

BIG SKY ELITE

GREEN MOUNTAIN RED ANGUS • C-T RED ANGUS
FEDDES RED ANGUS • KLOMPIEN RED ANGUS

Female Sale

Wednesday,

December 6, 2017

Offering:

Lunch at noon • Sale at 1 p.m. MST
Green Mountain Red Angus • Logan, MT

Montana's Premier Maternal Genetics
167 Registered Sale Lots
Bred Females • Donors • Genetic Opportunities

Performance-Minded Cattle • Balanced EPDs • Outstanding Dispositions • Great Mothers

Big Sky Elite
Female Sale will be
broadcast live on:

DVAuction



Bob & Julie Morton
2435 Logan Trident Road
Three Forks, MT 59752
406-285-6773
www.gmracattle.com



Chuck, Carol & Jake Feddes
2610 Churchill Road
Manhattan, MT 59741
406-581-8826 • 406-581-8157
www.feddesredangus.com



Craig & Taryn DeBoer
4740 Churchill Road
Manhattan, MT 59741
406-282-9029
www.ctredangus.com



Dave & Kay Klompier
8129 Amsterdam Road
Manhattan, MT 59741
406-581-4043
www.klompierredangus.com

DVAuction

www.dvauction.com

Watch & Bid online for FREE!

Can't make the sale?

Let DVAuction bring the sale to you!

Busy during the sale?

Let DVAuction represent your bid!

Visit www.dvauction.com and Register!

It's as easy as 1, 2, 3...

1. Create an account at www.dvauction.com under the "create new account" tab
2. Apply for bidding by clicking "apply for bidding" in the upper left corner of your screen, at least 24 hours prior to the auction
3. Tune into the sale and make your purchases!

**For General Questions Please Contact Our Office:
(402) 316-5460 or support@dvauction.com**

***High Speed Internet Access Required**

ASSOCIATION REPRESENTATIVES:

Tom Brink, CEO RAAA
Bob Morton, President RAAA
Kevin Miller, First Vice President RAAA
Francis Koenig, President..... Montana Red Angus Assn.
Kara Herbst, Vice President..... Montana Red Angus Assn.
Chris Pierce, Sec./Treas..... Montana Red Angus Assn.

LIVESTOCK INSURANCE:

Tom Holland, PayneWest..... 800-497-1012

ACCOMMODATIONS:

Broken Spur, Three Forks..... 1-888-354-3048
Fort Three Forks Motel, Three Forks..... 1-800-477-5690
Super 8, Belgrade..... 1-800-800-8000
Holiday Inn Express, Belgrade..... 1-800-542-6791
Sacajawea Hotel, Three Forks..... 406-285-6515

Bob's Cell 406-580-0348
Chuck's Cell 406-581-8826
Craig's Cell 406-570-3304
Dave's Cell 406-581-4043

SALE REPRESENTATIVES:


Kyle Gilchrist, Auctioneer 641-919-1077
John Goggins
Western Ag Reporter..... 406-698-4159
Devin Murnin
Western Livestock Journal 406-696-1502
Jeff Thomas
Prairie Star 406-581-8859
Scott Dirk
Tri-State Livestock News 605-380-6024
Clint Berry
Superior Livestock 417-844-1009

CATTLE SELL IN CATALOG ORDER

*View the catalog online at: **www.redcows.net**
or contact us for your catalog today!!*



Gilchrist Auction Co.
Kyle Gilchrist: 641/919-1077
14075 120th St. • Douds, IA 52551
redcowseller@yahoo.com



Catalog and Advertising by Cow Camp Promotions

View video of all sale lots at www.dvauction.com or at any of the breeders' websites.

TERMS AND CONDITIONS

1. The terms of the sale are cash unless prior arrangements have been made.
2. Each animal will be sold to the highest bidder. The person in charge will settle any disputes as to bids, and his decision on such matters shall be final.
3. Any announcement from the seller on sale day will take precedence over printed material.
4. Health certificates will be furnished for shipment anywhere in the United States.
5. Each animal becomes buyer's risk as soon as sold; but it shall be the obligation of the seller to see that animals are fed and cared for, free of charge to purchaser, until loaded for shipment or until the expiration of December 20th of the current year.
6. All claims for adjustment for bred females must be made before May 1st of the following year. All claims for adjustment for heifer calves must be made by September 1st of the following year.
7. Everyone attending this sale does so at their own risk. Owners, clerks or other helpers do not assume responsibility, legal or otherwise, for damages of any kind.
8. Delivery costs and scheduling shall be the sole responsibility of the buyer.
9. A certificate of registry and transfer shall be furnished for each registered bred female sold at a final bid price of \$1,200 or higher. A certificate of registry and transfer shall be furnished for each registered heifer calf sold at a final bid price of \$900 or higher. If final bid price is less than either of these amounts the cattle will be considered commercial. Certificates of registry may be purchased for the difference.
10. The above terms and conditions shall constitute a contract between the buyer and seller of each animal sold.

**These cattle do sell in accordance with the Sale Terms and Conditions
set forth by the Red Angus Association of America.**

Achieve it!

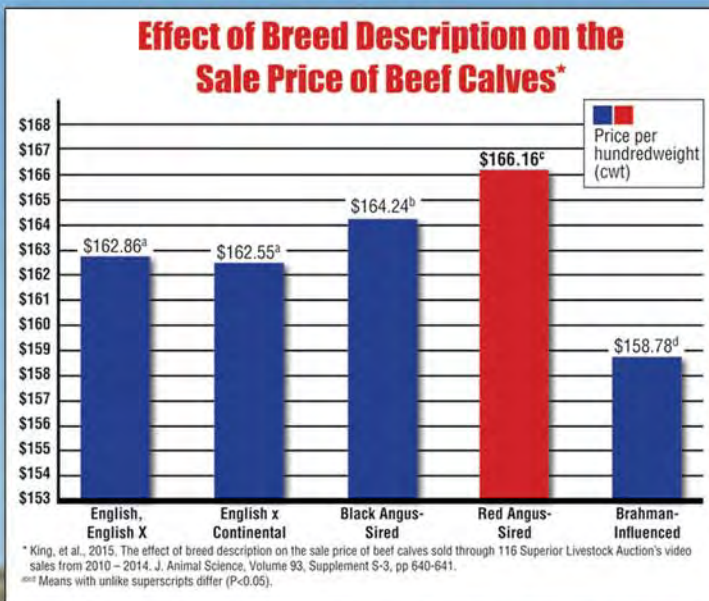
RETURN ON INVESTMENT

Red Angus genetics will improve your return on investment!



"For 10 to 15 years all the buyers ever talked about was black calves, and the black calves always brought more than everything else. Now I can honestly say that good Red Angus calves outsell the black calves and I know the Red Angus bred heifers will outsell black Angus bred heifers of equal quality every day."

– Jim Davis, Superior Livestock Auction



Independent research shows Red Angus-sired calves sold for a higher price than all other breed groups. Red Angus bulls make a positive difference in your breeding program's bottom line.

Invest in your future today!

Red Angus Marketing Programs

- Free-Enrollment Tag Programs
- Dedicated Feeder Calf Sales
- Free Marketing Assistance from RAAA Staff
- Red Angus Grids
 - Tyson's Choice+ Premium Grid
 - Greater Omaha's G.O. Red Grid

Contact the Association today for more information on achieving the most return on your Red Angus investment.

Ranch Tested. Rancher Trusted.

Red Angus

RedAngus.org
(940) 387-3502



BIG SKY ELITE

GREEN MOUNTAIN RED ANGUS • C-T RED ANGUS
FEDDES RED ANGUS • KLOMPIEN RED ANGUS

Female Sale

Welcome to the Big Sky Elite Female Sale!

As the 2017 auction season winds down, it has been a tremendous year for Red Angus cattle. Within the beef industry the Red Angus breed has experienced unprecedented breed expansion. From increases in cattle registrations and memberships, to the ultimate demand for commercial Red Angus females, there is no breed that is gaining interest more than Red Angus. As a member of the RAAA Strategic Planning committee, critical mass in increased cattle numbers within the beef industry has been at the forefront of our agenda. I believe in 2016 and 2017 we are seeing an explosion in Red Angus genetics in commercial cow herds across the nation. As cattlemen experience the docility and maternal traits of the Red Angus female, I think we have only seen the beginning of what's to come.

As we move forward into 2018, the Big Sky Elite offering allows you to get poised and ready to be part of the "Red Revolution." This sale offers cattle from four of the breed-leading herds in the United States. In a few short months, these cows and heifers will be delivering the next generation of Red Angus superstars. Genetics from the Klompfen, Feddes, C-T and Green Mountain programs can create sale toppers, showing champions and bull test winners, as well as some of the most productive registered females in the business. If you want to invest in some superior Red Angus genetics, make plans now to participate in this auction.

If I can assist you in any way regarding your selections, please feel free to contact me at 641-919-1077. My plans are to be in Three Forks Monday, Dec. 4 through sale day, I will be available to look at the cattle and give you my unbiased opinion. If you want me to handle your bids, I will do so with the strictest of confidence. I look forward to seeing you in Three Forks on December 6.

Best Regards,
Kyle Gilchrist



Jim, Bob, Julie and Tom Morton



*J.D., Sutton, Jeremy
& Laney Dunbar*



*Traig, Craig, Taryn,
Trac & Cayl DeBoer*



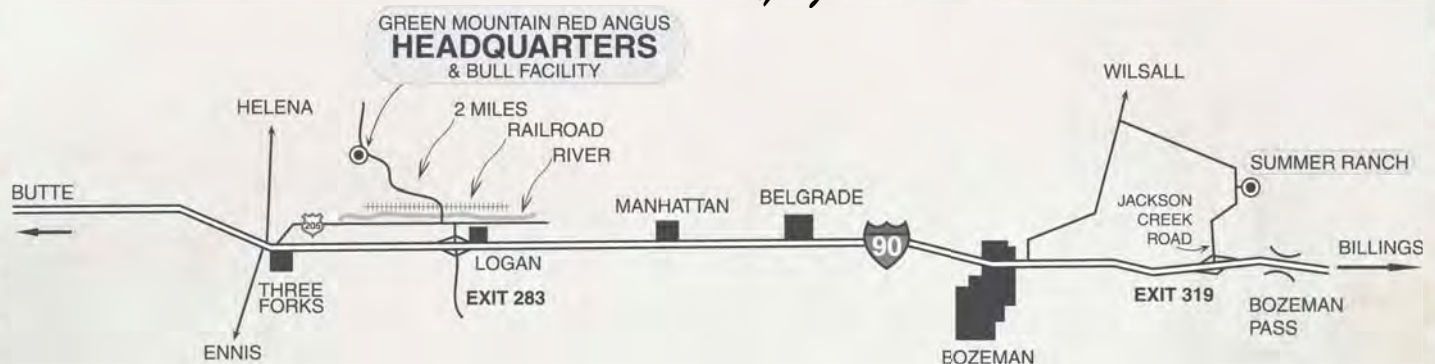
*Paul & Kara
Herbst; Renee,
Brad & Cole
Kamerman,
Dave & Kay
Klompfen*



Chuck and Carol Feddes Family



*Jake & Alyssa
Feddes and Ella*



Get off 1-90 at the Logan Exit, #283. Go north and take a left on the frontage road. Proceed west toward Three Forks, about 1/2 mile. Take a right onto Logan Trident Road, heading north. The road immediately crosses the Gallatin River and the railroad tracks, as shown on the map. Green Mountain Red Angus is 2 miles from the railroad tracks. Watch for the large Green Mountain Red Angus sign.

Elite Opportunity

BIG SKY ELITE
Female Sale



RED RIGHT. NOW.

The Red Angus female is the rancher favorite for replacements that deliver real profitability.

An independent university study compared six years of Superior Livestock Auction data, revealing Red Angus-sired heifers commanded from \$5 to \$9/cwt. more than females of all other breed types.

Learn more about the value of Red Angus-sired replacement females at redangus.org.

Ranch Tested. Rancher Trusted.

Red Angus

KLOMPIEN RED ANGUS

Breeding the Best — Cutting the Rest



C-T RED ANGUS



Lot 1

DONOR



GMRA ANGIE ROSE 944

Birth Date:
1/16/09

Reg. #
1322877

Category:
100% 1A

MESSMER JOSHUA 019P
MESSMER PACKER S008
MESSMER MILLIE 124P

GLACIER CHATEAU 744
GMRA ANGIE ROSE 533
GMRA ANGIE ROSE 171

BECKTON JULIAN GG 8571
MESSMER PANDORA M186
VGW TOP PICK 130
MESSMER MILLIE 9416
LMAN KING ROB 8621
GLACIER REBALA
NSF SPECIAL DELIVERY
GMRA ANGIE ROSE 951

HB	GM	CED	BW	WW	YW	M	ME	HPG	CEM	ST	MARB	YG	CW	REA	FAT
135	50	7	-1.6	68	111	33	9	11	7	13	0.19	-0.04	34	0.49	0.01

Bred to: **LOOSLI MANHATTAN 463 (#1714294)**

Due Date: **3/24/18**

Donor cow — MPPA 115. Angie Rose is a powerful, powerful cow! Angie Rose 944 has 11 traits expressed in the top 1/3 of the Red Angus breed. Her weaning ratio on natural calves is 116 and the yearling ratio on same calves is 113. She averages 14 #1 embryos per flush. She is the dam of C-T DKK Duke 1100 who sold to Rust Mountain in 2012. ET daughter sells as Lot 9.



EMBRYO PACKAGE

Selling 3 Embryos, guarantee 1 pregnancy.

ET Calf: **GMRA ANGIE ROSE 944 (#1322877) X**
BROWN JYJ REDEMPTION Y1334 (#1441805)

Projected EPDs:

HB	GM	CED	BW	WW	YW	M	ME	HPG	CEM	ST	MARB	YG	CW	REA	FAT
		12	-3.3	67	114	31	5	11	8	15	0.49	0.01	33	0.26	0.00

Cattle sell in catalog order.



FEDDES RED ANGUS

Featuring genetics on every 2008 female including elite donor dams and embryo packages.



Lot 2

DONOR



FEDDES BLOCKANA 9130

Birth Date:
1/31/09

Reg. #
1323141

Category:
100% 1A

BIEBER MAKE MIMI 7249
FEDDES BIG SKY R9
FEDDES LAKINA 310

SUNR GRAND CHEROKEE 909N
FEDDES BLOCKANA 7178
FEDDES BLOCKANA 172

BJR MAKE MY DAY 981
BIEBER SIRENA 6708
LCHMN GRANDCANYON 1244G
FEDDES LAKINA 954
BFCK CHEROKEE CNYN 4912
SUNR GRAND TILLY 006
CFDL REBELLAS ROBINHOOD
FEDDES BLOCKANA 899

HB	GM	CED	BW	WW	YW	M	ME	HPG	CEM	ST	MARB	YG	CW	REA	FAT
90	51	5	-3	61	85	26	3	18	3	7	0.73	-0.12	16	0.39	-0.01

OPEN – READY TO FLUSH

DONOR COW! We have flushed 9130 several years and then bred her to raise her own calf each year. We have five daughters in the herd and six heifers in our replacement pen. She still had nine traits in the top 31% of the breed. She is selling open and ready to flush. MPPA 102.



Feddes Sleek 806

DONOR



5L Advantage 3267-221Y



EMBRYO PACKAGE

Selling 3 Embryos, guarantee 1 pregnancy.

BUF CRK THE RIGHT KIND U199
5L ADVANTAGE 3267-221Y
5L ADINA 195-3267

BIEBER ROMERO 9136
FEDDES SLEEK 806
FEDDES SLEEK 2S

BUF CRK LANCER R017
BUF CRK SHOSHONE R353
5L TRADITION 203-6145
5L ADINA 2113-195
BUF CRK ROMEO L081
BIEBER MELLSSIE 8337
BIEBER MAKE MIMI 7249
FEDDES SLEEK 446

Projected EPDs:

HB	GM	CED	BW	WW	YW	M	ME	HPG	CEM	ST	MARB	YG	CW	REA	FAT
		12	-3.2	69	105	21	-2	10	7	13	0.54	0.09	28	0.09	0.02

5L ADVANTAGE 3267-221Y (# 1450210) x FEDDES SLEEK 806 (#1235063)

806 has done a great job at Feddes Red Angus. Her first calf is Oscar X28 at ABS. In 2017 she had our two top sellers – Feddes Liberty D210, who sold to Select Sires, and Feddes Patriot D207 who sold to Dave & Linda Geib. She has three daughters in the herd and four daughters in the replacement pen. 5L Advantage 221Y is a moderate-framed performance sire with excellent feet and legs, and is siring really good daughters.

C-T RED ANGUS



We are again selling all of our 9-year-old (coming 10-year-old) females.
This year that includes one of our most elite donor cows.



Lot 4



C-T LINSEY 0815

Birth Date:
1/18/08

Reg. #
1235669

Category:
100% 1A

BJR MAKE MY DAY 981
BIEBER MAKE MIMI 7249
BIEBER SIRENA 6708

BJR EASY RIDER 781
BJR TOW KANA 117-710

BIEBER IMPACT 4399
BIEBER MIMI 4227

LCHMN GRANDCANYON 1244G

BUF CRK CHF 824-1658
KRN REBA'S ROBIN

S. R. GRAND LINSEY
S.R. ROBS LINSEY

S.R. KING ROB
S.R. FORTUNE 252

HB	GM	CED	BW	WW	YW	M	ME	HPG	CEM	ST	MARB	YG	CW	REA	FAT
89	49	5	-1.1	58	89	28	3	9	1	10	0.35	0.04	21	0.23	0.02

Bred to: **C-T EXCEPTIONAL 5015 (#3471517)**

Due Date: 2/20/18

Donor cow quality! C-T Linsey 0815 has been a surefire Make Mimi daughter producing top herd bulls like C-T New Vision 5077. You can't go wrong with a maternal pedigree of Make Mimi x Grand Canyon. She has a beautiful phenotype and great feet and udder structure. She has solid EPDs with MILK in top 8% and REA in top 24%. She will make a great cross with our exciting young herd sire, C-T Exceptional 5015. MPPA: 103.4



GREEN MOUNTAIN RED ANGUS



Lot 5



GMRA OPHELIA 279

Birth Date:
1/30/12

Reg. #
1525382

Category:
100% 1A

LJC LANCER 806
LJC MISSION STATEMENT P27
LJC HANNAH 106

BECKTON LANCER T A664
LJC HB LIZZIE 606

HOLDEN HI HO 753
LJC KJ JAMIE 516

GMRA LARAMIE 5110

LCC CHEYENNE B221L
GMRA LAKOTA 341

GMRA OPHELIA 840
GMRA OPHELIA 441

BIEBER MAKE MIMI 7249
GMRA OPHELIA 036

HB	GM	CED	BW	WW	YW	M	ME	HPG	CEM	ST	MARB	YG	CW	REA	FAT
123	52	4	-1.7	68	108	24	11	12	2	13	0.51	-0.09	32	0.44	-0.01

Bred to: **FEDDES BOBCAT A230 (#1607674)**

Due Date: 3/27/18

Here is one you don't want to miss! Ophelia 279 is just stepping into her prime and she is all about performance. She features an MPPA of 107.3 on four calves with an average WR of 110 and an average YR of 112. Her pedigree is stacked with maternal power, showcasing females with high-end MPPAs and progeny that have made their mark, including GMRA Cody 7228, who was an international sire for ABS. Ophelia 279 produced one of the feature bulls in our 2017 bull sale that sold to Northern Lites Ranch for \$8,500. She features a top-end EPD profile with all but three of her numbers in the top 39% of the breed or higher. What a powerful genetic opportunity to go to work in your herd!





Lot 6



FEDDES SLEEK 8116

Birth Date: 2/17/08

Reg. # 1235165

Category: 100% 1A

BIEBER MAKE MIMI 7249
FEDDES BIG SKY R9
FEDDES LAKINA 310

SUNR GRAND CHEROKEE 909N

FEDDES SLEEK R33
FEDDES SLEEK 013

BJR MAKE MY DAY 981
BIEBER SIRENA 6708
LCHMN GRANDCANYON 1244G
FEDDES LAKINA 954
BFCK CHEROKEE CNYN 4912
SUNR GRAND TILLY 006
GLACIER LOGAN 210
FEDDES SLEEK 830

HB	GM	CED	BW	WW	YW	M	ME	HPG	CEM	ST	MARB	YG	CW	REA	FAT
99	51	3	-3.1	65	95	31	3	15	-1	10	0.57	-0.08	21	0.27	-0.02

Bred to: PIE ONE OF A KIND 510 (\$3503311)

Due Date: 3/31/18

DONOR COW! 8116's daughter (D99) just won the futurity at the 2017 NILE and was the high selling lot in the sale! We have four daughters in the herd and embryos in the tank. Her 2017 bull calf has a 113 WR, and went on test Oct. 4 at 825#. MPPA 107 on eight natural calves.

Pregnant Recip



FEDDES RAINBOW 9226

Birth Date: 3/14/09

Reg. # 1323160

Category: 100% 1A

ET Calf: 3SCC DOMAIN A163 (#1619642) X
FEDDES SLEEK 8116 (#1235165)

Due Date: 7/28/18

BECKTON DOMINOR T122 Z1
3SCC DOMAIN A163
3SCC EUCLA X723

BECKTON DOMINOR Z1 R610
BKT LARKABEL R038 WA
BASIN HOBO 054
BSKF EUCLA U278
BIEBER MAKE MIMI 7249
FEDDES LAKINA 310
SUNR GRAND CHEROKEE 909N
FEDDES SLEEK 013

FEDDES BIG SKY R9
FEDDES SLEEK 8116
FEDDES SLEEK R33

Projected EPDs:

HB	GM	CED	BW	WW	YW	M	ME	HPG	CEM	ST	MARB	YG	CW	REA	FAT
		8	-3.0	62	101	30	0	17	3	14	0.74	0.07	26	0.29	0.04

9226 is a pregnant recip. Lot 6 (8116) is the donor dam of this pregnancy. Domain A163 is a Genex bull that is doing a great job at Koester Red Angus, Leland Red Angus and Sonstegard Cattle Co. He is extremely balanced with a top 1% Stayability which is the most important trait for profit.



FEDDES MISCHIEF Y1

Birth Date: 1/16/11

Reg. # 1423147

Category: 100% 1A

ET Calf: PIE ONE OF A KIND 352 (#1651711) X
FEDDES BLOCKANA 863 (#1235194)

Due Date: 7/25/18

BUF CRK THE RIGHT KIND U199
PIE ONE OF A KIND 352
PIE FAYETTE 1160

FEDDES BIG SKY R9
FEDDES BLOCKANA 863
FED'S BLOCKANA 4225

BUF CRK LANCER R017
BUF CRK SHOSHONE R353
LSF SAND HILLS 9008W
PIE FAYETTE 782
BIEBER MAKE MIMI 7249
FEDDES LAKINA 310
BUF CRK HOBO 1961
BJR BLOCKANA 502-5185

Projected EPDs:

HB	GM	CED	BW	WW	YW	M	ME	HPG	CEM	ST	MARB	YG	CW	REA	FAT
		7	-0.7	78	123	22	4	16	5	11	0.18	0.02	42	0.20	-0.02

Y1 is a pregnant recip. 863 is a donor cow we decided not to sell this year, but here is an opportunity to buy key genetics. 863 is a moderate-framed Big Sky daughter with tons of girth and guts. If you are chasing EPDs, she is probably not for you, but if you want to add extra cow power, take a look. PIE One of a Kind 352 has done a great job for many around the country. His progeny at Feddes Red Angus are really good. Add \$250 to the purchase price if buyer would like recip cow transferred.



Lot 9



DKK ANGIE ROSE 6054

Birth Date: 1/29/16

Reg. # 3533248

Category: 100% 1A

BECKTON NEBULA P P707
BROWN JYJ REDEMPTION Y1334
JYJ MS JOLENE W16

MESSMER PACKER S008
GMRA ANGIE ROSE 944
GMRA ANGIE ROSE 533

BECKTON NEBULA M045
BECKTON LANA M809 EP
LJC MISSION STATEMENT P27
HXC JOLENE R548
MESSMER JOSHUA 019P
MESSMER MILLIE 124P
GLACIER CHATEAU 744
GMRA ANGIE ROSE 171

HB	GM	CED	BW	WW	YW	M	ME	HPG	CEM	ST	MARB	YG	CW	REA	FAT
149	53	11	-3.4	66	113	31	2	11	7	13	0.57	0.02	33	0.28	0

Bred to: FRITZ AMBUSH 12D (#3543988)

Due Date: 2/25/18

The proof is in the pudding ... Here's an exceptional opportunity to own an ET daughter from the great Angie Rose 944 cow. We got three heifers out of this same mating, so decided to offer one to you. She's fancy, long, deep and thick. She's posting 12 EPDs in the top 25% of the breed. Her mama owns a 115 MPPA. Dam sells as Lot 1. What more could you ask for?



Lot 10



DKK AUBURN 6110

Birth Date:
2/8/16

Reg. #
3533300

Category:
100% 1A

BECKTON NEBULA P P707
BROWN JYJ REDEMPTION Y1334
JYJ MS JOLENE W16

RED FINE LINE MULBERRY 26P
DKK AUBURN 415
DKK AUBURN P35

BECKTON NEBULA M045
BECKTON LANA M809 EP
LJC MISSION STATEMENT P27
HXC JOLENE R548
RED COMPASS MULBERRY 449M
RED DUS FAYETTE 8G
LCHMN GRANDCANYON 1244G
DKK AUBURN 607

HB	GM	CED	BW	WW	YW	M	ME	HPG	CEM	ST	MARB	YG	CW	REA	FAT
158	52	8	-2.3	64	108	25	-1	14	9	14	0.56	0.09	31	0.04	0.01

Bred to: FRITZ AMBUSH 12D (#3543988)

Due Date: 3/12/18

Pedigree, Phenotype, Performance – in a word, PROGRESS. The Auburn cow family is well-known for highly capacious, good-natured, excellent-footed females with perfect udders. Expect no less from this beauty. She sports 13 EPDs in the top one-third of the breed; with HB in the top 4% and Stay in the top 6%. Individually, she claims a 104 WR.



Lot 11



CK MELODY 6188

Birth Date:
4/17/16

Reg. #
3533183

Category:
100% 1A

BIEBER H HUGHES W109
LOOSLI MANHATTAN 463
LOOSLI TETON 564

RED NORTHLINE FAT TONY 605U
DKK MELODY 129
DKK MELODY 9043

BASIN HOBO 0545
BASIN ROSE 06T0
BFCK CHEROKEE CNYN 4912
MISS LL DIVIDE 703
RED SVR GANGSTER 14S
RED NORTHLINE RUBY 0305N
4L SUPER VISION R2292
DKK MELODY P42

HB	GM	CED	BW	WW	YW	M	ME	HPG	CEM	ST	MARB	YG	CW	REA	FAT
104	48	1	0.9	76	106	23	-2	13	4	11	0.43	0.03	33	0.33	0.01

Bred to: FRITZ AMBUSH 12D (#3543988)

Due Date: 4/16/18

Don't miss this powerful bred heifer! She is the definition of a curve bender! She came into this world at 82#s and then has a Weaning Ratio of a 128 and a Yearling Ratio of 112 – she developed into this powerhouse on her mother with no extra feed. That's not all – she has a low ME, strong HPG, and good carcass numbers. Her dam is one of our favorites – extremely deep ribbed, big hiped, nice udder, and a wonderful temperament.



Lot 12



C-T MISS PAN 6036

Birth Date:
1/27/16

Reg. #
3535268

Category:
100% 1A

BECKTON NEBULA P P707
BROWN JYJ REDEMPTION Y1334
JYJ MS JOLENE W16

C-T DKK DUKE 1100
C-T MISS PAN 3067
C-T MISS PAN 0877

BECKTON NEBULA M045
BECKTON LANA M809 EP
LJC MISSION STATEMENT P27
HXC JOLENE R548
FRITZ JUSTICE 8013
GMRA ANGIE ROSE 944
4L 429 CANYON 37S
C-T MISS PAN 0536

HB	GM	CED	BW	WW	YW	M	ME	HPG	CEM	ST	MARB	YG	CW	REA	FAT
135	52	9	-1.6	74	122	25	3	10	7	12	0.62	0.05	40	0.34	0.02

Bred to: FEDDES LIBERTY D210 (#3539663)

Due Date: 1/20/18

This powerful Miss Pan heifer will catch your eye in the pen. She has a beautiful phenotype with cherry red color, big performance with 104 WR and 107 YR. Top 7% WW, top 3% YW, 11 traits in the top 25% for EPDs. Don't miss this Miss Pan heifer, she will be a great one! Bred to this new Select Sire's herd sire.



Lot 13



C-T MATTIE 6021

Birth Date:
1/24/16

Reg. #
3535307

Category:
100% 1A

BUF CRK THE RIGHT KIND U199
5L INDEPENDENCE 560-298Y
5L BLACK ADINA 525-560

BUF CRK LANCER R017
BUF CRK SHOSHONE R353

BROWN JYJ REDEMPTION Y1334
C-T MATTIE 4003
C-T MATTIE 2010

TC STOCKMAN 365
5L ADINA 293-525
BECKTON NEBULA P P707
JYJ MS JOLENE W16
MESSMER PACKER S008
C-T MATTIE 0525

HB	GM	CED	BW	WW	YW	M	ME	HPG	CEM	ST	MARB	YG	CW	REA	FAT
165	54	13	-4.5	62	109	22	-1	12	9	13	0.74	-0.04	29	0.24	-0.02

Bred to: **FEDDES SAGA C299 (#3469550)**

Due Date: 2/25/18

Dark cherry red Mattie heifer with a unique Independence x Redemption pedigree. Big time performance with 103 YR, YW to 14%, HB top 3%, GM top 1%, CED top 4%. This will be a female to keep and eye on with a pedigree and data like this.



Lot 14



C-T MISS PAN 6078

Birth Date:
2/7/16

Reg. #
3535227

Category:
100% 1A

BECKTON NEBULA P P707
BROWN JYJ REDEMPTION Y1334
JYJ MS JOLENE W16

BECKTON NEBULA M045
BECKTON LANA M809 EP
LJC MISSION STATEMENT P27
HXC JOLENE R548

5L NORSEMAN KING 2291
C-T MISS PAN 1044
C-T MISS PAN 0627

VGW KING OF THE WEST
NORSEMAN 1312 PJM
BIEBER MAKE MIMI 7249
CTDB MISS PAN 011

HB	GM	CED	BW	WW	YW	M	ME	HPG	CEM	ST	MARB	YG	CW	REA	FAT
130	53	11	-2.1	62	110	23	2	10	3	12	0.59	-0.01	33	0.24	-0.01

Bred to: **FEDDES EPIC C401 (#1742994)**

Due Date: 4/2/18

Powerful Redemption heifer with style and extra depth of rib. Solid EPDs with HB top 17%, GM top 6%, CED top 11%. 6078 stems from one of our most productive cow families (Miss Pan). Dam's MPPA 102.4. She will cross well with the exciting Epic son.



Lot 15



GMRA OPHELIA 629D

Birth Date:
1/12/16

Reg. #
3538286

Category:
100% 1A

5L ADVANTAGE 3267-221Y
5L TOP FLIGHT 3010-491A
5L OSCE 2948-3010

BUF CRK THE RIGHT KIND U199
5L ADINA 195-3267

HXC CONQUEST 4405P
GMRA OPHELIA 068
GMRA OPHELIA 840

5L DOUBLE BLAZE 1134-8576
5L OCSE 233-2948
BECKTON JULIAN GG B571
HXC ELLIE MAY MA638
GMRA LARAMIE 5110
GMRA OPHELIA 441

HB	GM	CED	BW	WW	YW	M	ME	HPG	CEM	ST	MARB	YG	CW	REA	FAT
149	51	14	-6.9	54	78	25	-1	9	4	14	0.53	0.04	6	0.26	0.06

Bred to: **FEDDES BRUNSWICK D202 (#3539689)**

Due Date: 3/1/18

She is good from any angle! What a great representation of the Top Flight daughters just coming into production at GMRA. She hit the ground at a nice low 65# and turned in a 102 WR. She is out of a dam with an MPPA of 101.6, who was also the dam of GMRA Enterprise 2227, featured as Lot 2 in our 2013 bull sale and selling to Big Sky Red Angus. Going further back in the pedigree you find generations of performance with females posting MPPAs over 100, including the dam of GMRA Cody 7228, who was an international sire for ABS. A breed-leading set of numbers round out a very complete package. She has over half in the top 35% of the breed or higher, including a BW EPD in the top 1%.





Lot 16



GMRA NEXA 648

Birth Date:
1/18/16

Reg. #
3538466

Category:
100% 1A

5L ADVANTAGE 3267-221Y
5L TOP FLIGHT 3010-491A
5L OSCE 2948-3010

BROWN VACATION H7106
GMRA NEXA 845
GMRA NEXA 004

BUF CRK THE RIGHT KIND U199
5L ADINA 195-3267
5L DOUBLE BLAZE 1134-8576
5L OCSE 233-2948
BECKTON JULIAN GG B571
LCHMN FLOWER C1161
LCHMN NO EQUAL 1174D
GMRA NEXA 827

HB	GM	CED	BW	WW	YW	M	ME	HPG	CEM	ST	MARB	YG	CW	REA	FAT
147	47	8	-0.3	67	96	21	3	13	5	15	0.05	-0.04	26	0.33	0

Bred to: **FEDDES BRUNSWICK D202 (#3539689)**

Due Date: 3/4/18

In this picture she's quartering away a bit so you don't get to see the length, but it's there, combined with that fantastic capacity and depth. She is an absolute powerhouse, from phenotype to personal performance to pedigree. She posted a personal WR of 110 and a YR of 106. Her pedigree features highly maternal, productive females with MPPAs from 100.8 all the way up to 107.7, going back 45 years! All of this is combined with an EPD profile featuring 75% of her numbers in the top half of the breed.



Lot 17



FEDDES JESSA A31-D53

Birth Date:
2/3/16

Reg. #
3539789

Category:
100% 1A

BECKTON EPIC R397 K
LSF SAGA 1040Y
LSF MINOLA T7172 W9041

LOOSLI RIGHT KIND 107
FEDDES JESSA Y68 A31
FEDDES JESSA Y68

BECKTON EPIC K F075
BECKTON KIT F468 JL
FEDDES BIG SKY R9
LSF MINOLA K1279 T7172
BUF CRK THE RIGHT KIND U199
MISS LL DESIGN 949
C-T BIG CHIEF 0934
LARSON JESSA ILKA 717-373

HB	GM	CED	BW	WW	YW	M	ME	HPG	CEM	ST	MARB	YG	CW	REA	FAT
140	51	7	-3.6	65	104	25	-2	17	4	12	0.32	0	27	0.34	0.02

Bred to: **FEDDES PATRIOT D207 (#3539846)**

Due Date: 1/20/18

WOW! What a heifer! D53 is extremely balanced on paper as well as to the eyeball of discriminating cowmen and women. She started with a 71# BW and quickly grew to a 110 WR & 107 YR. She had nine traits in the top 1/3 of the breed, but still on a moderate frame with depth, thickness and a maternal look to her. Dam's MPPA 106.3, bred to our exciting new herd sire.



Lot 18



FEDDES BLOCKANA 8103-D15

Birth Date:
1/23/16

Reg. #
3539658

Category:
100% 1A

BECKTON EPIC R397 K
LSF SAGA 1040Y
LSF MINOLA T7172 W9041

FEDDES BIG SKY R9
FEDDES BLOCKANA 8103
FEDDES BLOCKANA R82

BECKTON EPIC K F075
BECKTON KIT F468 JL
FEDDES BIG SKY R9
LSF MINOLA K1279 T7172
BIEBER MAKE MIMI 7249
FEDDES LAKINA 310
GLACIER CHATEAU 744
FED'S BLOCKANA 4225

HB	GM	CED	BW	WW	YW	M	ME	HPG	CEM	ST	MARB	YG	CW	REA	FAT
119	51	7	-2.4	66	103	25	0	17	5	10	0.47	0.01	28	0.19	0

Bred to: **FEDDES LIBERTY D210 (#3539663)**

Due Date: 1/20/18

This Saga x Blockana x Big Sky is very attractive looking with a balanced EPD profile as well. The Blockana females have done a great job for us as well as many in the Red Angus breed.





5L Independence 560-298Y, sire



FEDDES FAYETTE B87-D38

Birth Date:
1/28/16

Reg. #
3539851

Category:
100% 1A

BUF CRK THE RIGHT KIND U199
5L INDEPENDENCE 560-298Y
5L BLACK ADINA 525-560

BUF CRK LANCER R017
BUF CRK SHOSHONE R353

C-T GRAND DATA 2085
FEDDES FAYETTE B87
C-T FAYETTE 0813

TC STOCKMAN 365
5L ADINA 293-525
C-T GRAND STATEMENT 1025
C-T LARKABA 0733
BIEBER MAKE MIMI 7249
C-T FAYETTE 0621

HB	GM	CED	BW	WW	YW	M	ME	HPG	CEM	ST	MARB	YG	CW	REA	FAT
152	53	9	-2	71	112	19	1	13	6	13	0.73	-0.03	34	0.26	-0.02

Bred to: **FEDDES LINCOLN Z79-B202 (#1687198)**

Due Date: 4/10/18

This is a soft-made Independence daughter with a beautiful profile. She had a 68# BW, 116 WA, 105 YR and a very balanced set of EPDs. She is backed by very solid maternal traits and longevity for several generations.



Lot 20



FEDDES BLOCKANA 8104-D71

Birth Date:
2/8/16

Reg. #
3539656

Category:
100% 1A

BUF CRK THE RIGHT KIND U199
5L INDEPENDENCE 560-298Y
5L BLACK ADINA 525-560

BUF CRK LANCER R017
BUF CRK SHOSHONE R353

FEDDES BIG SKY R9
FEDDES BLOCKANA 8104
FEDDES BLOCKANA R40

TC STOCKMAN 365
5L ADINA 293-525
BIEBER MAKE MIMI 7249
FEDDES LAKINA 310
BFCK CHEROKEE CNYN 4912
FEDDES BLOCKANA 392

HB	GM	CED	BW	WW	YW	M	ME	HPG	CEM	ST	MARB	YG	CW	REA	FAT
128	52	8	-3.7	66	101	23	1	15	3	11	0.57	-0.06	24	0.15	-0.03

Bred to: **FEDDES LINCOLN Z79-B202 (#1687198)**

Due Date: 2/15/18

This Independence x Big Sky is very balanced in her look and her numbers. Her dam sports a 102.5 MPPA and comes from a long line of fertile, deep-bodied Blockana cows with excellent feet, leg and udder structure. Dam sells as Lot 59.



DKK WIND SONG 5103

Birth Date:
2/12/15

Reg. #
3486395

Category:
100% 1A

LJC MISSION STATEMENT P27
SILVEIRAS MISSION NEXUS 1378
SILVEIRAS DAORV 8399

LJC LANCER 806
LJC HANNAH 106

C-T GRAND STATEMENT 1025
DKK WIND SONG 290
DKK WIND SONG R52

TROTTERS ROMEO 412
MOORE'S DAORV 5365
LJC MISSION STATEMENT P27
C-T MISS PAN 0760
BJR JR 107
DKK WIND SONG 615

HB	GM	CED	BW	WW	YW	M	ME	HPG	CEM	ST	MARB	YG	CW	REA	FAT
102	50	7	-3.5	59	90	23	7	11	4	10	0.44	-0.07	18	0.28	-0.01

Bred to: **PIE ONE OF A KIND 510 (#3503311)**

Due Date: 2/19/18

Take a look at this moderate-framed, capacious beauty. Stemming from the Wind Song cow family, I'll bet my boots you're going to like her. Lots of class, an outstanding disposition; excellent feet and udder quality with a balanced set of numbers. Mated to PIE ONE OF A KIND 510; I'll bet my spouse's boots that you're also going to like that baby that she is carrying.



DKK STARLETTE 557

Birth Date:
1/30/15

Reg. #
3486434

Category:
100% 1A

BECKTON JULIAN GG B571
HXC CONQUEST 4405P
HXC ELLIE MAY MA638

BKT JULIAN 7526 G
BKT MARTA 9A13 JL

MESSMER PACKER S008
DKK STARLETTE 370
DKK STARLETTE 8013

BFCK CHEROKEE CNYN 4912
HXC 529E
MESSMER JOSHUA 019P
MESSMER MILLIE 124P
DKK PRIORITY R07
DKK STARLETTE R70

HB	GM	CED	BW	WW	YW	M	ME	HPG	CEM	ST	MARB	YG	CW	REA	FAT
120	52	12	-5.5	62	97	21	3	11	3	10	0.48	0.02	19	0.2	0.01

Bred to: **DKK RUMBLE 6020 (#3533210) OR**

Due Date: 3/19/18

DKK BRONZE IMPRESSION 6150 (#3533333)

Great things come in moderate packages. This young lady is setting the bar high: with just one calf reported, she posts a BR of 89 then ramps that up to a 107 WR. Starlette 557 has eight EPDs in the top one-third of the breed. Calving just out of our window; we will pay for you to DNA her calf for sire confirmation.

Bred Females

BIG SKY ELITE Female Sale



Lot 23



DKK AUBURN 5148

Birth Date:
3/12/15

Reg. #
3486454

Category:
100% 1A

MESSMER PACKER S008
DKK POWER PACK 236
DKK MATTELINE 8014

LCHMN GRANDCANYON 1244G
DKK AUBURN P35
DKK AUBURN 607

MESSMER JOSHUA 019P
MESSMER MILLIE 124P

BECKTON LANCER F442 T
DKK MATTELINE N01

BUF CRK CHF 824-1658
KRN REBA'S ROBIN

BUF CRK HOBO 1961
CK RAMBLIN RUDY 213

HB	GM	CED	BW	WW	YW	M	ME	HPG	CEM	ST	MARB	YG	CW	REA	FAT
79	49	3	-0.3	65	104	21	7	9	3	9	0.32	0.06	32	0.18	0.01

Bred to: **DKK RED ROYAL 516 (#3486495)**

Due Date: **3/17/18**

Here's an opportunity to own a natural calf out of our elite donor. Auburn P35 is 13 years old, never had her feet trimmed, maintains a perfect udder, great disposition; she's a high-capacity mama cow who is bred back and expected to calve next February – then we plan to flush her again. This daughter, Auburn 5148, has her whole life ahead of her; she already seems to be following in her mama's footsteps – excellent feet, udder, disposition, performance and capacity.



Lot 24



GMRA LARKOBA 587

Birth Date:
2/4/15

Reg. #
3466971

Category:
100% 1A

LJC MISSION STATEMENT P27
GMRA STETSON 2240
GMRA VENICE 359

BROWN VACATION H7106
GMRA LARKOBA 761
GMRA LARKOBA 517

LJC LANCER 806
LJC HANNAH 106

BASIN HOBO 79E
GMRA VENICE 146

BECKTON JULIAN GG B571
LCHMN FLOWER C1161

GLACIER CHATEAU 744
GMRA LARKOBA 221

HB	GM	CED	BW	WW	YW	M	ME	HPG	CEM	ST	MARB	YG	CW	REA	FAT
168	49	9	-2.2	61	97	31	8	9	7	18	0.24	0	25	0.14	-0.01

Bred to: **FEDDES BOBCAT A230 (#1607674)**

Due Date: **3/19/18**

This young female should be at the top of your wish list! She is picture perfect with great depth and capacity, tons of length and a smooth muscle pattern. She carried her flesh all summer while producing the #1 heifer calf at weaning, taking a 71# birth weight all the way to a 122 WR. This gives her an MPPA of 108.8, following in the maternal powerhouse footsteps of her dam and granddam. Her dam posts a 103.4 on nine calves and her granddam posts a 108.9 on 10, and is currently in our ET program. When it comes to breeding time, the opportunities are endless. She has 13 numbers in the top half of the breed and nine of those are in the top third or higher. She showcases maternal strength all the way with a HB index, Milk and Stay in single digits.





Lot 25



GMRA KURUBA 5103

Birth Date:
2/10/15

Reg. #
3467007

Category:
100% 1A

GMRA EBV 266
GMRA MOUNTAIN 9287
GMRA VENICE 359

GMRA EBV 935
BJR ESTONIA 9S-1210
BASIN HOB0 79E
GMRA VENICE 146

MESSMER PACKER S008
LAUBACH KURUBA 1065
FISCHER KURUBA 1646

MESSMER JOSHUA 019P
MESSMER MILLIE 124P
LCHMN HEAVY CREAM 1083H
FISCHERS RED KURUBA 644

HB	GM	CED	BW	WW	YW	M	ME	HPG	CEM	ST	MARB	YG	CW	REA	FAT
140	50	8	-0.4	59	99	29	0	12	4	14	0.54	0.06	29	0.27	0.03

Bred to: **HXC DECLARATION 5504C (#3494198)**

Due Date: **3/4/18**

This is the type of female we breed for. Just look at the structure and phenotype! Her first calf hit the ground at 67# and he weaned off with a 101 WR. There's a lot of potential here with 12 numbers in the top 45% of the breed or higher, and nine of those above 24% with three in single digits. The calf on board projects 12 numbers in the top 30% or higher with single digit growth and carcass.



Lot 26



GMRA NEXA 515

Birth Date:
1/11/15

Reg. #
3467014

Category:
100% 1A

BIEBER ROUGH RIDER 10712
BIEBER ROOSEVELT W384
BIEBER SHEBA 9602

BASIN TREND SETTER 6074
BIEBER ADELLE 8958
C A FUTURE DIRECTION 5321
BIEBER SHEBA 5537

GMRA TRILOGY 0226
GMRA NEXA 203
GMRA NEXA 046

MESSMER PACKER S008
GMRA LAKOTA 625
HXC CONQUEST 4405P
GMRA NEXA 672

HB	GM	CED	BW	WW	YW	M	ME	HPG	CEM	ST	MARB	YG	CW	REA	FAT
114	50	4	2.5	72	108	15	-4	14	6	11	0.76	0.1	38	0.32	0.04

Bred to: **HXC DECLARATION 5504C (#3494198)**

Due Date: **3/17/18**

This young Roosevelt daughter will pass on her great length combined with a smooth, feminine muscle pattern. She has a knockout set of numbers with 10 in the top 28% of the breed. Growth numbers place her at the top of the game with a WW, YW and CW all in the top 10, while maintaining outstanding carcass with Marb in the top five and REA in the top 14.



Lot 27



GMRA LAKOTA 547

Birth Date:
1/21/15

Reg. #
3467041

Category:
100% 2

BIEBER ROUGH RIDER 10712
BIEBER ROOSEVELT W384
BIEBER SHEBA 9602

BASIN TREND SETTER 6074
BIEBER ADELLE 8958
C A FUTURE DIRECTION 5321
BIEBER SHEBA 5537

GMRA TRILOGY 0226
GMRA LAKOTA 293
GMRA LAKOTA 923W

MESSMER PACKER S008
GMRA LAKOTA 625
LJC MISSION STATEMENT P27
GMRA LAKOTA 735T

HB	GM	CED	BW	WW	YW	M	ME	HPG	CEM	ST	MARB	YG	CW	REA	FAT
92	47	-2	4.6	73	113	12	-1	14	4	11	0.37	0.15	44	0.16	0.03

Bred to: **GMRA STETSON 2240 (#1525314)**

Due Date: **3/25/18**

This Roosevelt daughter has an eye towards performance. Don't let that BW EPD scare you – her first calf was an 80# heifer that she weaned off with a 109 WR. She is a weaning and growth specialist with a WW and YW in the top 6% and a CW in the top 2%, all while keeping a ME in the top third and maintain a good HPG and Stay.





Lot 28



C-T MISS PAN 6033

Birth Date:
1/26/16

Reg. #
3535232

Category:
100% 1A

HXC CONQUEST 4405P
C-T GRAND DESIGN 3023
C-T VERDI 1142

DKK LEGACY 705
C-T MISS PAN 1090
C-T MISS PAN 0834

BECKTON JULIAN GG B571
HXC ELLIE MAY MA638
5L HOBBO DESIGN 273-7047
C-T VERDI 0502
BIEBER MAKE MIMI 7249
DKK HARMONY R36
5L NORSEMAN KING 2291
C-T MISS PAN 409

HB	GM	CED	BW	WW	YW	M	ME	HPG	CEM	ST	MARB	YG	CW	REA	FAT
132	52	9	-3.4	61	99	23	2	10	4	12	0.63	-0.02	24	0.2	0

Bred to: **FEDDES LIBERTY 210 (#3539663)**

Due Date: 1/20/18

Powerful bred heifer with extra length and style. Stemming from the legendary Miss Pan cow family. Impressive EPDs with six traits in the top 19%. Don't miss these Grand Design females.



Lot 29



C-T CHRIS 6051

Birth Date:
1/31/16

Reg. #
3535236

Category:
100% 1A

ANDRAS IN FOCUS B152
ANDRAS NEW DIRECTION R240
ANDRAS KURUBA B111

GLACIER CHATEAU 744
C-T CHRIS 1116
C-T CHRIS 426

MYTTY IN FOCUS
ANDRAS PINETA B91
MORGANS DIRECTION 111 9901
ANDRAS KURUBA B71
LMAN KING ROB 8621
GLACIER REBALA
FCC RAMBO 502
LARSON CRIS 926

HB	GM	CED	BW	WW	YW	M	ME	HPG	CEM	ST	MARB	YG	CW	REA	FAT
70	49	2	-1.5	49	78	25	-7	11	7	7	0.47	0.06	15	0.1	0.03

Bred to: **FEDDES EPIC C401 (#1742994)**

Due Date: 3/5/18

An extremely attractive New Direction heifer from one of our most-popular cow families (the Chris Cows). Milk top 16%, ME top 5%. If you like maternal, correct, nice uddered females, take a look at this heifer.



FEDDES LAKINA X113,
donor dam and dam of Lots 30, 31 and 79



FEDDES LAKINA X113-D66

Birth Date:
2/6/16

Reg. #
3539711

Category:
100% 1A

BJR MAKE MY DAY 981
BIEBER MAKE MIMI 7249
BIEBER SIRENA 6708

RED SIX MILE SAKIC 832S
FEDDES LAKINA X113
FEDDES LAKINA 310

BJR EASY RIDER 781
BJR TOW KANA 117-710
BIEBER IMPACT 4399
BIEBER MIMI 4227
RED SIX MILE AVIATOR 217P
RED SIX MILE SIERA 257P
LCHMN GRANDCANYON 1244G
FEDDES LAKINA 954

HB	GM	CED	BW	WW	YW	M	ME	HPG	CEM	ST	MARB	YG	CW	REA	FAT
134	49	6	-2.1	59	87	26	5	11	5	14	0.32	-0.07	19	0.21	-0.02

Bred to: **FEDDES LIBERTY D210 (#5359663)**

Due Date: 3/22/18

Mimi x Lakina cow family should make great cows. Her granddam is Feddes Lakina 310, Big Sky R9's mother. Her dam is X113 who is super fertile and sound footed with a near perfect udder. We have seven of these Mimi x 113 breed heifers, so we are letting two go in this sale. Full sister sells as Lot 79, dam sells as Lot 31.

Pregnant Recip



Feddes Brunswick D202, service sire



FEDDES LARKABA X54

Birth Date:
1/29/10

Reg. #
1368691

Category:
100% 1A

ET Calf: **FEDDES BRUNSWICK D202 (#3539689) X
FEDDES LAKINA X113 (#1368697)**

Due Date: 7/30/18

FEDDES SILVER BOW B226
FEDDES BRUNSWICK D202
FEDDES LARKABU X21

BROWN JYJ REDEMPTION Y1334
FEDDES LAKINA Y17

RED CROWFOOT OLE'S OSCAR
FEDDES LARKABU 827

RED SIX MILE SAKIC 832S
FEDDES LAKINA X113
FEDDES LAKINA 310

RED SIX MILE AVIATOR 217P
RED SIX MILE SIERA 257P

LCHMN GRANDCANYON 1244G
FEDDES LAKINA 954

Projected EPDs:

HB	GM	CED	BW	WW	YW	M	ME	HPG	CEM	ST	MARB	YG	CW	REA	FAT
		5	-1.4	67	103	28	3	14	8	11	0.58	-0.10	29	0.51	-0.01

X54 is a pregnant recip. X113 is a maternal sister to Big Sky R9. She is a moderate frame cow with tons of length, rib, a near-perfect udder, and stands on a great set of feet and legs. Brunswick D202 sold to Select Sires, Green Mountain Red Angus and Double D Red Angus in our 2017 Sale. He is extremely well balanced with eight traits in the top 10%.



Lot 32



FEDDES BLOCKANA Z63-D94

Birth Date:
2/21/16

Reg. #
3539733

Category:
100% 1A

BUF CRK THE RIGHT KIND U199
5L INDEPENDENCE 560-298Y
5L BLACK ADINA 525-560

BUF CRK LANCER R017
BUF CRK SHOSHONE R353

TC STOCKMAN 365
5L ADINA 293-525

FED FLIKK MULBERRY X648
FEDDES BLOCKANA Z63
FEDDES BLOCKANA 825

RED FINE LINE MULBERRY 26P
MEADO-WEST STELLA

5L NORSEMAN KING 2291
FEDDES BLOCKANA R62

HB	GM	CED	BW	WW	YW	M	ME	HPG	CEM	ST	MARB	YG	CW	REA	FAT
136	53	9	-3.2	65	110	24	0	19	7	10	0.63	-0.04	31	0.3	-0.01

Bred to: **FEDDES LINCOLN Z79-B202 (#1687198)**

Due Date: 3/22/18

This heifer covers all the bases really well: calving ease, growth, maternal and carcass. Excellent balance in her EPDs. Her granddam sells in this sale as a coming 10-year-old, Lot 68.



Lot 33



DKK OLIVIA 6083

Birth Date:
2/2/16

Reg. #
3533274

Category:
100% 1A

BROWN JYJ REDEMPTION Y1334
FEDDES RED PACK Y84 B217
FEDDES SLEEK Y84

BECKTON NEBULA P P707
JYJ MS JOLENE W16

MESSMER PACKER S008
FEDDES SLEEK 2S

HXC CONQUEST 4405P
DKK OLIVIA 457
DKK OLIVIA 8001

BECKTON JULIAN GG B571
HXC ELLIE MAY MA638

GLACIER CHATEAU 744
DKK OLIVIA 622

HB	GM	CED	BW	WW	YW	M	ME	HPG	CEM	ST	MARB	YG	CW	REA	FAT
132	52	11	-3	70	117	24	4	11	6	11	0.52	0.09	35	0.24	0.02

Bred to: **FRITZ AMBUSH 12D (#3543988)**

Due Date: 3/18/18

Classy with stats. This gorgeous heifer brings it all together as a package deal. She has 12 EPDs in the top 33% of the breed; with eight in the top 25%. Individually, she started out with a 61# BW – then packed it on to claim both weaning and yearling ratios of 104.



Lot 34



DKK BLOSSOM 6003

Birth Date:
1/12/16

Reg. #
3533197

Category:
100% 1A

BROWN JYJ REDEMPTION Y1334
DKK C-T REDEEM 402
BROWN MS ABIGRACE Z7908

HXC CONQUEST 4405P
SADR BLOSSOM 4159
SADR BLOSSOM 1201

BECKTON NEBULA P P707
JYJ MS JOLENE W16
LCS X2
BROWN MS ABIGRACE L7730
BECKTON JULIAN GG B571
HXC ELLIE MAY MA638
DKK ULTIMATE 9032
DKK BLOSSOM 9036

HB	GM	CED	BW	WW	YW	M	ME	HPG	CEM	ST	MARB	YG	CW	REA	FAT
121	52	11	-3.6	65	102	23	0	13	6	9	0.63	-0.04	25	0.19	-0.02

Bred to: FRITZ AMBUSH 12D (#3543988)

Due Date: 2/20/18

Long and Elegant. This gem claims 13 EPDs in the top one-third of the Red Angus breed – with nine of them being in the top 25%! She is most definitely among the elite with numbers, performance and carcass to burn.



Lot 35



DKK LAKME 6109

Birth Date:
2/8/16

Reg. #
3533299

Category:
100% 1A

BROWN JYJ REDEMPTION Y1334
FEDDES RED PACK Y84 B217
FEDDES SLEEK Y84

DKK DYNAMITE 285
DKK LAKME 498
DKK LAKME 2118

BECKTON NEBULA P P707
JYJ MS JOLENE W16
MESSMER PACKER S008
FEDDES SLEEK 2S
MESSMER PACKER S008
DKK DAZZLE M21
DKK PRIORITY R07
KCC LAKME S635

HB	GM	CED	BW	WW	YW	M	ME	HPG	CEM	ST	MARB	YG	CW	REA	FAT
109	51	3	-0.3	75	125	23	4	12	2	11	0.48	0.07	44	0.37	0.02

Bred to: FRITZ AMBUSH 12D (#3543988)

Due Date: 3/2/18

Impressive ... this attractive, deep-ribbed, powerful young lady sports eight EPDs in the top one-third of the breed. Did I say powerful? She is in the top 5% of the breed for weaning; top 2% for both yearling and carcass weight.



Lot 36



GMRA FIREFLY 609

Birth Date:
1/10/16

Reg. #
3538382

Category:
100% 1A

BECKTON NEBULA P P707
BROWN JYJ REDEMPTION Y1334
JYJ MS JOLENE W16

BIEBER GOLDBAR Y379
GMRA FIREFLY 431
GMRA FIREFLY 2101

BECKTON NEBULA M045
BECKTON LANA M809 EP
LJC MISSION STATEMENT P27
HXC JOLENE R548
LACY GOLD BAR 8123
BASIN PRIMROSE 2043
GMRA MAKE IT EASY 8226
GMRA FIREFLY 128

HB	GM	CED	BW	WW	YW	M	ME	HPG	CEM	ST	MARB	YG	CW	REA	FAT
150	53	11	-2.6	72	118	26	1	11	5	13	0.7	0.07	36	0.02	-0.01

Bred to: FEDDES BRUNSWICK D202 (#3539689)

Due Date: 3/24/18

Here is just an absolutely beautiful Redemption daughter. She is built right with great structure, tons of depth and capacity, finished out in that deep cherry-red coloring. Not only does she feature an outstanding phenotype, she has an absolute top-notch set of EPDs with 11 in the top 30% or higher. Over half of her numbers are in the top 13% or higher, including everything from maternal to growth to carcass.





Feddes Brunswick D202, service sire



GMRA DORY JIBA 682

Birth Date: 1/31/16

Reg. # 3538307

Category: 100% 1A

LJC MISSION STATEMENT P27
GMRA STETSON 2240
GMRA VENICE 359

LJC LANCER 806
LJC HANNAH 106

BASIN HOB0 79E
GMRA VENICE 146

VGW WARRIOR 969
SRR DORY JIBA 1161-663
SRR DORY JIBA 663-784

BECKTON WARRIOR R667 CL
VGW 400-FIREFLY 0449

LMAN KING ROB 8621
LARSON DORY JIBA 784-834

HB	GM	CED	BW	WW	YW	M	ME	HPG	CEM	ST	MARB	YG	CW	REA	FAT
128	51	4	1.5	73	128	26	4	11	6	13	0.3	0.06	49	0.37	0.01

Bred to: **FEDDES BRUNSWICK D202 (#3539689)**

Due Date: 3/12/18

This Stetson daughter is out of a highly productive Strawberry Ridge cow we purchased as a bred heifer at the 2012 NILE. Her dam has done a great job for us with an MPPA of 101.5 on five calves. Dory Jiba 682 has always turned in top-notch personal performance and comes with a super solid set of numbers. Over half of her EPDs are in the top 25% of the breed or higher, with WW in the top 8% and YW and CW in the top 1%.



Lot 38



C-T VERDI 6003

Birth Date: 1/12/16

Reg. # 3535309

Category: 100% 1A

BUF CRK THE RIGHT KIND U199
5L INDEPENDENCE 560-298Y
5L BLACK ADINA 525-560

BUF CRK LANCER R017
BUF CRK SHOSHONE R353

TC STOCKMAN 365
5L ADINA 293-525

HXC CONQUEST 4405P
C-T VERDI 4076
C-T VERDI 2004

BECKTON JULIAN GG B571
HXC ELLIE MAY MA638

C-T GRAND STATEMENT 1025
CTDB VERDI 04

HB	GM	CED	BW	WW	YW	M	ME	HPG	CEM	ST	MARB	YG	CW	REA	FAT
157	53	14	-5.8	55	88	23	-2	11	8	13	0.73	-0.06	14	0.12	-0.01

Bred to: **FEDDES EPIC C401 (#1742994)**

Due Date: 2/26/18

Don't miss this unique genetic match-up of Independence x Conquest from the maternal Verdi cow family. HB top 5%, GM top 5%, CED and BW top 2%. Dark cherry red color with mother cow written all over her.



Lot 39



C-T MISS PAN 6120

Birth Date: 2/24/16

Reg. # 3535317

Category: 100% 1A

HXC CONQUEST 4405P
C-T GRAND DESIGN 3023
C-T VERDI 1142

BECKTON JULIAN GG B571
HXC ELLIE MAY MA638

5L HOB0 DESIGN 273-7047
C-T VERDI 0502

BUF CRK BARNEY 3474
C-T MISS PAN 331
DKK MISS 401

BUF CRK BARON 2678
OLE SUNFLOWER 359 PB08

RCRA EXPEDITION 1989
CK'S MISS PAN 4053

HB	GM	CED	BW	WW	YW	M	ME	HPG	CEM	ST	MARB	YG	CW	REA	FAT
127	51	8	-2.9	60	97	24	2	10	6	12	0.52	0.02	24	0.04	-0.01

Bred to: **C-T RED ROCK 5033 (#3471552)**

Due Date: 1/20/18

Solid Miss Pan heifer with HB top 19%, GM top 21%. Balanced EPDs with moderate frame and stylish phenotype. Dam's MPPA 103.5. This will be an exciting cross with the powerful young Genex herd sire C-T Red Rock 5033.



Lot 40



FEDES TINA A17-D44

Birth Date:
1/30/16

Reg. #
3539758

Category:
100% 1A

FEDES CONQUEST Y34
FEDES CONRAD A208
FEDES LAKINA Y17

C-T GRAND STATEMENT 1025
FEDES TINA 19S A17
FEDES TINA 19S

HXC CONQUEST 4405P
FEDES BLOCKANA 429
5L HOBO DESIGN 273-7047
FEDES LAKINA 9194
LJC MISSION STATEMENT P27
C-T MISS PAN 0760
BIEBER MAKE MIMI 7249
FEDES TINA 470

HB	GM	CED	BW	WW	YW	M	ME	HPG	CEM	ST	MARB	YG	CW	REA	FAT
125	50	5	0.2	70	111	27	0	16	5	12	0.49	0.12	37	0.04	0.01

Bred to: **FEDES PATRIOT D207 (#3539846)**

Due Date: 1/20/18

D44 is a Tina with extra growth and performance without sacrificing maternal, carcass and calving ease. Take note of her BR 98, WR 108, YR 110. Her dam has a MPAA of 103.3.



5L Advantage
3267-221Y



Feddes Slek 806



FEDES BLOCKANA 9153

Birth Date:
2/4/09

Reg. #
1323176

Category:
100% 1A

ET Calf: **5L ADVANTAGE 3267-221Y (#1450210) X**
FEDES SLEEK 806 (#1235063)

BUF CRK THE RIGHT KIND U199
5L ADVANTAGE 3267-221Y
5L ADINA 195-3267

BIEBER ROMERO 9136
FEDES SLEEK 806
FEDES SLEEK 2S

BUF CRK LANCER R017
BUF CRK SHOSHONE R353
5L TRADITION 203-6145
5L ADINA 2113-195
BUF CRK ROMEO L081
BIEBER MELLSSIE 8337
BIEBER MAKE MIMI 7249
FEDES SLEEK 446

Projected EPDs:

HB	GM	CED	BW	WW	YW	M	ME	HPG	CEM	ST	MARB	YG	CW	REA	FAT
		12	-3.2	69	105	21	-2	10	7	13	0.54	0.09	28	0.09	0.02

9153 is a pregnant recip. 806 has done a great job at Feddes Red Angus. Her first calf is Oscar X28 at ABS. In 2017 she had our two top sellers. Feddes Liberty D210, who sold to Select Sires, and Feddes Patriot D207 who sold to Dave & Linda Geib. She has three daughters in the herd and four daughters in the replacement pen. 5L Advantage 221Y is a moderate-framed performance sire with excellent feet and legs, and is siring really good daughters.



Lot 42



FEDES BLOCKANA 9240-D18

Birth Date:
1/24/16

Reg. #
3539673

Category:
100% 1A

BECKTON EPIC R397 K
LSF SAGA 1040Y
LSF MINOLA T7172 W9041

FEDES GRAND CHER 7125
FEDES BLOCKANA 9240
FEDES BLOCKANA R42

BECKTON EPIC K F075
BECKTON KIT F468 JL
FEDES BIG SKY R9
LSF MINOLA K1279 T7172
SUNR GRAND CHEROKEE 909N
FEDES OSCE 149
BIEBER MAKE MIMI 7249
FEDES BLOCKANA 8106

HB	GM	CED	BW	WW	YW	M	ME	HPG	CEM	ST	MARB	YG	CW	REA	FAT
85	49	5	-1.2	66	105	27	-4	16	1	8	0.11	0.06	31	0.27	0.03

Bred to: **FEDES PATRIOT D207 (#3539846)**

Due Date: 1/20/18

This Blockana female sure has the cow look to her. Her pedigree is loaded with maternal giants of the breed, including Grand Canyon, Red Lightning, Make Mimi, EBV, Rambler and Rambo 502.





Lot 43



GMRA VENICE 950

Birth Date:
1/18/09

Reg. #
1322847

Category:
100% 1A

BLUE RIDGE PONDEROSA
LCB HOSS A444N
RSLND REBELLA 120-502

BIEBER TOP MONEY 7948
GMRA VENICE 384
GMRA VENICE 210

LCHMN NO EQUAL 1174D
BLUE RIDGE KIMA 794
BASIN HOBO 79E
KRN REBA'S ROBIN
BIEBER RED MOON 6042
BIEBER SIRENA 6708
GMRA EBV 935
GMRA VENICE 015

HB	GM	CED	BW	WW	YW	M	ME	HPG	CEM	ST	MARB	YG	CW	REA	FAT
111	44	4	-1.6	46	53	33	8	7	4	15	0.04	0	-1	-0.18	-0.01

Bred to: **HXC DECLARATION 5504C (#3494198)**

Due Date: 3/7/18

Here is an absolute powerhouse! Venice 950 has always delivered with pounds at weaning, and she just keeps getting better with age. Her 2017 bull calf turned in a 116 WR! She posts an MPPA of 104.9 on 7 calves with an average WR of 106. Every calf has been retained with no culls at weaning. She is a beautiful representation of a mature, hardworking Red Angus female, with a straight top, great structure and udder and a beautiful muscle pattern. Look for her calves to stand out in the herd!



Lot 44



GMRA JUANA 105

Birth Date:
1/11/11

Reg. #
1429024

Category:
100% 1A

BECKTON JULIAN GG B571
HXC CONQUEST 4405P
HXC ELLIE MAY MA638

GMRA EBV 266
GMRA JUANA 999
GMRA JUANA 224

BKT JULIAN 7526 G
BKT MARTA 9A13 JL
BFCK CHEROKEE CNYN 4912
HXC 529E
GMRA EBV 935
BJR ESTONIA 9S-1210
BASIN HOBO 79E
GMRA JUANA 039

HB	GM	CED	BW	WW	YW	M	ME	HPG	CEM	ST	MARB	YG	CW	REA	FAT
126	50	11	-4.1	58	89	32	5	9	3	12	0.49	0.03	17	0.03	0

Bred to: **HXC DECLARATION 5504C (#3494198)**

Due Date: 3/1/18

Juana 105 is a deep, broody Conquest x EBV 266 combination. She posts outstanding performance with a 103.9 MPPA on five calves. Her average WR is a 105 and average YR is 103. She just keeps producing top-end calves, with her 2017 bull calf posting a WR of 108. Her pedigree is stacked with maternal strength and you have to go back over 30 years to find an MPPA below 100. She has seven EPDs in the top 29% of the breed or higher, and of those, three are in single digits. Lots of proven maternal strength.



Lot 45



GMRA PEACHA 454

Birth Date:
1/22/14

Reg. #
1681538

Category:
100% 1A

FRITZ JUSTICE 8013
GMRA PEACEMAKER 1216
GMRA THELMA 930

BASIN HOBO 79E
GMRA PEACHA 135
GMRA PEACHA 214

VGW JUSTICE 614
FRITZ CHRIS 6047
LJC MISSION STATEMENT P27
GMRA THELMA 319
BUF CRK HOBO 2595
DOUBLE FORK 079Z
GMRA EBV 935
WGF MISS PEACHA 86

HB	GM	CED	BW	WW	YW	M	ME	HPG	CEM	ST	MARB	YG	CW	REA	FAT
128	48	0	2.5	76	110	33	-2	6	6	16	0.51	0.14	39	0.25	0.04

Bred to: **FEDDES BOBCAT A230 (#1607674)**

Due Date: 4/12/18

This young cow could be your next matriarch! She has an MPPA of 102.3 and comes from a long line of maternal longevity. Her dam produced 13 calves for us and this Peacemaker daughter was her crowning achievement with a weaning ratio of 109. Her granddam and great granddam stayed in the herd until old age set in. Peacha 454 raised a featured bull calf in our 2017 bull sale, GMRA Midnight Express 6216, who sold to Lucht Red Angus for \$8500. And take a look at the EPD profile – 10 numbers in the top 29% of the breed or higher with WW, YW, Milk, Stay and CW all in single digits. She will make anything work!



GMRA Midnight Express 6216

Catalog online at www.redcows.net • Video online at www.dvauction.com

Big Sky Elite Female Sale - 19



Lot 46



C-T VERDI 4020

Birth Date:
1/24/14

Reg. #
1680672

Category:
100% 1A

BECKTON JULIAN GG B571
HXC CONQUEST 4405P
HXC ELLIE MAY MA638

BKT JULIAN 7526 G
BKT MARTA 9A13 JL
BFCK CHEROKEE CNYN 4912
HXC 529E
MLK CRK CUB 722
RED CROWFOOT OMEGA 9179J
LMB ELWAY 938
FED'S VERDI 5150

RED CROWFOOT OLE'S OSCAR
C-T VERDI 1030
CTDB VERDI 904

HB	GM	CED	BW	WW	YW	M	ME	HPG	CEM	ST	MARB	YG	CW	REA	FAT
107	51	7	-2.9	59	95	23	3	9	6	10	0.57	0.03	23	0.2	0.02

Bred to: **PCHFRK PRIME 1323 (#1601273)**

Due Date: 3/20/18

One of my favorite young cows sired by Conquest and out of our great C-T Verdi 1030, dam of Genex bull (C-T Red Rock 5033). 4020 has great individual performance with 104 WR and 105 YR, with eight traits in top 30%. She is the quality of cow that could go on to somebody's ET program. MPPA: 100.5



Lot 47



C-T CHRIS 3034

Birth Date:
1/28/13

Reg. #
1606219

Category:
100% 1A

LJC MISSION STATEMENT P27
C-T GRAND STATEMENT 1025
C-T MISS PAN 0760

LJC LANCER 806
LJC HANNAH 106
LCHMN GRANDCANYON 1244G
CTDB HOBOS GAL 803

FCC RAMBO 502
C-T CHRIS 426
LARSON CRIS 926

CV FOUR TIMES
COPPER LASS 2392
DEL JOHN 536-CIT-768
BCH CRIS 523-4427

HB	GM	CED	BW	WW	YW	M	ME	HPG	CEM	ST	MARB	YG	CW	REA	FAT
89	48	1	0.3	53	79	20	-5	12	5	10	0.6	0.05	17	-0.05	0

Bred to: **C-T EXCEPTIONAL 5015 (#3471517)**

Due Date: 2/20/18

Big-bodied, extremely maternal Chris cow stemming from our great 426 donor cows by Rambo 502. These Grand Statement daughters don't miss and having this kind of maternal backing, you will want to own this cow.



Lot 48



DKK OLIVIA 457

Birth Date:
2/2/14

Reg. #
1684480

Category:
100% 1A

BECKTON JULIAN GG B571
HXC CONQUEST 4405P
HXC ELLIE MAY MA638

BKT JULIAN 7526 G
BKT MARTA 9A13 JL
BFCK CHEROKEE CNYN 4912
HXC 529E

GLACIER CHATEAU 744
DKK OLIVIA 8001
DKK OLIVIA 622

LMAN KING ROB 8621
GLACIER REBALA
LSF COMBINATION A301M
FISCHERS OLIVIA 272

HB	GM	CED	BW	WW	YW	M	ME	HPG	CEM	ST	MARB	YG	CW	REA	FAT
109	51	6	-3.3	62	99	21	6	12	5	10	0.52	0.09	24	0.08	0.02

Bred to: **DKK CAPTAIN INCREDIBLE 6042 (#3533232)**

Due Date: 2/25/18

A calving-ease, performance and carcass queen – her progeny birth ratio is 87 then she ramps it up to 101 and 104 weaning and yearling ratios respectfully. Olivia 457 sports eight indices in the top one-third of the breed. Mated to DKK Captain Incredible; one can only imagine the awesome package that is coming next spring. If we didn't already have a replacement heifer out of her, this gal would not be in for sale.



Lot 49



DKK PEACE 9070

Birth Date:
3/2/09

Reg. #
1304476

Category:
100% 1A

MESSMER JOSHUA 019P
MESSMER PACKER S008
MESSMER MILLIE 124P

BECKTON JULIAN GG B571
MESSMER PANDORA M186

VGW TOP PICK 130
MESSMER MILLIE 9416

DKK WHAT A DREAM 745

RD DREAMMAKER OF 3R
CK'S MISS PAN 2028

DKK PEACE 991

DKK PEACE 731

BUF CRK HOB0 1961
DKK BLOSSOM 581

HB	GM	CED	BW	WW	YW	M	ME	HPG	CEM	ST	MARB	YG	CW	REA	FAT
79	49	4	1	70	107	13	7	10	4	8	0.41	0.04	35	0.22	0

Bred to: **SILVEIRAS MISSION NEXUS (#1410853)**

Due Date: 3/3/18

The perfect blend of performance, productivity and phenotype (udder and feet included). She has a 361-day calving interval on seven pregnancies. Her progeny weaning ratio is 102 and their yearling ratio is 105. What more could you ask a mama cow to do? Mated to Silveiras Mission Nexus 1378; I would expect her legacy to continue.



Lot 50



FEDDES JESSA Y68 A31

Birth Date:
1/25/13

Reg. #
1607827

Category:
100% 1A

BUF CRK THE RIGHT KIND U199
LOOSLI RIGHT KIND 107
MISS LL DESIGN 949

BUF CRK LANCER R017
BUF CRK SHOSHONE R353

5L HOB0 DESIGN 273-7047
LOOSLI MIMI 608

C-T BIG CHIEF 0934

FEDDES BIG SKY R9
C-T MISCHIEF 0765

FEDDES JESSA Y68

LARSON JESSA ILKA 717-373

5L NORSEMAN KING 2291
LARSON JESSA ILKA 373-6

HB	GM	CED	BW	WW	YW	M	ME	HPG	CEM	ST	MARB	YG	CW	REA	FAT
136	50	8	-1.7	66	100	23	1	13	6	13	0.39	0.02	26	0.18	0

Bred to: **5L ADVANTAGE 2170-165A (#1627167)**

Due Date: 4/20/18

This young cow has a 106.3 MPPA. Top 10% HB, 29% GM, 21% CED, 12% ST. Her 2017 bull calf has a 111 WR and went on test October 4 at 810#.



Lot 51



FEDDES BLOCKANA 8100 A4

Birth Date:
1/19/13

Reg. #
1607734

Category:
100% 1A

BIEBER MAKE MIMI 7249
FEDDES MONTANA X44
FEDDES BLOCKANA 8121

BJR MAKE MY DAY 981
BIEBER SIRENA 6708

5L FOREVER GRAND 5834
FEDDES BLOCKANA 173

5L NORSEMAN KING 2291

VGW KING OF THE WEST
NORSEMAN 1312 PJM

FEDDES BLOCKANA 8100

FEDDES BLOCKANA 472

LCHMN GRANDCANYON 1244G
FEDDES BLOCKANA 899

HB	GM	CED	BW	WW	YW	M	ME	HPG	CEM	ST	MARB	YG	CW	REA	FAT
75	50	3	-0.4	69	102	27	1	12	1	8	0.39	-0.15	29	0.51	-0.03

Bred to: **5L ADVANTAGE 2170-165A (#1627167)**

Due Date: 3/13/18

This Montana X44 daughter has a 105 MPPA. She has had two very good sons sell through our spring sale. She's the kind that could raise a herd sire! I've had a tough time deciding what cows to sell this year. Writing footnotes on these made me ask, "Why did I put her in the sale?" MPPA 105.

Bred Females

BIG SKY ELITE Female Sale



PIE One Of A Kind 510, service sire



FEDDES LAKINA Y46

Birth Date:
1/29/11

Reg. #
1423196

Category:
100% 1A

5L NORSEMAN KING 2291
FEDDES ATLAS 12S
FEDDES BLOCKANA 472

VGW KING OF THE WEST
NORSEMAN 1312 PJM
LCHMN GRANDCANYON 1244G
FEDDES BLOCKANA 899

BIEBER MAKE MIMI 7249
FEDDES LAKINA 8109
FEDDES LAKINA 310

BJR MAKE MY DAY 981
BIEBER SIRENA 6708
LCHMN GRANDCANYON 1244G
FEDDES LAKINA 954

HB	GM	CED	BW	WW	YW	M	ME	HPG	CEM	ST	MARB	YG	CW	REA	FAT
71	49	3	-1.3	56	83	29	3	12	-2	9	0.38	-0.19	17	0.54	-0.02

Bred to: **PIE ONE OF A KIND 510 (#3503311)**

Due Date: 3/3/18

She is a granddaughter of 310, who is Big Sky's dam. Y46's dam sold to Wildcat Creek Ranch and then to Pieper's at Wildcat's dispersion.



Lot 53



DDRA VENICE 2003

Birth Date:
1/8/12

Reg. #
3557470

Category:
100% 1A

BECKTON WARRIOR R667 CL
VGW SCOUT 040
VGW IMF-CHRSS 0504

BECKTON WARRIOR CL M686
BECKTON CHRISTY M855 CH

MESSMER PACKER S008
DDRA VENICE 0008
LGR VENICE 520

MESSMER JOSHUA 019P
MESSMER MILLIE 124P
LCC CHEYENNE B221L
LGR VENICE 9002

HB	GM	CED	BW	WW	YW	M	ME	HPG	CEM	ST	MARB	YG	CW	REA	FAT
103	50	4	-0.5	72	118	19	7	11	3	11	0.36	0.12	40	0.27	0.03

Bred to: **BIEBER FAF ROLLIN DEEP B627 (#1709419)**

Due Date: 3/25/18

The Venice cattle are long and big bodied cows, 2003 being no exception. She has a perfect udder and a very clean front end. With a MPPA of 103.3 and BR, WR and YR of 106, 112 and 114 respectively, she is a solid choice of females.



Trac DeBoer



GMRA AMY 3109

Birth Date:
2/15/13

Reg. #
1605068

Category:
100% 1A

MESSMER PACKER S008
GMRA TRILOGY 0226
GMRA LAKOTA 625

MESSMER JOSHUA 019P
MESSMER MILLIE 124P

LMN PROOF POSITIVE1305E
GMRA AMY 209
GMRA AMY 032

GLACIER CHATEAU 744
GMRA LAKOTA 380
RED CR PROOF 20A
LCHMN DUCHESS C1011
LCHMN RED SPREAD 1271F
GMRA AMY 547

HB	GM	CED	BW	WW	YW	M	ME	HPG	CEM	ST	MARB	YG	CW	REA	FAT
138	49	10	-2	72	103	16	5	12	13	11	0.32	-0.01	27	0.24	0

Bred to: **GMRA STETSON 2240 (#1525314)**

Due Date: 3/5/18

We don't like to part with these solid Trilogy daughters, but here is your chance to take one home. She posts an MPPA of 101.3 on three calves and her heifer calf this year turned in a 109 WR. Her dam was with us her entire life and posted an impressive 108.8 MPPA on 11 calves. Numbers are rock solid with 10 in the top 35% of the breed or higher, featuring a single-digit HB index, WW and CEM. A great genetic opportunity on a young performance-minded female!



Lot 55



GMRA NEXA 3102

Birth Date:
2/4/13

Reg. #
1605003

Category:
100% 1A

MESSMER JOSHUA 019P
MESSMER PACKER S008
MESSMER MILLIE 124P

GMRA LARAMIE 5110
GMRA NEXA 040
GMRA NEXA 845

BECKTON JULIAN GG B571
MESSMER PANDORA M186
VGW TOP PICK 130
MESSMER MILLIE 9416
LCC CHEYENNE B221L
GMRA LAKOTA 341
BROWN VACATION H7106
GMRA NEXA 004

HB	GM	CED	BW	WW	YW	M	ME	HPG	CEM	ST	MARB	YG	CW	REA	FAT
118	50	5	-2.7	61	91	22	8	12	5	12	0.47	-0.05	20	0.38	0.01

Bred to: **FEDDES BOBCAT A230 (#1607674)**

Due Date: **3/4/18**

Just look at the length on this Packer x Laramie combination. She posts an MPPA of 100.7 and comes from a long line of maternal power. You have to trace her pedigree back 10 generations before you can find an MPPA under 100. There is nothing more reassuring than proven maternal performance. And with that she brings a super-solid number profile with six EPDs in the top 27% of the breed or higher, and ALL BUT TWO in the top 48%! She will be easy to breed!



C-T Exceptional 5015, service sire



C-T VERDI 0807

Birth Date:
1/15/08

Reg. #
1235603

Category:
100% 1A

BIEBER MAKE MIMI 7249
FEDDES BIG SKY R9
FEDDES LAKINA 310

FED'S POINT 389
FED'S VERDI 5150
FED'S VERDI 2109

BJR MAKE MY DAY 981
BIEBER SIRENA 6708
LCHMN GRANDCANYON 1244G
FEDDES LAKINA 954
GLACIER TOP POINT
GLACIER HI-RB-LS
GLACIER SUPER WEIGHT
GLACIER VERDI

HB	GM	CED	BW	WW	YW	M	ME	HPG	CEM	ST	MARB	YG	CW	REA	FAT
77	48	6	-3.4	41	56	28	2	11	1	9	0.54	-0.07	-1	0.16	0.01

Bred to: **C-T EXCEPTIONAL 5015 (#3471517)**

Due Date: **2/25/18**

Verdi 0807 is one of the great Big Sky daughter that has paid her way year after year. Very sound phenotype with picture-perfect udder and feet and at 10 years of age. These Glacier Verdi cows have held together and have made Angus cows the way they need to be made.



Lot 57



DKK DIXIE 439

Birth Date:
1/28/14

Reg. #
1684393

Category:
100% 1A

MESSMER PACKER S008
DKK POWER PACK 236
DKK MATTELINE 8014

4L SUPER VISION R2292
DKK DIXIE 011
DKK DIXIE P06

MESSMER JOSHUA 019P
MESSMER MILLIE 124P
BECKTON LANCER F442 T
DKK MATTELINE N01
GLACIER CHATEAU 744
4L MR RAMBO R709
GLACIER CHATEAU 744
DKK DIXIE 901

HB	GM	CED	BW	WW	YW	M	ME	HPG	CEM	ST	MARB	YG	CW	REA	FAT
82	50	4	-1.9	49	76	17	7	6	5	9	0.46	-0.16	13	0.5	0

Bred to: **DKK RED ROYAL 516 (#3486495)**

Due Date: **2/24/18**

This quiet mama is claiming super-hero status! Her amazing 2017 heifer calf posted a 113 weaning ratio. No wonder Dixie 439 is already posting a 103.5 MPPA. With extra emphasis on carcass traits, she will most certainly add value to your herd.



Lot 58



DKK IMPRESS 462

Birth Date:
2/3/14

Reg. #
1684491

Category:
100% 1A

RED FINE LINE MULBERRY 26P
DKK AUTHORITY 152
DKK STARLETTE R70

GLACIER CHATEAU 744
DKK IMPRESS 9026
DKK IMPRESS 727

RED COMPASS MULBERRY 449M
RED DUS FAYETTE 8G
C-T BARNEY 317
DKK STARLETTE K28
LMAN KING ROB 8621
GLACIER REBALA
DKK ADDITION N10
DKK IMPRESS R89

HB	GM	CED	BW	WW	YW	M	ME	HPG	CEM	ST	MARB	YG	CW	REA	FAT
104	45	0	0.1	45	56	25	2	12	8	13	0.28	-0.04	3	0.08	0.01

Bred to: **DKK RUMBLE 6020 (#3533210)**

Due Date: 3/5/18

A fancy mama cow with added length and a picture perfect udder. No surprise when you look back at her pedigree and identify her dam – loads of style and stayability. Impress 462 has a 352-day calving interval. Sure glad we kept her fantastic 2017 heifer as a replacement.



Lot 59



FEDDES BLOCKANA 8104

Birth Date:
2/11/08

Reg. #
1235167

Category:
100% 1A

BIEBER MAKE MIMI 7249
FEDDES BIG SKY R9
FEDDES LAKINA 310

BFCK CHEROKEE CNYN 4912
FEDDES BLOCKANA R40
FEDDES BLOCKANA 392

BJR MAKE MY DAY 981
BIEBER SIRENA 6708
LCHMN GRANDCANYON 1244G
FEDDES LAKINA 954
BUF CRK CHF 824-1658
MRM 1431 8611 9109
GLACIER CHATEAU 744
FEDDES BLOCKANA 899

HB	GM	CED	BW	WW	YW	M	ME	HPG	CEM	ST	MARB	YG	CW	REA	FAT
100	49	0	-1.3	69	96	27	5	18	-6	12	0.4	-0.05	24	0.19	-0.02

Bred to: **PIE ONE OF A KIND 510 (#3503311)**

Due Date: 2/2/18

8104 is a moderate-framed, big-bodied daughter of Big Sky with an excellent udder, feet, and big structure. Her average WR on 8 head is 102.5, YR 101. She's had eight calves, seven have been bulls that sold through our spring sale. Her 2017 bull calf's adjusted 205-day weight was 730#.



Lot 60



EMBRYO PACKAGE

Selling 3 Embryos, guarantee 1 pregnancy.

BUF CRK THE RIGHT KIND U199
PIE ONE OF A KIND 352
PIE FAYETTE 1160

FEDDES BIG SKY R9
FEDDES BLOCKANA 863
FED'S BLOCKANA 4225

BUF CRK LANCER R017
BUF CRK SHOSHONE R353
LSF SAND HILLS 9008W
PIE FAYETTE 782
BIEBER MAKE MIMI 7249
FEDDES LAKINA 310
BUF CRK HOBO 1961
BJR BLOCKANA 502-5185

Projected EPDs:

HB	GM	CED	BW	WW	YW	M	ME	HPG	CEM	ST	MARB	YG	CW	REA	FAT
		7	-0.7	78	123	22	4	16	5	11	0.18	0.02	42	0.20	-0.02

PIE ONE OF A KIND 352 (#1651711) x FEDDES BLOCKANA 863 (#1235194)

863 is a donor cow we decided not to sell this year, but here is an opportunity to buy key genetics. 863 is a moderate-framed Big Sky daughter with tons of girth and guts. If you are choosing EPDs, she is probably not for you, but if you want to add extra cow power take a look. PIE One Of A Kind 352 has done a great job for many around the country. His progeny at Feddes Red Angus are really good.

RA50K
A GENESIS PRODUCT



Lot 61



FEDDES BLOCKANA 9223

Birth Date:
3/13/09

Reg. #
1323182

Category:
100% 1A

BJR MAKE MY DAY 981
BIEBER MAKE MIMI 7249
BIEBER SIRENA 6708

BJR EASY RIDER 781
BJR TOW KANA 117-710

BIEBER IMPACT 4399
BIEBER MIMI 4227

CFLD REBELLAS ROBINHOOD
FEDDES BLOCKANA 172
FEDDES BLOCKANA 899

LMAN ROBIN HOOD 1174B
CFLD REBELLA 803-009

LARSON RED LIGHTNING
FED'S BLOCKANA 4231

HB	GM	CED	BW	WW	YW	M	ME	HPG	CEM	ST	MARB	YG	CW	REA	FAT
117	49	8	-1.4	58	83	27	5	13	6	11	0.48	-0.08	17	0.19	-0.02

Bred to: **3SCC DOMAIN A163 (#1619642)**

Due Date: 2/1/18

This is a bigger framed Mimi daughter with 10 traits in the top 31% of the breed. She is from a long line of donor cows including 172, who sold to Boot Jack-Tilleman, and 899 who sold to Ken Marquis in 2005 for \$20,000.



Lot 62



FEDDES BLOCKANA 8121

Birth Date:
2/18/08

Reg. #
1235202

Category:
100% 1A

LCHMN GRANDCANYON 1244G
5L FOREVER GRAND 5834
NORSEMAN 1312 PJM

BUF CRK CHF 824-1658
KRN REBA'S ROBIN

376 P J M 141
P J M POWERPOINT 2009

HOLDEN HI HO 574
FEDDES BLOCKANA 173
FEDDES BLOCKANA 899

BJR HI HO 916
BECKTON EOLA 2025 CB

LARSON RED LIGHTNING
FED'S BLOCKANA 4231

HB	GM	CED	BW	WW	YW	M	ME	HPG	CEM	ST	MARB	YG	CW	REA	FAT
54	47	0	0.8	59	89	28	-7	16	7	4	0.08	-0.11	24	0.36	-0.03

Bred to: **FEDDES SILVER BOW B226 (#1687147)**

Due Date: 1/26/18

8121 is the dam of Montana X44. She is a moderate-framed cow with excellent feet, leg and udder structure. She has two daughters in the herd and sold several bulls through our annual sale. MPPA 100.9.



Lot 63



GMRA ESTONIA 935W

Birth Date:
1/15/09

Reg. #
1322818

Category:
100% 1A

BLUE RIDGE PONDEROSA
LCB HOSS A444N
RSLND REBELLA 120-502

LCHMN NO EQUAL 1174D
BLUE RIDGE KIMA 794

BASIN HOBO 79E
KRN REBA'S ROBIN

LCHMN HEVN'S SAKE 1002F
GMRA ESTONIA 228
GMRA ESTONIA 826

LAKOTAS HEAVENLY 305
LEACHMAN PRILARK

LMAN KING ROB 8621
BJR ESTONIA 9S-1210

HB	GM	CED	BW	WW	YW	M	ME	HPG	CEM	ST	MARB	YG	CW	REA	FAT
145	49	8	-3.1	54	86	32	9	8	10	15	0.17	0.03	17	0.16	0.01

Bred to: **GMRA TESLA 6214 (#3538390)**

Due Date: 5/4/18

Just take a look at this beautiful, cherry red Estonia dam. She has a beautiful udder and carries tons of capacity. She features an MPPA of 102.5 on 7 calves. Her average WR is 103 and average YR is 104, all while posting below average birth weights. A strong EPD profile rounds out the performance, with 6 numbers in the top 19% of the breed or higher, emphasizing maternal strengths.



GMRA Make It Easy 8226, sire



GMRA ANNE 399

Birth Date:
2/1/13

Reg. #
1605020

Category:
100% 1A

BIEBER MAKE MIMI 7249
GMRA MAKE IT EASY 8226
GMRA LAKOTA 625

GMRA CITADEL 6109
GMRA ANNE 095
GMRA ANNE 373

BJR MAKE MY DAY 981
BIEBER SIRENA 6708
GLACIER CHATEAU 744
GMRA LAKOTA 380
GLACIER CHATEAU 744
GMRA NEXA 235
GMRA EBV 266
GMRA ANNE 514

HB	GM	CED	BW	WW	YW	M	ME	HPG	CEM	ST	MARB	YG	CW	REA	FAT
112	49	6	-0.5	64	99	23	8	7	7	12	0.44	0.02	28	0.04	-0.01

Bred to: **FEDDES BOBCAT A230 (#1607674)**

Due Date: 4/12/18

This Make It Easy daughter is all about pounds at weaning. She posts an MPPA of 102.9 and has an average WR of 104. Her 2017 heifer hit the ground at a nice 84# and weaned off with a 107 WR. All of the performance is complemented by a nice set of numbers all the way across, with 10 in the top 35% or higher.



HXC Declaration 5504C, service sire



GMRA LAKOTA 480

Birth Date:
2/3/14

Reg. #
1681639

Category:
100% 1A

GMRA EBV 266
GMRA MOUNTAIN 9287
GMRA VENICE 359

LSF COMBINATION A301M
GMRA LAKOTA 636S
GMRA LAKOTA 325

GMRA EBV 935
BJR ESTONIA 9S-1210
BASIN HOBBO 79E
GMRA VENICE 146
LCHMN TOP BRASS 1049H
WHF LASS 27G-29J
GLACIER CHATEAU 744
GMRA LAKOTA 149

HB	GM	CED	BW	WW	YW	M	ME	HPG	CEM	ST	MARB	YG	CW	REA	FAT
102	49	3	-1.3	60	99	25	8	9	8	11	0.54	0.27	27	-0.33	0.04

Bred to: **HXC DECLARATION 5504C (#3494198)**

Due Date: 3/25/18

This Mountain daughter is out of the great Lakota cow family. She is holding up the legacy of the Lakota name, already posting an MPPA of 101.7. Her dam and granddam both stayed in the herd their entire productive lives and her granddam posted an MPPA of 106.3 on 14! Look for this young female to stay in your herd while producing performance minded progeny.



Lot 66



C-T HONEST GIRL 1010

Birth Date:
1/23/10

Reg. #
1365717

Category:
100% 1A

BIEBER MAKE MIMI 7249
FEDDES BIG SKY R9
FEDDES LAKINA 310

4L SUPER VISION R2292
C-T HONEST GIRL 0804
C-T HONEST GIRL 334

BJR MAKE MY DAY 981
BIEBER SIRENA 6708
LCHMN GRANDCANYON 1244G
FEDDES LAKINA 954
GLACIER CHATEAU 744
4L MR RAMBO R709
BADLANDS MR BEEF 805
CTDB HONEST GIRL 018

HB	GM	CED	BW	WW	YW	M	ME	HPG	CEM	ST	MARB	YG	CW	REA	FAT
96	49	3	-1.5	54	79	25	5	13	4	10	0.57	-0.04	15	0.15	0

Bred to: **C-T EXCEPTIONAL 5015 (#3471517)**

Due Date: 3/25/18

A solid Big Sky cow from the powerful Honest Girl cow family. The Big Sky cows have been great producers over the years and having bulls like Make Mimi, Big Sky and Supervision in your pedigree is sure to make some awesome cows. MPPA: 100



Lot 67



DKK HARMONY 9060

Birth Date:
2/20/09

Reg. #
1304463

Category:
100% 1A

MESSMER JOSHUA 019P
MESSMER PACKER S008
MESSMER MILLIE 124P

BECKTON JULIAN GG B571
MESSMER PANDORA M186
VGW TOP PICK 130
MESSMER MILLIE 9416

DKK ADDICTION N10
DKK HARMONY 636
DKK HARMONY 532

BJR JR 107
DKK DIXIE 901
DKK BOZO 307
CK'S MISCHIEF 3126

HB	GM	CED	BW	WW	YW	M	ME	HPG	CEM	ST	MARB	YG	CW	REA	FAT
68	48	5	-0.3	57	81	23	7	11	3	7	0.36	-0.07	17	0.34	0

Bred to: **DKK RED ROYAL 516 (#3486495)**

Due Date: 3/15/18

Harmony 9060 is a classy, easy-fleshing and consistently productive mama cow. She always brings home a great calf no matter how she is bred. She has a balanced set of numbers and stems from the highly favored Harmony cow family. 101 MPPA.



Lot 68



FEDDES BLOCKANA 825

Birth Date:
1/22/08

Reg. #
1235174

Category:
100% 1A

VGW KING OF THE WEST
5L NORSEMAN KING 2291
NORSEMAN 1312 PJM

VGW ACE 613
VGW MT TABITHA 9633
376 P J M 141
P J M POWERPOINT 2009

BIEBER MAKE MIMI 7249
FEDDES BLOCKANA R62
FEDDES BLOCKANA 307

BJR MAKE MY DAY 981
BIEBER SIRENA 6708
GLACIER MARIAS 548
FEDDES BLOCKANA 935

HB	GM	CED	BW	WW	YW	M	ME	HPG	CEM	ST	MARB	YG	CW	REA	FAT
67	49	3	0	52	79	28	2	10	-4	9	0.48	-0.21	17	0.54	-0.03

Bred to: **LASO FRONT ROW X37D (#3549925)**

Due Date: 2/11/18

825 is a Norseman King/Mimi cross that has earned a 102.5 MPPA. She has a heifer calf in our replacements. Her 2016 bull calf weaned at 797#, and a 1,351# YW, before selling to a top cattleman in Oklahoma.



Lot 69



FEDDES LAKINA Y15 B24

Birth Date:
1/28/14

Reg. #
1687144

Category:
100% 1A

C-T GRAND STATEMENT 1025
FEDDES GRANITE Z132
FEDDES SLEEK 2S

LJC MISSION STATEMENT P27
C-T MISS PAN 0760

MESSMER PACKER S008
FEDDES LAKINA Y15
FEDDES LAKINA 106

BIEBER MAKE MIMI 7249
FEDDES SLEEK 446

MESSMER JOSHUA 019P
MESSMER MILLIE 124P

BUF CRK CHF 824-1658
FEDDES LAKINA 954

HB	GM	CED	BW	WW	YW	M	ME	HPG	CEM	ST	MARB	YG	CW	REA	FAT
104	51	6	-2.4	56	87	24	4	11	5	10	0.79	-0.04	18	0.43	0.02

Bred to: **5L DEFENDER 560-30Z (#1549933)**

Due Date: 1/26/18

B24 has two daughters in our herd. She is very balanced on her traits. Note her top 9% GM, 5% MA and 7% REA.



Lot 70



FEDDES BLOCKANA 838

Birth Date:
1/25/08

Reg. #
1235155

Category:
100% 1A

BIEBER MAKE MIMI 7249
FEDDES BIG SKY R9
FEDDES LAKINA 310

BUF CRK HOB0 1961
FED'S BLOCKANA 4225
BJR BLOCKANA 502-5185

BJR MAKE MY DAY 981
BIEBER SIRENA 6708
LCHMN GRANDCANYON 1244G
FEDDES LAKINA 954
BUF CRK HOB0 1413
BUF CR CARRIE VC1174
FCC RAMBO 502
BJR BLOCKANA 50M-113

HB	GM	CED	BW	WW	YW	M	ME	HPG	CEM	ST	MARB	YG	CW	REA	FAT
99	49	6	-1.6	56	85	29	3	13	3	10	0.43	0	18	0.2	0.01

Bred to: **PIE ONE OF A KIND 510 (#3503311)**

Due Date: 2/6/18

This cow raised a bull calf in 2017 with a 746# 205-day weight. She's another Big Sky daughter with tons of body and a near-perfect udder. Her daughter, C45, raised a bull calf on her first try at 752#, WR 111.



Lot 71



GMRA PRIDSTOM 671

Birth Date:
1/24/16

Reg. #
3538300

Category:
100% 1A

5L ADVANTAGE 3267-221Y
5L TOP FLIGHT 3010-491A
5L OSCE 2948-3010

FRITZ JUSTICE 8013
GMRA PRIDSTOM 159
GMRA PRIDSTOM 920

BUF CRK THE RIGHT KIND U199
5L ADINA 195-3267
5L DOUBLE BLAZE 1134-8576
5L OCSE 233-2948
VGW JUSTICE 614
FRITZ CHRIS 6047
LCB HOSS A444N
GMRA PRIDSTOM 727

HB	GM	CED	BW	WW	YW	M	ME	HPG	CEM	ST	MARB	YG	CW	REA	FAT
132	48	6	0.3	77	110	21	2	8	9	14	0.2	0.13	35	0.27	0.05

Bred to: **FEDDES BRUNSWICK D202 (#3539689)**

Due Date: 3/17/18

What a great Top Flight x Justice combination. She turned in great personal performance with a 107 WR and a 102 YR. Her dam has always kept an eye towards performance with an MPPA of 103.9 on four and her granddam has a 106.6 on five calves. Look for Pridstom 671 to follow suit!



Lot 72



GMRA VENICE 614

Birth Date:
1/10/16

Reg. #
3538351

Category:
100% 1A

BIEBER ROUGH RIDER 10712
BIEBER ROOSEVELT W384
BIEBER SHEBA 9602

MESSMER PACKER S008
GMRA VENICE 363
GMRA VENICE 733

BASIN TREND SETTER 6074
BIEBER ADELLE 8958
C A FUTURE DIRECTION 5321
BIEBER SHEBA 5537
MESSMER JOSHUA 019P
MESSMER MILLIE 124P
BROWN VACATION H7106
GMRA VENICE 231

HB	GM	CED	BW	WW	YW	M	ME	HPG	CEM	ST	MARB	YG	CW	REA	FAT
124	50	3	2.7	69	108	16	0	14	5	13	0.77	0.12	38	0.22	0.03

Bred to: **FEDDES BRUNSWICK D202 (#3539689)**

Due Date: 3/3/18

You've seen the footnotes on the Roosevelt daughters in production that are offered in the sale – here's your chance to take home the newest generation. All of them have great phenotype with an eye towards performance, combined with breed leading EPDs. Venice 614 has a great EPD profile and will be easy to breed.





C-T Grand Design 3023, sire



C-T HONEST GIRL 6035

Birth Date: 1/27/16

Reg. # 3535231

Category: 100% 1A

HXC CONQUEST 4405P
C-T GRAND DESIGN 3023
C-T VERDI 1142

FEDDES BIG SKY R9
C-T HONEST GIRL 1010
C-T HONEST GIRL 0804

BECKTON JULIAN GG B571
HXC ELLIE MAY MA638
5L HOBO DESIGN 273-7047
C-T VERDI 0502
BIEBER MAKE MIMI 7249
FEDDES LAKINA 310
4L SUPER VISION R2292
C-T HONEST GIRL 334

HB	GM	CED	BW	WW	YW	M	ME	HPG	CEM	ST	MARB	YG	CW	REA	FAT
133	51	7	-2.9	57	88	26	4	13	6	13	0.62	-0.03	18	0.21	0

Bred to: **FEDDES EPIC C401 (#1742994)**

Due Date: 2/26/18

An Honest Girl heifer with style. One of the high-selling bred heifer at NILE came from this cow family and 6035 won't disappoint you. Strong EPDs with five traits in the top 25%. She will make a great cross with this solid young Epic son.



Lot 74



C-T COPPER QUEEN 6119

Birth Date: 2/24/16

Reg. # 3535256

Category: 100% 1A

5L HOBO DESIGN 273-7047
C-T MAKIN DESIGNS 1157
C-T TINA 0950

MESSMER PACKER S008
C-T COPPER QUEEN 2063
C-T COPPERQUEEN 0645

5L DESTINATION 893-6215
5L ANALISE 1591-273
BIEBER MAKE MIMI 7249
C-T TINA 0726
MESSMER JOSHUA 019P
MESSMER MILLIE 124P
BFCK CHEROKEE CNYN 4912
FORSTER COPPRQUEEN 7172

HB	GM	CED	BW	WW	YW	M	ME	HPG	CEM	ST	MARB	YG	CW	REA	FAT
102	50	6	-1.5	65	99	21	4	12	3	10	0.52	-0.03	26	0.29	0

Bred to: **C-T RED ROCK 5033 (#3471552)**

Due Date: 1/20/18

These Copper Queen females have risen to the top time and time again and I would expect no less from 6119. Feminine phenotype with good feet and leg structure. Solid performance with 101 WR and 105 YR. Dam has a 103.6 MPPA.



Lot 75



DKK MATTELINE 6156

Birth Date: 2/26/16

Reg. # 3533340

Category: 100% 1A

BROWN JYJ REDEMPTION Y1334
FEDDES RED PACK Y84 B217
FEDDES SLEEK Y84

C-T GRAND STATEMENT 1025
DKK MATTELINE 456
DKK MATTELINE 104

BECKTON NEBULA P P707
JYJ MS JOLENE W16
MESSMER PACKER S008
FEDDES SLEEK 2S
LJC MISSION STATEMENT P27
C-T MISS PAN 0760
5L NORSEMAN KING 2291
DKK MATTELINE 8033

HB	GM	CED	BW	WW	YW	M	ME	HPG	CEM	ST	MARB	YG	CW	REA	FAT
110	52	7	-2	67	109	24	0	11	5	10	0.59	0.03	32	0.29	0.01

Bred to: **DKK PRECISION 6034 (#3533222)**

Due Date: 3/27/18

This stylish heifer has extra focus on calving-ease, performance and carcass traits. She claims eight EPDs in the top one-third of the breed.



Lot 76



CK LADY KATYA 6013

Birth Date:
1/18/16

Reg. #
3533185

Category:
100% 1A

BECKTON JULIAN GG B571
HXC CONQUEST 4405P
HXC ELLIE MAY MA638

BKT JULIAN 7526 G
BKT MARTA 9A13 JL
BFCK CHEROKEE CNYN 4912
HXC 529E

LSF NIGHT CALVER 9921W
BARHI LADY KATYA 401
LARSON LADY KATYA 169-232

MESSMER PACKER S008
LSF DELLA P4078 U8051
LORENZEN SHARP EDGE 9600
LARSON LADY KATYA 232-9

HB	GM	CED	BW	WW	YW	M	ME	HPG	CEM	ST	MARB	YG	CW	REA	FAT
115	51	14	-6.4	56	87	30	2	11	5	9	0.48	0	12	0.18	0.01

Bred to: **FRITZ AMBUSH 12D (#3543988)**

Due Date: 5/7/18

We bought her dam in the NILE sale in 2014, and she carries many of the same qualities as her mother. She is moderate framed, deep bodied and ruby red. With 5 EPDs in the top 30% and with both BW and CED EPDs in the top 2%, there's no need to worry about pulling calves from this lady. She is going to make some awesome heifer bulls. If she wasn't out of our calving time frame, she would be staying with us.



K_{oo}

Feddes Liberty D210, service sire



FEDDES BLOCKANA 9130-D26

Birth Date:
1/25/16

Reg. #
3539715

Category:
100% 1A

HXC MAGNUM 4464P
PIE SHOOTER 8012
PIE NAKITA 6128

BECKTON JULIAN GG B571
HXC 701G
LCB HOSS A444N
PIE NAKITA 3125

FEDDES BIG SKY R9
FEDDES BLOCKANA 9130
FEDDES BLOCKANA 7178

BIEBER MAKE MIMI 7249
FEDDES LAKINA 310
SUNR GRAND CHEROKEE 909N
FEDDES BLOCKANA 172

HB	GM	CED	BW	WW	YW	M	ME	HPG	CEM	ST	MARB	YG	CW	REA	FAT
100	52	3	-2.5	64	102	27	0	11	5	9	0.66	-0.03	27	0.28	-0.01

Bred to: **FEDDES LIBERTY D210 (#3539663)**

Due Date: 3/28/18

D26 is a daughter of Feddes Blockana 9130 who sells as Lot 2 in this sale. We have several full sibs so we decided to sell this heifer. She is a very attractive daughter of Pie Shooter 8012, who did a great job for the Gaiowski family at Sandy Willow Red Angus.



Lot 78



FEDDES BLOCKANA 9144-D61

Birth Date:
2/5/16

Reg. #
3539674

Category:
100% 1A

BECKTON NEBULA P P707
BROWN JYJ REDEMPTION Y1334
JYJ MS JOLENE W16

BECKTON NEBULA M045
BECKTON LANA M809 EP
LJC MISSION STATEMENT P27
HXC JOLENE R548

FEDDES DIRECT NORS 7130
FEDDES BLOCKANA 9144
FEDDES BLOCKANA 041

5L DIRECT FIRE 1641-6443
FEDDES BLOCKANA R11
FED'S ELWAY 766
FED'S BLOCKANA 765

HB	GM	CED	BW	WW	YW	M	ME	HPG	CEM	ST	MARB	YG	CW	REA	FAT
146	51	12	-4.9	39	72	33	-4	12	7	13	0.55	0.04	6	-0.06	0.01

Bred to: **FEDDES PATRIOT D207 (#3539846)**

Due Date: 1/20/18

This Blockana female is a granddaughter of 041 who did a great job at Feddes Red Angus before selling her to Wildcat Creek as a 10-year-old. D61 comes from a long line of near-perfect-uddered cows. Her maternal sister was the NILE futurity champion and high seller in 2014 to Mike Karweik, who then sold half of her to C Bar Red Angus.

RA50K
A GENESIS PRODUCT



FEDDES LAKINA X113-D1

Birth Date:
1/14/16

Reg. #
3539665

Category:
100% 1A

BJR MAKE MY DAY 981
BIEBER MAKE MIMI 7249
BIEBER SIRENA 6708

BJR EASY RIDER 781
BJR TOW KANA 117-710

BIEBER IMPACT 4399
BIEBER MIMI 4227

RED SIX MILE SAKIC 832S

RED SIX MILE AVIATOR 217P
RED SIX MILE SIERA 257P

FEDDES LAKINA X113
FEDDES LAKINA 310

LCHMN GRANDCANYON 1244G
FEDDES LAKINA 954

HB	GM	CED	BW	WW	YW	M	ME	HPG	CEM	ST	MARB	YG	CW	REA	FAT
93	49	3	-0.8	57	80	25	2	9	0	12	0.51	-0.09	16	0.17	-0.02

Bred to: **FEDDES LIBERTY D210 (#3539663)**

Due Date: 4/24/18

Mimi x Lakina cow family should make great cows. Her granddam is Feddes Lakina 310, Big Sky R9's mother. Her dam is X113 who is super fertile and sound footed with a near perfect udder. We have seven of these Mimi x 113 breed heifers, so we are letting two go in this sale. Full sister sells as Lot 30, dam sells as Lot 31.



Lot 80



DDRA PRINCESS 5014

Birth Date:
1/15/15

Reg. #
3557485

Category:
100% 1A

LJC LANCER 806
LJC MISSION STATEMENT P27
LJC HANNAH 106

BECKTON LANCER T A664
LJC HB LIZZIE 606

HOLDEN HI HO 753
LJC KJ JAMIE 516

MLK CRK TITLEIST 4158

VGW TITLEIST 1106
MLK CRK SHEBA 079

GMRA 676
GMRA PRINCESS 633

LEACHMAN BETTER HVY8041
GMRA PRINCESS 910

HB	GM	CED	BW	WW	YW	M	ME	HPG	CEM	ST	MARB	YG	CW	REA	FAT
100	51	5	-1.5	59	96	20	10	11	2	10	0.55	-0.14	25	0.43	-0.03

Bred to: **BIEBER FAF ROLLIN DEEP B627 (#1709419)**

Due Date: 3/8/18

This young dam's maternal pedigree is long and deep. Her own dam is now 11 years old and always calves at the front end of the herd. 5014's Granddam raised 11 calves over her lifetime with an MPPA of 104.4. She is an easy-moving cow with a nice udder and plenty of milk. She is bred to Bieber FAF Rollin Deep B627 (1709419) due early March with a bull calf.



Lot 81



GMRA MESA MAID 528

Birth Date:
1/15/15

Reg. #
3467040

Category:
100% 1A

BIEBER ROUGH RIDER 10712
BIEBER ROOSEVELT W384
BIEBER SHEBA 9602

BASIN TREND SETTER 6074
BIEBER ADELLE 8958

C A FUTURE DIRECTION 5321
BIEBER SHEBA 5537

LJC MISSION STATEMENT P27

LJC LANCER 806
LJC HANNAH 106

GMRA MESA MAID 292
GMRA MESA MAID 993

LCB HOSS A444N
GMRA MESA MAID 724

HB	GM	CED	BW	WW	YW	M	ME	HPG	CEM	ST	MARB	YG	CW	REA	FAT
119	49	6	-1.7	50	75	21	-3	13	4	12	0.58	0.04	13	0.21	0.04

Bred to: **GMRA STETSON 2240 (#1525314)**

Due Date: 3/3/18

This young female is off to a great start! Just look at that heifer calf at her side – and it all started with a 68# birth weight! She comes from a long line of performance-minded females. Her dam is Lot 122 and turned in a heifer calf with a 105 WR this year. Her granddam sold to Buee Cattle Company in our 2015 Big Sky Elite sale and has gone on to produce top end calves, with an MPPA of 105.6. All of this maternal power is combined with a solid set of numbers with two-thirds of them in the top 54% or higher.





Lot 82



GMRA TOWKANA 529

Birth Date:
1/16/15

Reg. #
3467075

Category:
100% 1A

LJC MISSION STATEMENT P27
GMRA STETSON 2240
GMRA VENICE 359

LJC LANCER 806
LJC HANNAH 106
BASIN HOB0 79E
GMRA VENICE 146

MESSMER PACKER S008
GMRA TOWKANA 365
GMRA TOWKANA 016

MESSMER JOSHUA 019P
MESSMER MILLIE 124P
GMRA SECRET MISSION 8258
GMRA TOWKANA 570

HB	GM	CED	BW	WW	YW	M	ME	HPG	CEM	ST	MARB	YG	CW	REA	FAT
156	50	2	0.9	78	129	21	8	11	4	18	0.09	0.03	48	0.41	0

Bred to: **GMRA TESLA 6214 (#3538390)**

Due Date: 4/29/18

Here is a beautiful deep-cherry-red Stetson daughter with a super nice structure and muscle pattern. She has a breed-leading set of numbers with six in single digits including HB index, WW, YW, Stay, CW and REA.



Lot 83



DKK HARMONY 549

Birth Date:
1/27/15

Reg. #
3486442

Category:
100% 1A

CCF GOLD BAR 0251
RHRA GOLD RUSH 402 17T
RHRA MATTIE CHEY 019 402P

LCHMN GOLD ROBBER 1909E
GMRA PRINCESS 720
LCC CHEYENNE B221L
RHRA ROB 734 019

C-T GRAND STATEMENT 1025
DKK HARMONY 274
DKK HARMONY 636

LJC MISSION STATEMENT P27
C-T MISS PAN 0760
DKK ADDICTION N10
DKK HARMONY 532

HB	GM	CED	BW	WW	YW	M	ME	HPG	CEM	ST	MARB	YG	CW	REA	FAT
73	49	1	0.7	57	89	33	2	10	5	8	0.54	0	24	0.22	0

Bred to: **DKK RUMBLE 6020 (#3533210)**

Due Date: 3/6/18

This fancy lady earned a 104 MPPA on her first time out. No surprise when you look at her pedigree – we absolutely love her mama (also 104 MPPA). This cow family has the ability to add style, performance and carcass traits to your program. 104 MPPA on one heifer calf WR: 109. High milk and carcass traits.



Lot 84



DKK HARMONY 504

Birth Date:
1/17/15

Reg. #
3486506

Category:
100% 1A

5L NORSEMAN KING 2291
DKK MAJESTY 362
DKK DIXIE 603

VGW KING OF THE WEST
NORSEMAN 1312 PJM

MESSMER PACKER S008
DKK HARMONY 9060
DKK HARMONY 636

LCC CHEYENNE B221L
DKK DIXIE M04
MESSMER JOSHUA 019P
MESSMER MILLIE 124P
DKK ADDICTION N10
DKK HARMONY 532

HB	GM	CED	BW	WW	YW	M	ME	HPG	CEM	ST	MARB	YG	CW	REA	FAT
71	49	5	0	61	93	22	5	10	2	8	0.46	-0.05	25	0.46	0.01

Bred to: **PIE ONE OF A KIND 510 (#3503311)**

Due Date: 2/25/18

Loaded with carcass traits; and would you look at that heifer (out of PIE ONE OF A KIND 510) on this young cow's side. We're not sure if it's a heifer or not; but Harmony 504 is carrying the same service for a 2018 baby.



Lot 85



DKK BLOSSOM 510

Birth Date:
1/18/15

Reg. #
3486501

Category:
100% 1A

BECKTON JULIAN GG B571
HXC CONQUEST 4405P
HXC ELLIE MAY MA638

BKT JULIAN 7526 G
BKT MARTA 9A13 JL
BFCK CHEROKEE CNYN 4912
HXC 529E

C-T DKK DUKE 1100
DKK BLOSSOM 375
DKK BLOSSOM 027

FRITZ JUSTICE 8013
GMRA ANGIE ROSE 944
FEDDES BIG SKY R9
DKK BLOSSOM 8018

HB	GM	CED	BW	WW	YW	M	ME	HPG	CEM	ST	MARB	YG	CW	REA	FAT
128	52	11	-4.7	65	103	27	3	11	3	11	0.46	0.03	24	0.2	0.01

Bred to: **PIE ONE OF A KIND 510 (#3503311)**

Due Date: 2/25/18

This young, moderate-framed female is boasting 11 EPDs in the top one-third of the breed and eight in the top 25%. She tops the charts on calving ease, performance and carcass traits. Mated to dark, high-performance PIE ONE OF A KIND 510, I can only imagine the possibilities.



Lot 86



C-T COPPER QUEEN 5020

Birth Date:
1/24/15

Reg. #
3471514

Category:
100% 1A

BECKTON NEBULA P P707
BROWN JYJ REDEMPTION Y1334
JYJ MS JOLENE W16

BECKTON NEBULA M045
BECKTON LANA M809 EP
LJC MISSION STATEMENT P27
HXC JOLENE R548

C-T DKK DUKE 1100
C-T COPPER QUEEN 3035
C-T COPPER QUEEN 0833

FRITZ JUSTICE 8013
GMRA ANGIE ROSE 944
FEDDES BIG SKY R9
C-T COPPERQUEEN 0645

HB	GM	CED	BW	WW	YW	M	ME	HPG	CEM	ST	MARB	YG	CW	REA	FAT
142	52	10	-3	64	102	30	3	10	5	13	0.61	-0.03	27	0.34	0

Bred to: **C-T EXCEPTIONAL 5015 (#3471517)**

Due Date: 3/20/18

Powerful Redemption daughter from the very maternal Copper Queen cow family. Solid individual performance with 104 WR and 103 YR. 10 traits in the top 25%. Don't miss this big-bodied young cow with a HB and GM top 7%.



Lot 87



C-T LASS 5058

Birth Date:
2/2/15

Reg. #
3471568

Category:
100% 1A

RED CROWFOOT OLE'S OSCAR
FEDDES OSCAR X28
FEDDES SLEEK 806

MLK CRK CUB 722
RED CROWFOOT OMEGA 9179J
BIEBER ROMERO 9136
FEDDES SLEEK 2S

5L NORSEMAN KING 2291
C-T LASS 0920
C-T MISS LASS 411

VGW KING OF THE WEST
NORSEMAN 1312 PJM
BFCK CHEROKEE CNYN 4912
TKF LIGHTNING LASS 2126

HB	GM	CED	BW	WW	YW	M	ME	HPG	CEM	ST	MARB	YG	CW	REA	FAT
102	51	9	-2.4	61	101	21	-1	9	3	9	0.45	-0.02	27	0.2	-0.01

Bred to: **PCHFRK PRIME 1323 (#1601273)**

Due Date: 4/10/18

Solid young X28 daughter with good milk and lots of years left in her. These X28 cows are making great females and 5058 is no exception. She comes with a quiet disposition and sound feet and udder.



Brown JYJ Redemption Y1334, grandsire



FEDES LARKABA B19-D77

Birth Date:
2/11/16

Reg. #
3539836

Category:
100% 1A

BROWN JYJ REDEMPTION Y1334
FEDES SILVER BOW B226
FEDES LAKINA Y17

FEDES CONQUEST Y34
FEDES LARKABA Z58 B19
FEDES LARKABA Z58

BECKTON NEBULA P P707
JYJ MS JOLENE W16
5L HOBDO DESIGN 273-7047
FEDES LAKINA 9194
HXC CONQUEST 4405P
FEDES BLOCKANA 429
FEDES OSCAR X28
FEDES LARKABA X74

HB	GM	CED	BW	WW	YW	M	ME	HPG	CEM	ST	MARB	YG	CW	REA	FAT
141	53	10	-2.8	65	109	30	-1	14	7	11	0.65	-0.07	31	0.26	-0.03

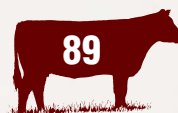
Bred to: **PIE ONE OF A KIND 510 (#3503311)**

Due Date: 1/20/18

Notice the calving ease here without giving up growth, maternal and carcass EPDs. We breed for balance and she certainly covers all the bases. The bulls to mate her to are numerous because you don't have to fix something that is out of balance.



Lot 89



FEDES LAKINA B40-D78

Birth Date:
2/11/16

Reg. #
3539805

Category:
100% 1A

HXC CONQUEST 4405P
FEDES CONQUEST Y34
FEDES BLOCKANA 429

FEDES OSCAR X28
FEDES LAKINA 91S B40
FEDES LAKINA 91S

BECKTON JULIAN GG B571
HXC ELLIE MAY MA638
FEDES REBEL 011
FEDES BLOCKANA 891
RED CROWFOOT OLE'S OSCAR
FEDES SLEEK 806
SUNR GRAND CHEROKEE 909N
FEDES LAKINA 308

HB	GM	CED	BW	WW	YW	M	ME	HPG	CEM	ST	MARB	YG	CW	REA	FAT
124	50	8	0.3	75	122	32	2	11	5	12	0.22	0.09	43	0.09	-0.01

Bred to: **FEDES LIBERTY D210 (#3539663) OR**
FEDES LINCOLN Z79-B202 (#1687198)

Due Date: 3/5/18

D78 is a high-performance female with a 110 WR, 111 YR, and EPDs to back it up, along with excellent calving ease. Her granddam is the dam of Feddes Bobcat A230, used heavily at Green Mountain Red Angus. This heifer has a birthmark on her back leg.



Lot 90



FEDES BLOCKANA 9158-D87

Birth Date:
2/15/16

Reg. #
3539670

Category:
100% 1A

C-T DKK DUKE 1100
C-T ROYAL DUKE 4090
C-T BLOCKANA 1042

FEDES BIG SKY R9
FEDES BLOCKANA 9158
FEDES BLOCKANA 7174

FRITZ JUSTICE 8013
GMRA ANGIE ROSE 944
BIEBER MAKE MIMI 7249
C-T BLOCKANA 0837
BIEBER MAKE MIMI 7249
FEDES LAKINA 310
SUNR GRAND CHEROKEE 909N
FEDES BLOCKANA 182

HB	GM	CED	BW	WW	YW	M	ME	HPG	CEM	ST	MARB	YG	CW	REA	FAT
108	51	4	-0.6	84	127	25	3	13	2	10	0.38	-0.03	44	0.43	-0.01

Bred to: **FEDES SILVER B90-D308 (#3539819)**

Due Date: 1/16/18

D87 is a bigger framed Royal Duke daughter out of a Big Sky daughter with a near perfect body type, udder, and feet along with a big structure. WR 112, YR 111. She has 11 traits in the top 30% of the breed.





DDRA CAMEO 6024

Birth Date:
2/3/16

Reg. #
3558133

Category:
100% 1A

BJR JR 107
GMRA MINOTAURO 3104
GMRA LENA 108

GMRA LARAMIE 5110
DDRA CAMEO 2006
DKK CAMEO P66

LMB JOHNY REB 091
BJR TIDY BEE 677-6186

BASIN HOBO 79E
GMRA LENA 944

LCC CHEYENNE B221L
GMRA LAKOTA 341

DKK WESTERN LIMIT M19
DKK CAMEO M17

HB	GM	CED	BW	WW	YW	M	ME	HPG	CEM	ST	MARB	YG	CW	REA	FAT
101	48	0	-0.1	67	99	32	9	13	4	12	0.27	0.07	29	-0.22	-0.03

Bred to: **FEDDES BRUNSWICK D202 (#3539689)**

Due Date: **3/6/18**

Here is a very feminine, smooth-made, phenotypically correct Minotauro daughter. Yes, older genetics, but the Minotauro females are easy-fleshing, highly productive cattle. She should mature out to be a long-bodied, moderate-framed cow. Due with an early March Brunswick calf, Cameo 6024 has a bright future ahead of her.



GMRA LARKABA 642

Birth Date:
1/16/16

Reg. #
3538371

Category:
100% 1A

BECKTON NEBULA P P707
BROWN JYJ REDEMPTION Y1334
JYJ MS JOLENE W16

BIEBER GOLDBAR Y379
GMRA LARKABA 413
GMRA LARKABA 296

BECKTON NEBULA M045
BECKTON LANA M809 EP

LJC MISSION STATEMENT P27
HXC JOLENE R548

LACY GOLD BAR 8123
BASIN PRIMROSE 2043

C-T GLACIER BERRY 1021
GMRA LARKABA 316

HB	GM	CED	BW	WW	YW	M	ME	HPG	CEM	ST	MARB	YG	CW	REA	FAT
137	52	7	-2	65	105	25	-1	11	5	13	0.67	0.07	30	-0.03	-0.01

Bred to: **FEDDES BRUNSWICK D202 (#3539689)**

Due Date: **4/1/18**

This Redemption daughter has the potential to do it all. She has the phenotype of the Roosevelt daughters and just a super solid EPD profile. When looking across the board you just keep seeing percentile ranks in the top half of the breed – a total of 12 numbers in the top 41%! Worry-free genetics from birth to growth to marbling.



Feddes Red Pack Y84 B217, sire



DKK DIXIE 6048

Birth Date:
1/27/16

Reg. #
3533239

Category:
100% 1A

BROWN JYJ REDEMPTION Y1334
FEDDES RED PACK Y84 B217
FEDDES SLEEK Y84

DKK POWER PACK 236
DKK DIXIE 453
DKK DIXIE P06

BECKTON NEBULA P P707
JYJ MS JOLENE W16

MESSMER PACKER S008
FEDDES SLEEK 2S

MESSMER PACKER S008
DKK MATTELINE 8014

GLACIER CHATEAU 744
DKK DIXIE 901

HB	GM	CED	BW	WW	YW	M	ME	HPG	CEM	ST	MARB	YG	CW	REA	FAT
108	52	6	-2.1	65	111	22	6	10	5	10	0.45	0.01	33	0.4	0.01

Bred to: **DKK PRECISION 6034 (#3533222)**

Due Date: **3/17/18**

Packed with performance and carcass traits, this Dixie chick boasts the top 11% of the breed for yearling; top 12 % for REA and GM and top 14% CW.



Lot 94



DKK RAMBLIN RUBY 6078

Birth Date:
2/1/16

Reg. #
3533266

Category:
100% 1A

ANDRAS IN FOCUS B152
ANDRAS NEW DIRECTION R240
ANDRAS KURUBA B111

GLACIER CHATEAU 744
DKK RAMBLIN RUBY 601
DKK RAMBLIN RUBY P65

MYTTY IN FOCUS
ANDRAS PINETA B91

MORGANS DIRECTION 111 9901
ANDRAS KURUBA B71

LMAN KING ROB 8621
GLACIER REBALA

DKK OUTLOOK L13
CK RAMBLIN RUBY 228

HB	GM	CED	BW	WW	YW	M	ME	HPG	CEM	ST	MARB	YG	CW	REA	FAT
49	50	2	-2.5	51	89	27	0	11	7	3	0.47	0.12	20	0	0.03

Bred to: **FRITZ AMBUSH 12D (#3543988)**

Due Date: **3/12/18**

A little smaller framed, this beauty stems from the great Ramblin Ruby family. Her mama is one of my all-time favorite cows – loads of capacity, great disposition, excellent udder and feet.



Lot 95



C-T BLOCKANA 6100

Birth Date:
2/18/16

Reg. #
3536096

Category:
100% 1A

ANDRAS IN FOCUS B152
ANDRAS NEW DIRECTION R240
ANDRAS KURUBA B111

BIEBER MAKE MIMI 7249
C-T BLOCKANA 1042
C-T BLOCKANA 0837

MYTTY IN FOCUS
ANDRAS PINETA B91
MORGANS DIRECTION 111 9901
ANDRAS KURUBA B71
BJR MAKE MY DAY 981
BIEBER SIRENA 6708
4L SUPER VISION R2292
CTDB BLOCKANA 810

HB	GM	CED	BW	WW	YW	M	ME	HPG	CEM	ST	MARB	YG	CW	REA	FAT
76	50	4	-1.9	59	95	28	1	7	5	8	0.43	0.01	24	0.12	0

Bred to: **FEDDES EPIC C401 (#1742994)**

Due Date: 2/26/18

Powerful, eye-appealing New Direction heifer stemming from one of our great donor cows, C-T Blockana 1042. These heifers have mother cow written all over them and may go on to be donors themselves someday. 6100 will take you to the pay window with this exciting Feddes Epic calf mating. Dam has 107.3 MPPA.



Lot 96



C-T MISS PAN 6077

Birth Date:
2/6/16

Reg. #
3535249

Category:
100% 1A

ANDRAS IN FOCUS B152
ANDRAS NEW DIRECTION R240
ANDRAS KURUBA B111

LJC MISSION STATEMENT P27
C-T MISS PAN 1181
CTDB MISS PAN 227

MYTTY IN FOCUS
ANDRAS PINETA B91
MORGANS DIRECTION 111 9901
ANDRAS KURUBA B71
LJC LANCER 806
LJC HANNAH 106
BJR KING SPREAD 035
CTDB MISS PAN 011

HB	GM	CED	BW	WW	YW	M	ME	HPG	CEM	ST	MARB	YG	CW	REA	FAT
79	50	4	-1.6	56	97	25	-2	11	4	7	0.39	0.02	26	0.22	0.01

Bred to: **FEDDES SAGA C299 (#3469550)**

Due Date: 4/15/18

Beautiful-made, cherry-red New Direction heifer. Stemming from the very maternal Miss Pan cow family, producing the great C-T Grand Statement 1025 bull. If you like attractive cattle with good dispositions, take a look at this heifer.



Lot 97



C-T MISS PAN 6054

Birth Date:
2/1/16

Reg. #
3535217

Category:
100% 1A

C-T DKK DUKE 1100
C-T ROYAL DUKE 4090
C-T BLOCKANA 1042

FEDDES BIG SKY R9
C-T MISS PAN 0920
C-T MISS PAN 424

FRITZ JUSTICE 8013
GMRA ANGIE ROSE 944
BIEBER MAKE MIMI 7249
C-T BLOCKANA 0837
BIEBER MAKE MIMI 7249
FEDDES LAKINA 310
CTDB RED LIGHTENING 228
CTDB BOZO'S GAL 605

HB	GM	CED	BW	WW	YW	M	ME	HPG	CEM	ST	MARB	YG	CW	REA	FAT
98	49	5	-1.9	66	94	24	4	11	3	10	0.43	-0.04	23	0.29	0

Bred to: **C-T RED ROCK 5033 (#3471552)**

Due Date: 1/20/18

Royal Duke on top of a Big Sky dam makes 6054 a maternal machine. Moderate frame with a beautiful feminine phenotype, balanced EPDs and extra performance with 104 WR. Dam has a 101 MPPA.



Lot 98



C-T MARIGOLD 6049

Birth Date:
1/31/16

Reg. #
3535282

Category:
100% 1A

C-T DKK DUKE 1100
C-T ROYAL DUKE 4090
C-T BLOCKANA 1042

LOOSLI RIGHT KIND 107
C-T MARIGOLD 3008
C-T MARIGOLD 127

FRITZ JUSTICE 8013
GMRA ANGIE ROSE 944
BIEBER MAKE MIMI 7249
C-T BLOCKANA 0837
BUF CRK THE RIGHT KIND U199
MISS LL DESIGN 949
BUF CRK LANCER R017
BUF CRK MARIGOLD L231

HB	GM	CED	BW	WW	YW	M	ME	HPG	CEM	ST	MARB	YG	CW	REA	FAT
129	51	7	-2.2	72	113	23	2	11	6	12	0.39	0.05	33	0.19	0.01

Bred to: **C-T RED ROCK 5033 (#3471552)**

Due Date: 1/20/18

Big, solid Royal Duke heifer with great individual performance posting 103 WR and YR with WW and YW both in the top 9% EPDs. These Marigold cows have come to the top time and time again and Marigold 6049 will be no exception with loads of volume and nice dispositions.



Lot 99



FEDDES BLOCKANA 7113-D86

Birth Date:
2/15/16

Reg. #
3539644

Category:
100% 1A

FEDDES CONQUEST Y34
FEDDES CONRAD A208
FEDDES LAKINA Y17

FEDDES BIG SKY R9
FEDDES BLOCKANA 7113
FEDDES BLOCKANA 062

HXC CONQUEST 4405P
FEDDES BLOCKANA 429
5L HOBO DESIGN 273-7047
FEDDES LAKINA 9194
BIEBER MAKE MIMI 7249
FEDDES LAKINA 310
BUF CRK BARNEY 3474
BJR BLOCKANA 502-5185

HB	GM	CED	BW	WW	YW	M	ME	HPG	CEM	ST	MARB	YG	CW	REA	FAT
119	49	5	-0.8	71	105	29	3	15	6	11	0.25	0.09	31	-0.08	-0.01

Bred to: **FEDDES LIBERTY D210 (#3539663)**

Due Date: 3/31/18

This bred heifer is a Feddes Conrad A208 daughter. Conrad is Lakina Y17's first calf. Y17 has earned a 106 MPPA, her first three sons went to registered herds. D86's dam is a deep-ribbed, easy-fleshing Big Sky daughter with excellent feet, legs and longevity.



Lot 100



FEDDES BLOCKANA Z95-D49

Birth Date:
2/1/16

Reg. #
3539753

Category:
100% 1A

BECKTON EPIC R397 K
LSF SAGA 1040Y
LSF MINOLA T7172 W9041

MESSMER PACKER S008
FEDDES BLOCKANA Z95
FEDDES BLOCKANA R86

BECKTON EPIC K F075
BECKTON KIT F468 JL
FEDDES BIG SKY R9
LSF MINOLA K1279 T7172
MESSMER JOSHUA 019P
MESSMER MILLIE 124P
5L NORSEMAN KING 2291
FEDDES BLOCKANA 899

HB	GM	CED	BW	WW	YW	M	ME	HPG	CEM	ST	MARB	YG	CW	REA	FAT
159	51	8	-2.4	62	97	21	-1	18	3	15	0.65	-0.05	24	0.49	0.02

Bred to: **FEDDES SILVER BOW B226 (#1687147)**

Due Date: 1/20/18

D49 is a moderate-framed Saga daughter that comes from the Blockana cow family. Dam's MPPA 102.2.





Lot 101



FEDDES SILVER B62-D22

Birth Date:
1/25/16

Reg. #
3539844

Category:
100% 1A

BROWN JYJ REDEMPTION Y1334
FEDDES SILVER BOW B226
FEDDES LAKINA Y17

C-T DKK DUKE 1100
FEDDES BLOCKANA R11 B62
FEDDES BLOCKANA R11

BECKTON NEBULA P P707
JYJ MS JOLENE W16
5L HOB0 DESIGN 273-7047
FEDDES LAKINA 9194
FRITZ JUSTICE 8013
GMRA ANGIE ROSE 944
5L NORSEMAN KING 2291
FEDDES BLOCKANA 173

HB	GM	CED	BW	WW	YW	M	ME	HPG	CEM	ST	MARB	YG	CW	REA	FAT
131	51	7	0.2	75	125	28	-4	13	5	12	0.38	-0.06	45	0.64	0

Bred to: **FEDDES LIBERTY D210 (#3539663)**

Due Date: 2/22/18

D22 has a performance pedigree and her WR 106 and YR 106 prove it. The Silver Bow progeny are working well in many herds. Note the combination of Lakina Y17 and Blockana R11, also take note of her incredibly balanced EPD profile.



Feddes Silver Bow B226



FEDDES LAKINA 310 A59

Birth Date:
2/7/13

Reg. #
1607857

Category:
100% 1A

ET Calf: **FEDDES SILVER BOW B226 (#1687147) X**
TNTS MISS U147 (#1268964)

Due Date: 7/28/18

BROWN JYJ REDEMPTION Y1334
FEDDES SILVER BOW B226
FEDDES LAKINA Y17

BECKTON HUSTLER S426 C2
TNTS MISS U147
TBS MS MILLINEUM 4269

BECKTON NEBULA P P707
JYJ MS JOLENE W16
5L HOB0 DESIGN 273-7047
FEDDES LAKINA 9194
BECKTON HUSTLER C2 L079
BKT LARKEISA M288 CK
TBS MR MILLINEUM 7593
TBS MS RAMBO 512

Projected EPDs:

HB	GM	CED	BW	WW	YW	M	ME	HPG	CEM	ST	MARB	YG	CW	REA	FAT
		10	-1.6	68	110	21	-1	14	6	12	0.38	-0.08	34	0.24	-0.04

A59 is a pregnant recip. U147 is one of the most massive Red Angus cows I have ever seen, yet she is clean fronted and moves like a cat. Silver Bow has done a great job siring cattle that are extremely balanced with 12 traits in the top 25%, and none over 40%.



Lot 103



GMRA ANNE 538

Birth Date:
1/17/15

Reg. #
3467074

Category:
100% 1A

LACY GOLD BAR 8123
BIEBER GOLDBAR Y379
BASIN PRIMROSE 2043

GMRA MAKE IT EASY 8226
GMRA ANNE 364
GMRA ANNE 444

CCF GOLD BAR 0251
LACY MS CHEROKEE 557P
BFCK CHEROKEE CNYN 4912
BASIN PRIMROSE 0854
BIEBER MAKE MIMI 7249
GMRA LAKOTA 625
GMRA VERMILLION 796
GMRA ANNE 837

HB	GM	CED	BW	WW	YW	M	ME	HPG	CEM	ST	MARB	YG	CW	REA	FAT
104	48	3	-1	64	86	21	1	7	2	13	0.49	-0.03	19	0.04	-0.02

Bred to: **HXC DECLARATION 5504C (#3494198)**

Due Date: 3/30/18

Here is a great Goldbar x Make It Easy combination. Smooth made with a beautiful muscle pattern. She is off to a great start, weaning her first bull calf with a 105 WR.





Beckton Epic R397 K, sire



GMRA VENICE 565

Birth Date:
1/27/15

Reg. #
3466996

Category:
100% 1A

BECKTON EPIC K F075
BECKTON EPIC R397 K
BECKTON KIT F468 JL

BECKTON EPIC D404
BECKTON BELGA D483 KR
BECKTON JULIAN GG B571
BECKTON KIT A517 NP

GMRA MAKE IT EASY 8226
GMRA VENICE 132
GMRA VENICE 664

BIEBER MAKE MIMI 7249
GMRA LAKOTA 625
GMRA MINOTAURO 3104
GMRA VENICE 384

HB	GM	CED	BW	WW	YW	M	ME	HPG	CEM	ST	MARB	YG	CW	REA	FAT
141	48	5	-1.6	71	107	25	-2	15	3	15	0.1	0.16	31	0.06	0.04

Bred to: **GMRA STETSON 2240 (#1525314)**

Due Date: **3/16/18**

Venice 565 is a nice-made young female who showcases that great Epic x Make It Easy. Eight of her numbers are in the top 25% of the breed or higher, combining better-than-average calving numbers with an emphasis on growth.



Lot 105



DKK DAZZLE 534

Birth Date:
1/24/15

Reg. #
3486479

Category:
100% 1A

BECKTON JULIAN GG B571
HXC CONQUEST 4405P
HXC ELLIE MAY MA638

BKT JULIAN 7526 G
BKT MARTA 9A13 JL
BFCK CHEROKEE CNYN 4912
HXC 529E

RED DMM BRYLOR THUMP 2T
DKK DAZZLE 266
DKK DAZZLE 639

RED NORTHLINE ROB ROY 122K
RED STEN ESSENCE 42G
LSF COMBINATION A301M
DKK DAZZLE L20

HB	GM	CED	BW	WW	YW	M	ME	HPG	CEM	ST	MARB	YG	CW	REA	FAT
77	49	5	-1.2	62	99	14	1	13	3	7	0.41	0.13	27	-0.07	0.01

Bred to: **DKK CAPTAIN JACK 6015 (#3533205)**

Due Date: **4/9/18**

As a first-calf heifer, this young lady has already claimed a 103 MPPA. Her top-notch bull calf tipped the scales with a 107 weaning ratio. DKK Dazzle 534 is a fancy, deep-red female with a beautiful udder. She is ready to go to work for you.



Lot 106



DKK HARMONY 587

Birth Date:
2/5/15

Reg. #
3486409

Category:
100% 1A

CCF GOLD BAR 0251
RHRA GOLD RUSH 402 17T
RHRA MATTIE CHEY 019 402P

LCHMN GOLD ROBBER 1909E
GMRA PRINCESS 720
LCC CHEYENNE B221L
RHRA ROB 734 019

GLACIER CHATEAU 744
DKK HARMONY 8008
DKK HARMONY 636

LMAN KING ROB 8621
GLACIER REBALA
DKK ADDICTION N10
DKK HARMONY 532

HB	GM	CED	BW	WW	YW	M	ME	HPG	CEM	ST	MARB	YG	CW	REA	FAT
75	49	2	-0.8	51	80	34	6	10	6	8	0.38	-0.09	17	0.33	-0.01

Bred to: **DKK RUMBLE 6020 (#3533210)**

Due Date: **5/17/18**

Fancy, Fancy, Fancy – this Gold Rush daughter is capacious yet ultra-feminine with a gorgeous udder. Out of a fantastic cow family – love her mama and her grand-mama; also loved her great and great-great grand dams. As you can tell, this cow family runs strong in the Klompfen herd.

Bred Females

BIG SKY ELITE Female Sale



FEDDES SLEEK 806-C26

Birth Date:
1/27/15

Reg. #
3469520

Category:
100% 1A

BECKTON EPIC R397 K
LSF SAGA 1040Y
LSF MINOLA T7172 W9041

BECKTON EPIC K F075
BECKTON KIT F468 JL

FEDDES BIG SKY R9
LSF MINOLA K1279 T7172

BIEBER ROMERO 9136
FEDDES SLEEK 806
FEDDES SLEEK 2S

BUF CRK ROMEO L081
BIEBER MELLSSIE 8337
BIEBER MAKE MIMI 7249
FEDDES SLEEK 446

HB	GM	CED	BW	WW	YW	M	ME	HPG	CEM	ST	MARB	YG	CW	REA	FAT
141	51	9	-3.4	67	111	27	-3	13	5	12	0.36	0.1	31	0.06	0.01

Bred to: **FEDDES LINCOLN Z79-B202 (#1687198)**

Due Date: 5/8/18

C26 is backed by two of our best ever donor cows, 2S and 806. Look at the balanced set of EPDs, HB 8%, GM 9%, CED 13%, BW 15%, WW 16%, YW 8%, Milk 14%, ST 17%. If she was bred earlier she would definitely stay in our herd.



FEDDES LAKINA X2-C4

Birth Date:
1/18/15

Reg. #
3469616

Category:
100% 1A

C-T GRAND STATEMENT 1025
FEDDES GRANITE Z132
FEDDES SLEEK 2S

LJC MISSION STATEMENT P27
C-T MISS PAN 0760

BIEBER MAKE MIMI 7249
FEDDES SLEEK 446

RED SIX MILE SAKIC 832S
X2 FRI
FEDDES LAKINA 453

RED SIX MILE AVIATOR 217P
RED SIX MILE SIERA 257P
LCHMAN LITTLE JOHN 1509D
FEDDES LAKINA 106

HB	GM	CED	BW	WW	YW	M	ME	HPG	CEM	ST	MARB	YG	CW	REA	FAT
110	50	6	-3.6	55	81	27	2	12	10	10	0.69	0.01	13	0.12	0.01

Bred to: **PIE ONE OF A KIND 510 (#3503311)**

Due Date: 3/11/18

C4 comes from one of my favorite cow families. Her granddam and great granddam are well proven cows that are super deep, easy fleshing with hear perfect feet, legs and udder. They are the kind that never go out of style.



Lot 109



C-T CHRIS 3015

Birth Date:
1/24/13

Reg. #
1606207

Category:
100% 1A

BECKTON JULIAN GG B571
HXC CONQUEST 4405P
HXC ELLIE MAY MA638

BKT JULIAN 7526 G
BKT MARTA 9A13 JL

BFCR CHEROKEE CNYN 4912
HXC 529E

GLACIER CHATEAU 744
C-T CHRIS 1128
C-T CHRIS 426

LMAN KING ROB 8621
GLACIER REBALA

FCC RAMBO 502
LARSON CRIS 926

HB	GM	CED	BW	WW	YW	M	ME	HPG	CEM	ST	MARB	YG	CW	REA	FAT
119	50	8	-3.8	52	81	22	-2	12	5	11	0.43	-0.01	12	0.13	0.01

Bred to: **C-T EXCEPTIONAL 5015 (#3471517)**

Due Date: 3/10/18

This Chris cow with make you stand up and take note! She comes from the very maternal Chris cow family and also one of the best female making bull in the breed, Conquest. She has solid epds with HB top 21% and GM top 26%. Her phenotype, feet and udder are second to none.



Lot 110



C-T LINSEY 3030

Birth Date:
1/27/13

Reg. #
1606150

Category:
100% 1A

LJC MISSION STATEMENT P27
C-T GRAND STATEMENT 1025
C-T MISS PAN 0760

LJC LANCER 806
LJC HANNAH 106

LCHMN GRANDCANYON 1244G
CTDB HOBO'S GAL 803

BIEBER MAKE MIMI 7249
C-T LINSEY 0815
S. R. GRAND LINSEY

BJR MAKE MY DAY 981
BIEBER SIRENA 6708

LCHMN GRANDCANYON 1244G
S.R. ROBS LINSEY

HB	GM	CED	BW	WW	YW	M	ME	HPG	CEM	ST	MARB	YG	CW	REA	FAT
89	50	2	0	69	107	23	1	11	5	9	0.55	0.09	33	0.17	0.02

Bred to: **C-T EXCEPTIONAL 5015 (#3471517)**

Due Date: 3/10/18

This Grand Statement daughter will catch your eye with all of her power and presence. She is the daughter of one of the lead off cows of this sale, C-T Linsey 0815. She has big-time personal performance with 107 WR and 111 YR. MPPA: 100



Lot 111



GMRA REBALASS 277

Birth Date:
1/29/12

Reg. #
1525307

Category:
100% 1A

LJC MISSION STATEMENT P27
GMRA SECRET MISSION 8258
GMRA LAKOTA 341

LJC LANCER 806
LJC HANNAH 106

BASIN HOBO 79E
GMRA LAKOTA 947

BUF CRK BARNEY 3474
GMRA REBALASS 328
GMRA REBALASS 028

BUF CRK BARON 2678
OLE SUNFLOWER 359 PB08

LMAN KING ROB 8621
GMRA REBALASS 916

HB	GM	CED	BW	WW	YW	M	ME	HPG	CEM	ST	MARB	YG	CW	REA	FAT
117	48	3	-0.9	58	94	25	8	11	6	13	0.15	0.06	25	-0.06	-0.01

Bred to: **FEDDES BOBCAT A230 (#1607674)**

Due Date: 3/2/18

Just take a look at the muscling and rear quarter featured on this Secret Mission daughter! She is deep and solid with a ton of length. She features an MPPA of 101.5 on four calves. Her calves are below average at birth yet she features an average WR of 102 and an average YR of 105. Look for calves with strong growth in combination with a powerful phenotype.



GMRA INDIGO 424

Birth Date:
1/14/14

Reg. #
1681580

Category:
100% 1A

FRITZ JUSTICE 8013
GMRA PEACEMAKER 1216
GMRA THELMA 930

VGW JUSTICE 614
FRITZ CHRIS 6047

LJC MISSION STATEMENT P27
GMRA THELMA 319

GMRA MAKE IT EASY 8226
GMRA INDIGO 236
GMRA INDIGO 615

BIEBER MAKE MIMI 7249
GMRA LAKOTA 625

LCC CHEYENNE B221L
GMRA INDIGO 230

HB	GM	CED	BW	WW	YW	M	ME	HPG	CEM	ST	MARB	YG	CW	REA	FAT
126	51	4	0.4	79	121	24	4	7	6	13	0.6	0.1	42	0.16	0.01

Bred to: **FEDDES BOBCAT A230 (#1607674)**

Due Date: 3/18/18

Here is a nice Peacemaker daughter that is off to a great start here at GMRA. With only 2 calves she is already posting an MPPA of 101.1 with an average WR of 102 and a YR of 101. She'll be easy to breed with a top notch set of numbers. WW and YW in the top 2% and a CW in the top 3% showcase a total of 10 EPDs in the top 1/3rd of the breed or higher.



GMRA LARKOBA 421

Birth Date:
1/12/14

Reg. #
1681641

Category:
100% 1A

MESSMER PACKER S008
GMRA TRILOGY 0226
GMRA LAKOTA 625

MESSMER JOSHUA 019P
MESSMER MILLIE 124P

GLACIER CHATEAU 744
GMRA LAKOTA 380

LCHMN RED SPREAD 1271F
GMRA LARKOBA 659
GMRA LARKOBA 151

LMAN KING ROB 8621
BJR MATTIE 002-1102

BJR MAKE MY DAY 981
GMRA LARKOBA 649

HB	GM	CED	BW	WW	YW	M	ME	HPG	CEM	ST	MARB	YG	CW	REA	FAT
126	52	7	-3.5	62	100	16	6	11	6	11	0.61	0	24	0.23	0.01

Bred to: **FEDDES BOBCAT A230 (#1607674)**

Due Date: 5/6/18

This young Trilogy daughter has a lifetime of solid production ahead of her. She has produced two heifer calves for us, both of which have been retained. She features a strong number profile with 11 EPDs in the top 34% or higher.



Lot 114



DKK DAZZLE 155

Birth Date:
2/11/11

Reg. #
1427187

Category:
100% 1A

LJC LANCER 806
LJC MISSION STATEMENT P27
LJC HANNAH 106

BECKTON LANCER T A664
LJC HB LIZZIE 606

HOLDEN HI HO 753
LJC KJ JAMIE 516

LSF COMBINATION A301M
DKK DAZZLE 639
DKK DAZZLE L20

LCHMN TOP BRASS 1049H
WHF LASS 27G-29J

BJR JR 107
DKK DAZZLE 939

HB	GM	CED	BW	WW	YW	M	ME	HPG	CEM	ST	MARB	YG	CW	REA	FAT
82	51	0	1.2	77	125	10	11	14	2	8	0.41	0.01	46	0.39	-0.01

Bred to: **LOOSLI MANHATTAN 463 (#1714294)**

Due Date: 3/29/18

I don't know how she does it, but this highly capacious, powerhouse cow brings home the fanciest, soggiest, coolest babies year after year. She claims the top 1% of the breed for Yearling and Carcass weights. No surprise to find her progeny weaning ratio of 103 and progeny yearling ratio of 105. She maintains a 102 MPPA. We can't give enough compliments to her progeny – and I would think that her legacy will continue with her 2018 baby.

Bred Females

BIG SKY ELITE Female Sale



DKK AUBURN 437

Birth Date:
1/27/14

Reg. #
1684394

Category:
100% 1A

RED SSS OLY 554T
VGW VISION 009
VGW 508-HAZY 0832

DKK PRIORITY R07
DKK AUBURN 017
DKK AUBURN R42

RED CROWFOOT OLE'S OSCAR
RED SSS GOLD EDGE 77R
VGW GAME PLAN 508
VGW 744 HAZY 0245
LCC MAJOR LEAGUE A502M
DKK SASSINA M23
GLACIER CHATEAU 744
DKK AUBURN N56

HB	GM	CED	BW	WW	YW	M	ME	HPG	CEM	ST	MARB	YG	CW	REA	FAT
89	49	-2	0.6	63	96	22	7	10	4	11	0.53	0.1	28	0.08	0.02

Bred to: DKK CAPTAIN 434 (#1684399)

Due Date: 2/22/18

Here's an extremely feminine, moderate-framed, cherry-red, fancy mama cow. She consistently raises some of the biggest, soggiest calves and has a balanced set of numbers. Mated to DKK Captain 434; you can expect another excellent baby this coming spring.



FEDDES BLOCKANA Z2

Birth Date:
1/17/12

Reg. #
1516381

Category:
100% 1A

BIEBER MAKE MIMI 7249
FEDDES MONTANA X44
FEDDES BLOCKANA 8121

LSF COMBINATION A301M
FEDDES BLOCKANA 8124
FED'S BLOCKANA 4225

BJR MAKE MY DAY 981
BIEBER SIRENA 6708
5L FOREVER GRAND 5834
FEDDES BLOCKANA 173
LCHMN TOP BRASS 1049H
WHF LASS 27G-29J
BUF CRK HOB0 1961
BJR BLOCKANA 502-5185

HB	GM	CED	BW	WW	YW	M	ME	HPG	CEM	ST	MARB	YG	CW	REA	FAT
78	49	2	-0.4	64	103	19	3	12	5	8	0.35	0.04	31	0.24	0.01

Bred to: 5L ADVANTAGE 2170-165A (#1627167)

Due Date: 3/18/18

This massive, deep-ribbed cow has a 105.8 MPPA. She has one daughter in the herd, one in the replacement pen, and her 2017 bull calf also sired by 165A, went on test at 815# on Oct. 4.



Lot 117



FEDDES LARKABA Z58

Birth Date:
2/12/12

Reg. #
1516438

Category:
100% 1A

RED CROWFOOT OLE'S OSCAR
FEDDES OSCAR X28
FEDDES SLEEK 806

FEDDES ATLAS 12S
FEDDES LARKABA X74
FEDDES LARKABA 50S

MLK CRK CUB 722
RED CROWFOOT OMEGA 9179J
BIEBER ROMERO 9136
FEDDES SLEEK 2S
5L NORSEMAN KING 2291
FEDDES BLOCKANA 472
FEDDES GRAND 430
MPK LARKABA 390

HB	GM	CED	BW	WW	YW	M	ME	HPG	CEM	ST	MARB	YG	CW	REA	FAT
120	51	10	-4.5	53	88	26	0	10	8	10	0.5	-0.03	16	0.14	-0.01

Bred to: PIE ONE OF A KIND 510 (#3503311)

Due Date: 2/26/18

If you are looking for extra calving ease with top 20% HB, 8% GM, 18% Milk, you better take a look at Z58. She's bred to our exciting new herd sire, 510, who is leaving a really good set of calves in several herds.



FEDDES BLOCKANA Z67

Birth Date:
2/22/12

Reg. #
1516396

Category:
100% 1A

RED FINE LINE MULBERRY 26P
FED FLIKK MULBERRY X648
MEADO-WEST STELLA

FEDDES GRAND CHER 7125
FEDDES CAVALIER 9161
FEDDES BLOCKANA 186

RED COMPASS MULBERRY 449M
RED DUS FAYETTE 8G
UBAR GRAND PRIX 102
MISS MFIN MYSTIC M5
SUNR GRAND CHEROKEE 909N
FEDDES OSCE 149
FEDDES ROB 803
FEDDES BLOCKANA 875

HB	GM	CED	BW	WW	YW	M	ME	HPG	CEM	ST	MARB	YG	CW	REA	FAT
84	48	-1	1.6	71	109	23	1	13	4	9	0.1	0.02	37	0.24	0

Bred to: 5L ADVANTAGE 2170-165A (#1627167)

Due Date: 4/20/18

She has one very good Montana X44 daughter in the herd and also one of my favorite replacements by Silver Bow. She would be staying in the herd if she was bred earlier.

2017 NILE Futurity Champion from Feddes Red Angus
42 - Big Sky Elite Female Sale

Cattle sell in catalog order.



C-T MISS PAN 0877

Birth Date:
3/15/08

Reg. #
1235664

Category:
100% 1A

C-T CANYON 429
4L 429 CANYON 37S
MS ADVANCER OF 4L R29N

LSF COMBINATION A301M
C-T MISS PAN 0536
CTDB MISS LOGAN 704

LCHMN GRANDCANYON 1244G
CTDB MISS PAN 011
PERKS ADVANCER 9088
MS HIWOOD HERO 4L 338
LCHMN TOP BRASS 1049H
WHF LASS 27G-29J
GLACIER LOGAN 210
DKK 337

HB	GM	CED	BW	WW	YW	M	ME	HPG	CEM	ST	MARB	YG	CW	REA	FAT
30	49	-3	1	62	90	11	6	11	4	4	0.74	0.13	25	0.12	0.04

Bred to: **C-T EXCEPTIONAL 5015 (#3471517)**

Due Date: **3/25/18**

Big, powerful 4L Canyon daughter, that holds her flesh and always brings in a big calf. She has produced some great daughters and will cross well with this upcoming young herd sire, Exceptional. MPPA: 102.2



C-T HONEST GIRL 2024

Birth Date:
1/27/12

Reg. #
1512449

Category:
100% 1A

LJC MISSION STATEMENT P27
C-T GRAND STATEMENT 1025
C-T MISS PAN 0760

BADLANDS MR BEEF 805
C-T HONEST GIRL 334
CTDB HONEST GIRL 018

LJC LANCER 806
LJC HANNAH 106
LCHMN GRANDCANYON 1244G
CTDB HOBO'S GAL 803
HLH BUSTER 406 603
BADLANDS KEEPSAKE 632
GLACIER LOGAN 210
ASV HONEST GIRL 803

HB	GM	CED	BW	WW	YW	M	ME	HPG	CEM	ST	MARB	YG	CW	REA	FAT
102	50	4	-1.4	58	90	22	5	11	10	9	0.61	0.05	21	0	0

Bred to: **C-T EXCEPTIONAL 5015 (#3471517)**

Due Date: **1/25/18**

Don't miss this powerful Grand Statement daughter. She comes with an eye-catching phenotype and great feet and leg structure. She will make a good cross with the solid C-T Exceptional 5015 (Conquest xX Epic) for a late-January calf.



Jake and Alyssa Feddes tied the knot on July 29



GMRA PRIDSTOM 450

Birth Date:
1/21/14

Reg. #
1681679

Category:
100% 1A

LJC MISSION STATEMENT P27
GMRA STETSON 2240
GMRA VENICE 359

BROWN COMMITMENT S7206
GMRA PRIDSTOM 982
GMRA PRIDSTOM 035

LJC LANCER 806
LJC HANNAH 106
BASIN HOBO 79E
GMRA VENICE 146
LJC LANCER 806
BROWN MS SHAZZAM P7940
LMAN KING ROB 8621
GMRA PRIDSTOM 644

HB	GM	CED	BW	WW	YW	M	ME	HPG	CEM	ST	MARB	YG	CW	REA	FAT
123	50	5	-1.7	66	111	29	10	9	4	13	0.17	0.04	34	0.24	0.01

Bred to: **GMRA TESLA 6214 (#3538390)**

Due Date: **3/25/18**

This young Stetson daughter is out of a nice Commitment dam posting a 104.2 MPPA on six calves. Pridstom 450 raised a nice Feddes Bobcat bull calf this year. She posts a super solid set of numbers, with half in the top 22% of the breed or higher.



Lot 122

GMRA Mesa Maid 993, dam



GMRA MESA MAID 292

Birth Date:
2/4/12

Reg. #
1525420

Category:
100% 1A

LJC LANCER 806
LJC MISSION STATEMENT P27
LJC HANNAH 106

LCB HOSS A444N
GMRA MESA MAID 993
GMRA MESA MAID 724

BECKTON LANCER T A664
LJC HB LIZZIE 606
HOLDEN HI HO 753
LJC KJ JAMIE 516
BLUE RIDGE PONDEROSA
RSLND REBELLA 120-502
MLK CRK TITLEIST 4158
GMRA MESA MAID 502

HB	GM	CED	BW	WW	YW	M	ME	HPG	CEM	ST	MARB	YG	CW	REA	FAT
117	50	4	-1.7	65	102	21	7	11	4	12	0.36	-0.1	28	0.42	-0.01

Bred to: **FEDDES BOBCAT A230 (#1607674)**

Due Date: **4/24/18**

Here is a solid-made, deep, capacious Mission Statement daughter. Her dam sold to Buee Cattle Company in our 2015 Big Sky Elite sale and has gone on to produce top-end calves, with an MPPA of 105.6. Look for this female to do the same as she is just hitting her stride with her 2017 heifer calf posting a 105 WR. A strong EPD profile features nine numbers in the top one-third of the breed or higher.



GMRA PEACHA 013

Birth Date:
1/8/10

Reg. #
1367454

Category:
100% 1A

MESSMER JOSHUA 019P
MESSMER PACKER S008
MESSMER MILLIE 124P

BASIN HOBO 79E
GMRA PEACHA 135
GMRA PEACHA 214

BECKTON JULIAN GG B571
MESSMER PANDORA M186
VGW TOP PICK 130
MESSMER MILLIE 9416
BUF CRK HOBO 2595
DOUBLE FORK 079Z
GMRA EBV 935
WGF MISS PEACHA 86

HB	GM	CED	BW	WW	YW	M	ME	HPG	CEM	ST	MARB	YG	CW	REA	FAT
116	50	9	-4	55	75	23	0	9	6	11	0.56	-0.04	8	0.26	0.02

Bred to: **GMRA STETSON 2240 (#1525314)**

Due Date: 3/6/18

This Peacha dam goes back to the Hobo 79E sire line we like so well. She carries a tremendous EPD profile with 10 numbers in the top one-third of the breed or higher, showcasing maternal and carcass strengths.



Lot 124



DKK WIND SONG 290

Birth Date:
2/26/12

Reg. #
1509806

Category:
100% 1A

LJC MISSION STATEMENT P27
C-T GRAND STATEMENT 1025
C-T MISS PAN 0760

BJR JR 107
DKK WIND SONG R52
DKK WIND SONG 615

LJC LANCER 806
LJC HANNAH 106
LCHMN GRANDCANYON 1244G
CTDB HOBO'S GAL 803
LMB JOHNY REB 091
BJR TIDY BEE 677-6186
FCC RAMBO 502
CK'S MISS PAN 2051

HB	GM	CED	BW	WW	YW	M	ME	HPG	CEM	ST	MARB	YG	CW	REA	FAT
76	48	3	-0.7	55	77	23	5	10	5	8	0.45	-0.01	15	0.06	0

Bred to: **LOOSLI MANHATTAN 463 (#1714294)**

Due Date: 4/4/18

Here's a fancy mama who does everything right – check out her length of body, depth of rib, femininity, along with excellent feet and udder quality. Carrying the Wind Song family name – you can bet your boots you will like her. Mated to Loosli Manhattan – I can't give enough accolades to this sire; his calves are phenomenal.



Lot 125



FEDDES BLOCKANA X101

Birth Date:
2/20/10

Reg. #
1368579

Category:
100% 1A

K2 INDEPENDENCE ALLI 807 57
K2 RED ALLIANCE 1602 73
ZCC SAGEBRUSH LADY 0602

GLACIER MARIAS 548
FEDDES BLOCKANA 307
FEDDES BLOCKANA 935

SITZ ALLIANCE 6595
SLCC 07H
KINCHEN SAGEBRUSH 873
7 Z SENSATION LASS 602
LCC HEAVEN OR BUST1000B
GLACIER REBALAS
LEACHMAN MONU 2X 8096
FED'S BLOCKANA 4225

HB	GM	CED	BW	WW	YW	M	ME	HPG	CEM	ST	MARB	YG	CW	REA	FAT
77	50	0	2.8	74	105	22	5	12	8	7	0.93	0.09	36	0.05	0

Bred to: **PIE ONE OF A KIND 510 (#3503311)**

Due Date: 4/5/18

X101 is a moderate-framed cow with lots of rib and depth with an excellent set of feet, legs and udder. The cows for three generations behind her are some of the deepest ribbed cattle we own.



Lot 126



FEDDES BLOCKANA 821

Birth Date: 1/21/08

Reg. # 1235131

Category: 100% 1A

5L NORSEMAN KING 2291
FEDDES KING 17S
FEDDES BLOCKANA 164

VGW KING OF THE WEST
NORSEMAN 1312 PJM

BUF CRK CHF 824-1658
FED'S BLOCKANA 5115

LONK CANYON REB K030
FEDDES BLOCKANA 408
FEDDES BLOCKANA 182

LCHMN GRANDCANYON 1244G
BTH MISS JR 107-556

HOLDEN HI HO 574
FEDDES BLOCKANA 899

HB	GM	CED	BW	WW	YW	M	ME	HPG	CEM	ST	MARB	YG	CW	REA	FAT
79	47	5	-0.8	50	76	31	4	9	3	9	0.14	-0.1	14	0.15	-0.03

Bred to: 5L ADVANTAGE 2170-165A (#1627167)

Due Date: 4/28/18

This coming 10-year-old cow has weaned eight calves with three daughters retained in our herd, and her 2017 calf is in the bull sale pen for 2018.



Lot 127



FEDDES BLOCKANA 8100

Birth Date: 2/9/08

Reg. # 1235144

Category: 100% 1A

VGW KING OF THE WEST
5L NORSEMAN KING 2291
NORSEMAN 1312 PJM

VGW ACE 613
VGW MT TABITHA 9633

376 P J M 141
P J M POWERPOINT 2009

LCHMN GRANDCANYON 1244G
FEDDES BLOCKANA 472
FEDDES BLOCKANA 899

BUF CRK CHF 824-1658
KRN REBA'S ROBIN

LARSON RED LIGHTNING
FED'S BLOCKANA 4231

HB	GM	CED	BW	WW	YW	M	ME	HPG	CEM	ST	MARB	YG	CW	REA	FAT
58	50	3	-0.8	52	83	32	2	13	-2	7	0.51	-0.18	18	0.51	-0.03

Bred to: PIE ONE OF A KIND 510 (#3503311)

Due Date: 2/6/18

This 10-year-old cow has a 103.4 MPPA on eight calves. She has two daughters in the herd and one in the replacement heifer pen. Notice her outstanding carcass traits.



Lot 128



FEDDES BLOCKANA 8103

Birth Date: 2/10/08

Reg. # 1235179

Category: 100% 1A

BIEBER MAKE MIMI 7249
FEDDES BIG SKY R9
FEDDES LAKINA 310

BJR MAKE MY DAY 981
BIEBER SIRENA 6708

LCHMN GRANDCANYON 1244G
FEDDES LAKINA 954

GLACIER CHATEAU 744
FEDDES BLOCKANA R82
FED'S BLOCKANA 4225

LMAN KING ROB 8621
GLACIER REBALA

BUF CRK HOBO 1961
BJR BLOCKANA 502-5185

HB	GM	CED	BW	WW	YW	M	ME	HPG	CEM	ST	MARB	YG	CW	REA	FAT
123	50	5	-3	55	82	28	6	15	3	13	0.47	-0.04	15	0.2	0

Bred to: 5L ADVANTAGE 2170-165A (#1627167)

Due Date: 3/13/18

This cow has an MPPA of 100 on eight head, with two daughters in our herd and her yearling heifer is one of the top Feddes bred heifers in this sale. Her 2017 bull calf had a 93 BR (72#) and 107 WR (728#). She's a granddaughter of 4225.

Bred Females

BIG SKY ELITE Female Sale



C-T BLOCKANA 4103

Birth Date:
2/18/14

Reg. #
1680675

Category:
100% 1A

5L HOBO DESIGN 273-7047
C-T MAKIN DESIGNS 1157
C-T TINA 0950

5L NORSEMAN KING 2291
C-T BLOCKANA 1033
CTDB BLOCKANA 810

5L DESTINATION 893-6215
5L ANALISE 1591-273
BIEBER MAKE MIMI 7249
C-T TINA 0726
VGW KING OF THE WEST
NORSEMAN 1312 PJM
GLACIER DIVIDE 310
FED'S BLOCKANA 4231

HB	GM	CED	BW	WW	YW	M	ME	HPG	CEM	ST	MARB	YG	CW	REA	FAT
86	49	7	-1.7	51	77	24	0	14	4	8	0.42	-0.12	13	0.24	-0.02

Bred to: **C-T EXCEPTIONAL 5015 (#3471517)**

Due Date: 2/1/18

A solid Makin Designs 4-year-old, stemming from the very maternal Blockana cow family and our popular C-T Blockana 810 donor cow.



GMRA ESTONIA 470

Birth Date:
1/29/14

Reg. #
1681523

Category:
100% 1A

GMRA EBV 266
GMRA MOUNTAIN 9287
GMRA VENICE 359

BROWN VACATION H7106
GMRA ESTONIA 086
GMRA ESTONIA 747

GMRA EBV 935
BJR ESTONIA 9S-1210
BASIN HOBO 79E
GMRA VENICE 146
BECKTON JULIAN GG B571
LCHMN FLOWER C1161
BIEBER MAKE MIMI 7249
GMRA ESTONIA 228

HB	GM	CED	BW	WW	YW	M	ME	HPG	CEM	ST	MARB	YG	CW	REA	FAT
141	49	5	0.5	55	87	29	7	12	4	16	0.5	-0.01	23	0.12	-0.01

Bred to: **FEDDES BOBCAT A230 (#1607674)**

Due Date: 3/18/18

Here is a great Mountain x Vacation combination, going back to EBV 266 who always raised such great females for us. She's doing a solid job with 75% of her numbers in the top half of the breed or higher.



GMRA Stetson 2240, sire



GMRA JUANA 476

Birth Date:
2/1/14

Reg. #
1681625

Category:
100% 1A

LJC MISSION STATEMENT P27
GMRA STETSON 2240
GMRA VENICE 359

BIEBER TOP MONEY 7948
GMRA JUANA 481
GMRA JUANA 130

LJC LANCER 806
LJC HANNAH 106
BASIN HOBO 79E
GMRA VENICE 146
BIEBER RED MOON 6042
BIEBER SIRENA 6708
LARSON RED LIGHTNING
GMRA JUANA 433

HB	GM	CED	BW	WW	YW	M	ME	HPG	CEM	ST	MARB	YG	CW	REA	FAT
121	47	3	-0.7	70	108	24	5	8	3	14	-0.15	0.09	33	0.17	0.02

Bred to: **FEDDES BOBCAT A230 (#1607674)**

Due Date: 4/30/18

Top-notch personal performance with WW, YW and CW in the top 12% of the breed or higher.



Lot 132



GMRA LOKOTA 010

Birth Date:
1/7/10

Reg. #
1367584

Category:
100% 1A

GLACIER CHATEAU 744
GMRA CITADEL 6109
GMRA NEXA 235

MLK CRK TITLEIST 4158
GMRA LOKOTA 836
GMRA LOKOTA 655

LMAN KING ROB 8621
GLACIER REBALA
LCHMN NO EQUAL 1174D
GMRA NEXA 531
VGW TITLEIST 1106
MLK CRK SHEBA 079
LCHMN RED SPREAD 1271F
GMRA LOKOTA 313

HB	GM	CED	BW	WW	YW	M	ME	HPG	CEM	ST	MARB	YG	CW	REA	FAT
83	48	3	0.3	66	103	22	17	8	6	9	0.25	0.11	32	0.08	0.02

Bred to: **FEDDES BOBCAT A230 (#1607674)**

Due Date: 3/24/18

Just look at the length and capacity combined with a great rear quarter in one incredibly smooth package. She posts both weaning and yearling EPDs in the top 16% of the breed and her 2017 heifer calf posted a 104 WR.



Lot 133



DKK WIND SONG 118

Birth Date:
2/1/11

Reg. #
1427237

Category:
100% 1A

MLK CRK CUB 722
RED CROWFOOT OLE'S OSCAR
RED CROWFOOT OMEGA 9179J

GLACIER CUB 446
MLK CRK LAKOTA 152-HOBO

RED PRICE 631
RED OMEGA 7456'

DKK PRIORITY R07
DKK WIND SONG 9033
DKK WIND SONG 937

LCC MAJOR LEAGUE A502M
DKK SASSINA M23

DKK POWER BALL 725
DKK WIND SONG 615

HB	GM	CED	BW	WW	YW	M	ME	HPG	CEM	ST	MARB	YG	CW	REA	FAT
82	50	0	-1.3	58	88	19	6	10	5	9	0.63	0.06	20	0.14	0.02

Bred to: **LOOSLI MANHATTAN 463 (#1714294)**

Due Date: 4/27/18

This mama cow has done an extremely good job for us! She is dark red, feminine and long! A rare Ole's Oscar female! Mated to Loosli Manhattan; I can imagine that her 2018 baby will be quite impressive. If she was not calving late – we would not let her go.



FEDDES BLOCKANA 7174 A48

Birth Date:
1/29/13

Reg. #
1607692

Category:
100% 1A

LJC MISSION STATEMENT P27
C-T GRAND STATEMENT 1025
C-T MISS PAN 0760

LJC LANCER 806
LJC HANNAH 106

LCHMN GRANDCANYON 1244G
CTDB HOBO'S GAL 803

SUNR GRAND CHEROKEE 909N
FEDDES BLOCKANA 7174
FEDDES BLOCKANA 182

BFCK CHEROKEE CNYN 4912
SUNR GRAND TILLY 006

HOLDEN HI HO 574
FEDDES BLOCKANA 899

HB	GM	CED	BW	WW	YW	M	ME	HPG	CEM	ST	MARB	YG	CW	REA	FAT
84	49	1	-0.2	63	93	22	-2	13	5	8	0.57	-0.02	25	0.32	0.01

Bred to: **PIE ONE OF A KIND 510 (#3503311)**

Due Date: 3/28/18

A48 is a young cow with a bright future, MA is top 18%, REA 14%. Her 2017 heifer calf by 165A ranks high in the heifer calves.



FEDDES SLEEK Z17

Birth Date:
1/21/12

Reg. #
1516349

Category:
100% 1A

RED CROWFOOT OLE'S OSCAR
C-T BIG OSCAR 1020
C-T COPPER QUEEN 0833

MLK CRK CUB 722
RED CROWFOOT OMEGA 9179J

FEDDES BIG SKY R9
C-T COPPERQUEEN 0645

BIEBER ROMERO 9136
FEDDES SLEEK 806
FEDDES SLEEK 2S

BUF CRK ROMEO L081
BIEBER MELLSSIE 8337

BIEBER MAKE MIMI 7249
FEDDES SLEEK 446

HB	GM	CED	BW	WW	YW	M	ME	HPG	CEM	ST	MARB	YG	CW	REA	FAT
123	51	10	-4.8	53	86	30	1	10	6	11	0.43	0	14	0.1	0.01

Bred to: **PIE ONE OF A KIND 510 (#3503311)**

Due Date: 3/25/18

Z17 combines C-T's Copper Queen cow family with the Sleek cow family. Her 2017 heifer calf by 165 sure looks like a keeper. HB 18%, GM 13%, CED 10%, BW 6%, Milk 5%.



FEDDES PALASS Y23 B52

Birth Date:
2/10/14

Reg. #
1687149

Category:
100% 1A

5L HOBO DESIGN 273-7047
C-T MAKIN DESIGNS 1157
C-T TINA 0950

5L DESTINATION 893-6215
5L ANALISE 1591-273

BIEBER MAKE MIMI 7249
C-T TINA 0726

FEDDES ATLAS 12S
FEDDES PALASS Y23
FEDDES PALASS 457

5L NORSEMAN KING 2291
FEDDES BLOCKANA 472

LCHMAN LITTLE JOHN 1509D
MPK PALASS 387

HB	GM	CED	BW	WW	YW	M	ME	HPG	CEM	ST	MARB	YG	CW	REA	FAT
61	49	0	-0.1	46	74	23	0	13	3	7	0.51	-0.1	14	0.2	-0.02

Bred to: **PIE ONE OF A KIND 510 (#3503311)**

Due Date: 2/26/18

B52 is a smaller framed cow sired by a Hobo Design son. Excellent carcass EPDs MA 26%, YG 11%, REA 28%.



Lot 137



C-T COPPER QUEEN 6037

Birth Date:
1/28/16

Reg. #
3535270

Category:
100% 1A

HXC CONQUEST 4405P
C-T THE QUEST 1103
C-T TINA 0972

C-T DKK DUKE 1100
C-T COPPER QUEEN 3035
C-T COPPER QUEEN 0833

BECKTON JULIAN GG B571
HXC ELLIE MAY MA638
5L NORSEMAN KING 2291
C-T TINA 0706
FRITZ JUSTICE 8013
GMRA ANGIE ROSE 944
FEDDES BIG SKY R9
C-T COPPERQUEEN 0645

HB	GM	CED	BW	WW	YW	M	ME	HPG	CEM	ST	MARB	YG	CW	REA	FAT
72	49	6	-2	54	80	26	2	10	0	8	0.44	-0.08	14	0.4	0.01

Bred to: **FEDDES EPIC C401 (#1742994)**

Due Date: 2/25/18

Don't miss this Copper Queen heifer. Sired by the great female-making C-T Quest 1103. She will make you stop and look with loads of volume in a moderate package. Dam is a nice-uddered C-T Duke 1100 cow. This heifer will stand out in your replacements.



Lot 138



C-T GWEN 6029

Birth Date:
1/25/16

Reg. #
3535289

Category:
100% 1A

BECKTON NEBULA P P707
BROWN JYJ REDEMPTION Y1334
JYJ MS JOLENE W16

VGW BASES LOADED 905
VF GWEN A156-832
LARSON GWEN 832-920

BECKTON NEBULA M045
BECKTON LANA M809 EP
LJC MISSION STATEMENT P27
HXC JOLENE R548
RED SSS OLY 554T
VGW WAR-SLICK 0786
5L VIKING 01-5675
LARSON GWENDOLYN 920

HB	GM	CED	BW	WW	YW	M	ME	HPG	CEM	ST	MARB	YG	CW	REA	FAT
142	53	9	-2.1	68	115	25	1	12	6	12	0.66	0	36	0.2	-0.01

Bred to: **FEDDES SAGA C299 (#3469550)**

Due Date: 4/2/18

Big Time Redemption heifer that will not go unnoticed. She has style with a beautiful phenotype, Great feet and leg structure all in a maternal package. Powerful growth with a 104 WR and 107 YR, top 18% WW, top 7% YW with a 9 CED in the top 17%. These equals calving ease X Growth. You won't go wrong with Redemption X Bases Loaded from the maternal Gwen cow family.





C-T Blockana 2023

DONOR



C-T Red Rock 5033



RUST MISS 424B

Birth Date:
2/19/14

Reg. #
1683983

Category:
100% 1A

ET Calf: C-T RED ROCK 5033 (#3471552) X
C-T BLOCKANA 2023 (#1512435)

Due Date: 7/3/18



EMBRYO PACKAGE

Selling 3 Embryos, guarantee 1 pregnancy.

ET Calf: C-T RED ROCK 5033 (#3471552) X
C-T BLOCKANA 2023 (#1512435)

Pregnant Recip

BROWN JYJ REDEMPTION Y1334

C-T RED ROCK 5033

C-T VERDI 1030

HXC CONQUEST 4405P

C-T BLOCKANA 2023

C-T BLOCKANA 1033

BECKTON NEBULA P P707
JYJ MS JOLINE W16

RED CROWFOOT OLE'S OSCAR
CTDB VERDI 904

BECKTON JULIAN GG B571
HXC ELLIE MAY MA638

5L NORSEMAN KING 2291
CTDB BLOCKANA 810

Projected EPDs:

HB	GM	CED	BW	WW	YW	M	ME	HPG	CEM	ST	MARB	YG	CW	REA	FAT
		13	-6.2	60	99	25	-2	8	3	11	0.48	-0.09	20	0.37	-0.00

C-T Blockana 2023 is fast becoming one of our top donor cows, producing a top herd bull, C-T Red Quest 4010 to Overmiller Red Angus and Ravishing Reds. She is the right kind of Conquest daughter with a feminine front end and lots of capacity, all with great feet and leg set. MPPA 101.7. C-T Red Rock is the new Genex upcoming young herd sire by Redemption and out of a solid Ole's Oscar cow. He has power with fluent movement and superior calving ease.



C-T Royal Duke 4090, sire



FEDDES BLOCKANA A51-D69

Birth Date:
2/7/16

Reg. #
3539779

Category:
100% 1A

C-T DKK DUKE 1100

C-T ROYAL DUKE 4090

C-T BLOCKANA 1042

HXC CONQUEST 4405P

FEDDES BLOCKANA X101 A51

FEDDES BLOCKANA X101

FRITZ JUSTICE 8013
GMRA ANGIE ROSE 944

BIEBER MAKE MIMI 7249
C-T BLOCKANA 0837

BECKTON JULIAN GG B571
HXC ELLIE MAY MA638

K2 RED ALLIANCE 1602 73
FEDDES BLOCKANA 307

HB	GM	CED	BW	WW	YW	M	ME	HPG	CEM	ST	MARB	YG	CW	REA	FAT
132	52	7	-2.2	73	113	24	5	10	6	13	0.66	0.07	33	0.23	0.02

Bred to: 5L INDEPENDENCE 560-298Y (#1450309)

Due Date: 1/16/18

This is probably the best set of bred heifers we have sold. This Royal Duke daughter is extremely well balanced. She is a Blockana on the top and bottom of the pedigree. Note the balanced sires with extra maternal traits: Make Mimi, B571, Conquest, Monu 2X, Hobo 1961.





Lot 142



CAH LARKABA 1613

Birth Date:
2/16/16

Reg. #
3581141

Category:
100% 1A

BECKTON JULIAN GG B571
HXC CONQUEST 4405P
HXC ELLIE MAY MA638

BKT JULIAN 7526 G
BKT MARTA 9A13 JL

BFCCK CHEROKEE CNYN 4912
HXC 529E

C-T GRAND STATEMENT 1025
CAH LARKABA 1401
RBH LARKABU 917

LJC MISSION STATEMENT P27
C-T MISS PAN 0760

FEDDES VERMILLION R13
FEDDES LARKABU 404

HB	GM	CED	BW	WW	YW	M	ME	HPG	CEM	ST	MARB	YG	CW	REA	FAT
100	50	8	-2.6	62	97	21	2	11	5	9	0.51	0.07	24	0	0

Bred to: **FEDDES LIBERTY D210 (#3539663)**

Due Date: 4/18/18

We purchased this female from Clay Hickie, who is a junior Red Angus member. Clay and his family are friends and cooperators. She is bred a little late for us, so here she is. She is a very nicely balanced Conquest daughter from the Feddes Larkaba family.



Lot 143



FEDDES LAKINA A59-D81

Birth Date:
2/12/16

Reg. #
3539795

Category:
100% 1A

HXC CONQUEST 4405P
FEDDES CONQUEST Y34
FEDDES BLOCKANA 429

BECKTON JULIAN GG B571
HXC ELLIE MAY MA638

FEDDES REBEL 011
FEDDES BLOCKANA 891

RED COCKBURN RIBEYE 308U
FEDDES LAKINA 310 A59
FEDDES LAKINA 310

RED BAR-E-L RIBEYE 103R
RED WILBAR CORA 443P

LCHMN GRANDCANYON 1244G
FEDDES LAKINA 954

HB	GM	CED	BW	WW	YW	M	ME	HPG	CEM	ST	MARB	YG	CW	REA	FAT
92	48	4	0.2	65	103	34	1	17	6	8	0.36	0.25	32	-0.3	0.03

Bred to: **5L INDEPENDENCE 560-298Y (#1450309)**

Due Date: 1/16/18

This is another high-performing female with BR 98, WR 108, YR 110. This Lakina 310 granddaughter combines B571, Conquest and Grand Canyon.



FEDDES BLOCKANA 4067-D204

Birth Date:
1/20/16

Reg. #
3539803

Category:
100% 1A

BECKTON NEBULA P P707
BROWN JYJ REDEMPTION Y1334
JYJ MS JOLENE W16

BECKTON NEBULA M045
BECKTON LANA M809 EP

LJC MISSION STATEMENT P27
HXC JOLENE R548

C-T THE QUEST 1103
C-T BLOCKANA 4067
C-T BLOCKANA 0635

HXC CONQUEST 4405P
C-T TINA 0972

MLK CRK FOUNDATION 110
CTDB BLOCKANA 810

HB	GM	CED	BW	WW	YW	M	ME	HPG	CEM	ST	MARB	YG	CW	REA	FAT
147	52	11	-3.1	65	110	26	0	11	7	13	0.61	0.07	31	0.02	-0.01

Bred to: **PIE ONE OF A KIND 510 (#3503311)**

Due Date: 1/20/18

This moderate-framed heifer is the first calf from 4067, C-T's 2014 Reno consignment. This heifer has an incredible EPD balance with 10 traits in the top 25% of the breed.



GMRA TOWKANA 542

Birth Date:
1/19/15

Reg. #
3467056

Category:
100% 1A

FRITZ JUSTICE 8013
GMRA PEACEMAKER 1216
GMRA THELMA 930

VGW JUSTICE 614
FRITZ CHRIS 6047

LJC MISSION STATEMENT P27
GMRA THELMA 319

GMRA TRILOGY 0226
GMRA TOWKANA 337
GMRA TOWKANA 570

MESSMER PACKER S008
GMRA LAKOTA 625

BIEBER MAKE MIMI 7249
GMRA TOWKANA 963

HB	GM	CED	BW	WW	YW	M	ME	HPG	CEM	ST	MARB	YG	CW	REA	FAT
162	51	9	-2.1	63	93	22	3	10	6	16	0.62	-0.11	22	0.44	-0.01

Bred to: **GMRA STETSON 2240 (#1525314)**

Due Date: 3/27/18

This Peacemaker daughter is smooth made and moderate framed with a strong EPD profile. She features 11 numbers in the top one-third of the breed or higher. She will be easy to breed!





GMRA THELMA 584

Birth Date:
2/3/15

Reg. #
3466927

Category:
100% 1A

BIEBER ROUGH RIDER 10712
BIEBER ROOSEVELT W384
BIEBER SHEBA 9602

LSF COMBINATION A301M
GMRA THELMA 831
GMRA THELMA 507

BASIN TREND SETTER 6074
BIEBER ADELLE 8958
C A FUTURE DIRECTION 5321
BIEBER SHEBA 5537
LCHMN TOP BRASS 1049H
WHF LASS 27G-29J
BIEBER MAKE MIMI 7249
GMRA THELMA 303

HB	GM	CED	BW	WW	YW	M	ME	HPG	CEM	ST	MARB	YG	CW	REA	FAT
87	49	2	0.1	64	98	15	1	14	5	9	0.42	0.14	29	0.1	0.04

Bred to: **FEDDES BOBCAT A230 (#1607674)**

Due Date: **3/18/18**

The maternal pedigree behind this cow is just absolutely impressive. She comes from a long line of Thelma cows that originated in the highly maternal Boot Jack herd. There are seven generations of MPPAs over 100 that go all the way back to 1984. This is a true herd-builder female!



DKK CARRIE 5132

Birth Date:
3/1/15

Reg. #
3486470

Category:
100% 1A

MESSMER PACKER S008
DKK POWER PACK 236
DKK MATTELINE 8014

BUF CRK THE RIGHT KIND U199
LASO CARRIE W178Z
BUF CRK CARRIE 3670

MESSMER JOSHUA 019P
MESSMER MILLIE 124P
BECKTON LANCER F442 T
DKK MATTELINE N01
BUF CRK LANCER R017
BUF CRK SHOSHONE R353
LMAN NONE BETTER 9604
BUF CR CARRIE VC1174

HB	GM	CED	BW	WW	YW	M	ME	HPG	CEM	ST	MARB	YG	CW	REA	FAT
105	50	12	-3.7	58	88	19	4	8	6	9	0.42	-0.04	17	0.22	0

Bred to: **DKK CAPTAIN JACK 6015 (#3533205)**

Due Date: **3/19/18**

A Genetic Gem – take a look at the loaded pedigree on this girl – Packer, Lancer F442, BJR JR 107, Rambo 502, Right Kind and None Better. DKK Carrie 5132 is a dark-red, moderate-framed young lady.



Lot 148



DKK DAZZLE 5126

Birth Date:
2/25/15

Reg. #
3486372

Category:
100% 1A

5L NORSEMAN KING 2291
DKK MAJESTY 362
DKK DIXIE 603

C-T THUNDERBIRD 0811
DKK DAZZLE 049
DKK DAZZLE N30

VGW KING OF THE WEST
NORSEMAN 1312 PJM
LCC CHEYENNE B221L
DKK DIXIE M04
4L 429 CANYON 37S
CTDB VRDALE 012
GLACIER CHATEAU 744
DKK DAZZLE 911

HB	GM	CED	BW	WW	YW	M	ME	HPG	CEM	ST	MARB	YG	CW	REA	FAT
66	49	5	-1.4	55	85	18	3	8	3	7	0.49	-0.03	18	0.3	0.01

Bred to: **DKK RUMBLE 6020 (#3533210)**

Due Date: **4/20/18**

This quiet-natured, dark-cherry-red female claims some of the best of both our Dixie and Dazzle cow families. Bred to DKK Rumble 6020, you will be able to add the great Wind Song cow family to her calf's heritage.



Andras New Direction R240, sire



C-T AMBER 5007

Birth Date:
1/19/15

Reg. #
3471491

Category:
100% 1A

ANDRAS IN FOCUS B152
ANDRAS NEW DIRECTION R240
ANDRAS KURUBA B111

BUF CRK LANCER R017
C-T AMBER 3055
BUF CRK AMBER 3912

MYTTY IN FOCUS
ANDRAS PINETA B91
MORGANS DIRECTION 111 9901
ANDRAS KURUBA B71
BECKTON LANCER F442 T
BUF CRK JULIET N036
RCN DYNAMO 732
BUF CRK AMBER 2594

HB	GM	CED	BW	WW	YW	M	ME	HPG	CEM	ST	MARB	YG	CW	REA	FAT
85	50	7	-2.2	71	108	24	0	11	4	7	0.48	0.15	30	-0.04	0.02

Bred to: **C-T GRAND KINGDOM 2065 (#1512408)**

Due Date: **3/25/18**

A nice 3-year-old Amber cow by the great female-making bull, New Direction. Her dam, C-T Amber 3055, was the Junior Calf Champion at Reno and 5007 holds the same phenotype. Great performance record with 110 WR and 106 YR, WW top 8%, YW top 11%.



Lot 150



C-T TINA 5048

Birth Date:
1/31/15

Reg. #
3471526

Category:
100% 1A

ANDRAS IN FOCUS B152
ANDRAS NEW DIRECTION R240
ANDRAS KURUBA B111

HXC CONQUEST 4405P

C-T TINA 2055

C-T TINA 0972

MYTTY IN FOCUS
ANDRAS PINETA B91

MORGANS DIRECTION 111 9901
ANDRAS KURUBA B71

BECKTON JULIAN GG B571
HXC ELLIE MAY MA638

5L NORSEMAN KING 2291
C-T TINA 0706

HB	GM	CED	BW	WW	YW	M	ME	HPG	CEM	ST	MARB	YG	CW	REA	FAT
71	51	6	-2.3	61	103	25	-2	11	4	6	0.49	0.1	29	0.12	0.02

Bred to: **C-T EXCEPTIONAL 5015 (#3471517)**

Due Date: 3/10/18

Don't miss this young and powerful Tina cow. She stands in the top 16% YW and to 11% Grid-Master. These Tina cows just keep coming to the top and 5048 won't disappoint you. She will make a big-time cross with this young herd sire, C-T Exceptional 5015.



Lot 151



GMRA ANGIE 551

Birth Date:
1/22/15

Reg. #
3467098

Category:
100% 1A

BECKTON EPIC R397 K
FEDDES BOBCAT A230
FEDDES LAKINA 91S

BIEBER MAKE MIMI 7249

GMRA ANGIE 442

GMRA ANGIE 800

BECKTON EPIC K F075
BECKTON KIT F468 JL

SUNR GRAND CHEROKEE 909N
FEDDES LAKINA 308

BJR MAKE MY DAY 981
BIEBER SIRENA 6708

GMRA HEAVY POWER 463
GMRA ANGIE 024

HB	GM	CED	BW	WW	YW	M	ME	HPG	CEM	ST	MARB	YG	CW	REA	FAT
99	51	3	1.1	65	108	23	1	10	1	11	0.65	0.01	36	0.25	0

Bred to: **GMRA TESLA 6214 (#3538390)**

Due Date: 4/1/18

Here is a beautiful Bobcat daughter, showcasing the smooth, sleek look and great structure of the Epic sire line. She has a breed-leading set of numbers with 75% of them in the top half of the breed with an emphasis on carcass.



**Red Angus heifers
topped every weight class at the
2017 Bighorn Classic Superior Livestock Sale
in Sheridan, Wyoming!**

No other cattle of any other breed are able to keep up with the kind of demand Red Angus heifers are bringing!



GMRA Tesla 6214, service sire



L83 GOLDIE 49C

Birth Date: 3/2/15

Reg. # 3480546

Category: 100% 1A

LSF SAGA 1040Y
PIE ENHANCER 337
PIE POLLY 124

BADLANDS TROUBADOUR 47Y
L83 GOLDIE 54A
L83 GOLDIE 010

BECKTON EPIC R397 K
LSF MINOLA T7172 W9041

PIE CODE RED 9058
PIE POLLY 922

HXC JACKHAMMER 8800U
BADLANDS RED CEDAR 311

RED SIX MILE TIDAL WAVE 254T
L83 GOLDIE 862

HB	GM	CED	BW	WW	YW	M	ME	HPG	CEM	ST	MARB	YG	CW	REA	FAT
114	51	0	1.1	74	125	16	-2	15	5	11	0.63	0.23	47	-0.09	0.02

Bred to: GMRA TESLA 6214 (#3538390)

Due Date: 3/18/18

We purchased this young gal at Lodoen L83's female sale last year and hate to see her go, but she just missed our final calving date. She'll be easy to breed with a solid set of numbers – nine are in the top one-third of the breed or higher. Highlights are growth with a WW, YW and CW all in single digits.



Lot 153



CK MELODY 5152

Birth Date: 3/17/15

Reg. # 3486512

Category: 100% 1A

RED VRRR TOP OVERLOAD 2T
VRRR LOAD KING A263
VRRR KARUBA 35W

LARSON RED LIGHTNING
DKK MELODY P42
DKK MELODY L54

RED BAR M R OVERLOAD 12R
RED SPAERMAN TOPSY 395H

DKK REVOLUTION R55
VRRR DUCHESS KARUBA

LMN IMPRESSIVE ROB1095B
LARSON CRIS 926

DKK POWER SURGE 708
DKK MELODY 531

HB	GM	CED	BW	WW	YW	M	ME	HPG	CEM	ST	MARB	YG	CW	REA	FAT
55	47	0	0.9	59	85	26	2	10	2	7	0.24	0	21	-0.06	-0.03

Bred to: DKK RED ROYAL 516 (#3486495)

Due Date: 3/17/18

Here is a beautiful 2-year-old with her whole life ahead of her. This Melody cow family is full of maternal – with really good milk production, great udders, fantastic mothering abilities, and are easy fleshing. This young lady's ruby-red color will really grab your attention. She will be a great new breeding piece for her new owner.



Lot 154



DKK HARMONY 560

Birth Date: 1/30/15

Reg. # 3486431

Category: 100% 1A

5L NORSEMAN KING 2291
DKK MAJESTY 362
DKK DIXIE 603

DKK ADDICTION N10
DKK HARMONY 636
DKK HARMONY 532

VGW KING OF THE WEST
NORSEMAN 1312 PJM

LCC CHEYENNE B221L
DKK DIXIE M04

BJR JR 107
DKK DIXIE 901

DKK BOZO 307
CK'S MISCHIEF 3126

HB	GM	CED	BW	WW	YW	M	ME	HPG	CEM	ST	MARB	YG	CW	REA	FAT
53	48	3	1.3	60	86	24	4	10	2	6	0.41	-0.02	23	0.27	0

Bred to: DKK CAPTAIN JACK 6015 (#3533205)

Due Date: 4/12/18

This young, high-capacity mama cow heralds the Harmony cow family – this cow family consistently produces excellent udders, dispositions and capacity. This young lady has her whole life ahead of her and will make her new owners a great addition to their herd.

Bred Females

BIG SKY ELITE Female Sale



DKK ST RENEE 592

Birth Date:
2/8/15

Reg. #
3486358

Category:
100% 1A

LJC MISSION STATEMENT P27
SILVEIRAS MISSION NEXUS 1378
SILVEIRAS DAORV 8399

DKK PRIORITY R07
DKK ST RENEE 2114
2RR G.R 606

LJC LANCER 806
LJC HANNAH 106
TROTTERS ROMEO 412
MOORE'S DAORV 5365
LCC MAJOR LEAGUE A502M
DKK SASSINA M23
BALLENSKY GOLDROBR 2046
LMB ST RENEE 167

HB	GM	CED	BW	WW	YW	M	ME	HPG	CEM	ST	MARB	YG	CW	REA	FAT
82	50	0	0.5	65	104	20	7	12	2	9	0.5	0.02	33	0.28	0

Bred to: **DKK RUMBLE 6020 (#3533210)**

Due Date: **3/12/18**

Performance and carcass minded – this young cow claims seven EPDs in the top one-third of the Red Angus breed. She has an excellent disposition and is a terrific mama.



FEDDES BLOCKANA Z202-D75

Birth Date:
2/9/16

Reg. #
3539756

Category:
100% 1A

BUF CRK THE RIGHT KIND U199
5L INDEPENDENCE 560-298Y
5L BLACK ADINA 525-560

C-T GRAND STATEMENT 1025
FEDS SOFIA 880 Z202
FEDDES BLOCKANA 880

BUF CRK LANCER R017
BUF CRK SHOSHONE R353
TC STOCKMAN 365
5L ADINA 293-525
LJC MISSION STATEMENT P27
C-T MISS PAN 0760
GLACIER DIVIDE 310
FED'S BLOCKANA 4231

HB	GM	CED	BW	WW	YW	M	ME	HPG	CEM	ST	MARB	YG	CW	REA	FAT
123	53	7	-1.1	71	118	21	-1	14	9	9	0.74	0.03	39	0.05	-0.03

Bred to: **FEDDES SILVER B90-D308 (#3539819)**

Due Date: **4/10/18**

This Independence heifer has more growth than most: WR 109, YR 109. She is so well balanced that the sire options on her are huge. She covers calving ease, growth, maternal and carcass.



Lot 157



FEDDES BLOCKANA A3-D37

Birth Date:
1/28/16

Reg. #
3539784

Category:
100% 1A

MESSMER PACKER S008
FEDDES CASCADE Z157
FEDDES LAKINA 87S

HXC CONQUEST 4405P
FEDDES BLOCKANA Y103 A3
FEDDES BLOCKANA Y103

MESSMER JOSHUA 019P
MESSMER MILLIE 124P
BIEBER MAKE MIMI 7249
FEDDES LAKINA 453
BECKTON JULIAN GG B571
HXC ELLIE MAY MA638
FEDDES ATLAS 12S
FEDDES BLOCKANA R42

HB	GM	CED	BW	WW	YW	M	ME	HPG	CEM	ST	MARB	YG	CW	REA	FAT
117	52	8	-0.8	70	104	21	3	10	-1	12	0.92	0	30	0.53	0.03

Bred to: **FEDDES LINCOLN Z79-B202 (#1687198)**

Due Date: **3/2/18**

D37 is a moderate-framed heifer that packs many of my favorite cows into here genes, 87S, R42, 8106, 5116, 106 and 453 are all cows that proved their value long after they were gone. This heifer has more growth than most Independence progeny.



FEDDES MISCHIEF Y1-D74

Birth Date:
2/9/16

Reg. #
3539702

Category:
100% 1A

HXC CONQUEST 4405P
FEDDES CONQUEST Y34
FEDDES BLOCKANA 429

C-T BIG CHIEF 0934
FEDDES MISCHIEF Y1
FEDDES MISCHIEF 31S

BECKTON JULIAN GG B571
HXC ELLIE MAY MA638
FEDDES REBEL 011
FEDDES BLOCKANA 891
FEDDES BIG SKY R9
C-T MISCHIEF 0765
5L NORSEMAN KING 2291
C-T MISCHIEF 316

HB	GM	CED	BW	WW	YW	M	ME	HPG	CEM	ST	MARB	YG	CW	REA	FAT
95	48	6	-1.8	56	95	27	4	13	3	10	-0.16	0.03	25	0.1	0

Bred to: **FEDDES SILVER BOW B226 (#1687147)**

Due Date: **2/10/18**

Her granddam was an awesome Grand Canyon daughter that raised a son going into a registered herd. Dam's MPPA 99.2 on six head.



FEDDES SLEEK B70-D27

Birth Date:
1/26/16

Reg. #
3539842

Category:
100% 1A

BECKTON NEBULA P P707
BROWN JYJ REDEMPTION Y1334
JYJ MS JOLENE W16

LOOSLI RIGHT KIND 107
FEDDES SLEEK 8116 B70
FEDDES SLEEK 8116

BECKTON NEBULA M045
BECKTON LANA M809 EP
LJC MISSION STATEMENT P27
HXC JOLENE R548
BUF CRK THE RIGHT KIND U199
MISS LL DESIGN 949
FEDDES BIG SKY R9
FEDDES SLEEK R33

HB	GM	CED	BW	WW	YW	M	ME	HPG	CEM	ST	MARB	YG	CW	REA	FAT
150	53	10	-2.9	70	111	27	-2	14	7	12	0.73	0.01	32	0.21	-0.01

Bred to: **5L INDEPENDENCE 560-298Y (#1450309)**

Due Date: **2/4/18**

This heifer has an elite set of numbers with amazing balance. There's a large number of bulls that would complement her. Her dam's maternal sister just won the Futurity Show and was the high seller at the 2017 NILE.





Lot 160



C-T TINA 6133

Birth Date:
3/7/16

Reg. #
3535259

Category:
100% 1A

C-T GRAND STATEMENT 1025
FEDDES STATMENT A509
RBH FAYETTE 809

HXC CONQUEST 4405P

C-T TINA 2055

C-T TINA 0972

LJC MISSION STATEMENT P27
C-T MISS PAN 0760

CFLD REBELLAS ROBINHOOD
FED'S FAYETTE 608

BECKTON JULIAN GG B571
HXC ELLIE MAY MA638

5L NORSEMAN KING 2291
C-T TINA 0706

HB	GM	CED	BW	WW	YW	M	ME	HPG	CEM	ST	MARB	YG	CW	REA	FAT
87	51	8	-3.3	53	89	23	3	12	5	7	0.45	0.01	18	0.06	0

Bred to: **C-T RED ROCK 5033 (#3471552)**

Due Date: 1/20/18

Extremely attractive Statement daughter from the maternal Tina cow family. These Tina cows have been big producers and 6133's dam is a full sister to C-T Quest 1103 selling to 5L Red Angus. Don't miss this cross with the great C-T Red Rock 5033 bull, standing at Genex.



C-T Verdale 5011

DONOR



PIE One Of A Kind 510



C-T VERDI 4017

Birth Date:
1/24/14

Reg. #
1680630

Category:
100% 1A

ET Calf: **PIE ONE OF A KIND 510 (#3503311) X**
C-T VERDALE 5011 (#3471490)

Pregnant Recip

Due Date: 7/3/18



EMBRYO PACKAGE

Selling 3 Embryos, guarantee 1 pregnancy.

ET Calf: **PIE ONE OF A KIND 510 (#3503311) X**
C-T VERDALE 5011 (#3471490)

PIE ONE OF A KIND 352
PIE ONE OF A KIND 510
GEF CUTTING QUEEN 354A

BROWN JYJ REDEMPTION Y1334

C-T VERDALE 5011

C-T VRDALE 3039

BUF CRK THE RIGHT KIND U199
PIE FAYETTE 1160

HAYCOW CUTTING EDGE 055
GEF TRUE QUEEN 55X

BECKTON NEBULA P P707
JYJ MS JOLENE W16

HXC CONQUEST 4405P
C-T VRDALE 1183

Projected EPDs:

HB	GM	CED	BW	WW	YW	M	ME	HPG	CEM	ST	MARB	YG	CW	REA	FAT
		11	-2.9	75	119	25	1	13	6	12	0.42	0.07	36	0.13	0.00

Our young new donor cow, C-T Verdale 5011, has started out with a bang on her first try, raising a big-time Independence bull with a 73 lb. BW, 827 WW and 110 WR. C-T Verdale 5011 has an extremely maternal pedigree (Redemption x Conquest) with a phenotype and udder structure that we all strive for. MPPA 104. This will be exciting cross with One of a Kind 510, our upcoming young herd sire from Pieper Red Angus, owned with Feddes, Klompier and Rocking Bar H Red Angus. He has tremendous power and fluent movement, all with a great disposition.



Lot 163



GMRA MESA MAID 687

Birth Date:
2/1/16

Reg. #
3538379

Category:
100% 1A

5L ADVANTAGE 3267-221Y
5L TOP FLIGHT 3010-491A
5L OSCE 2948-3010

BUF CRK THE RIGHT KIND U199
5L ADINA 195-3267

5L DOUBLE BLAZE 1134-8576
5L OCSE 233-2948

BIEBER MAKE MIMI 7249
GMRA MESA MAID 425
GMRA SA MESA MAID 054

BJR MAKE MY DAY 981
BIEBER SIRENA 6708

LCHMN RED SPREAD 1271F
GMRA MESA MAID 321

HB	GM	CED	BW	WW	YW	M	ME	HPG	CEM	ST	MARB	YG	CW	REA	FAT
92	49	5	0	72	107	18	1	10	4	9	0.36	0.06	33	0.11	0

Bred to: **FEDDES BRUNSWICK D202 (#3539689)**

Due Date: 3/3/18

It's so easy to look at these bred heifer pictures and see all the potential that awaits. This Top Flight daughter is out of a great Make Mimi, who stayed in the GMRA herd her entire productive life, producing 11 calves for us with an MPPA of 101.8, with all calves being retained at weaning for replacements or going in the bull sale. Here is a potential foundation female.



Lot 164



GMRA PEACHA 6111

Birth Date:
2/15/16

Reg. #
3538462

Category:
100% 1A

GMRA PEACEMAKER 1216
GMRA TRIGGER 4248
GMRA LAKOTA 149

FRITZ JUSTICE 8013
GMRA THELMA 930

BASIN HOB0 79E
GMRA LAKOTA 314

LJC MISSION STATEMENT P27
GMRA PEACHA 808
GMRA PEACHA 637

LJC LANCER 806
LJC HANNAH 106

FCC RAMBO 502
GMRA PEACHA 95

HB	GM	CED	BW	WW	YW	M	ME	HPG	CEM	ST	MARB	YG	CW	REA	FAT
97	48	3	3.1	72	115	23	9	4	6	12	0.44	0.22	43	-0.22	0.01

Bred to: **FEDDES BRUNSWICK D202 (#3539689)**

Due Date: 3/21/18

Her sire was a feature in our 2015 sale, selling to Lucht Red Angus for \$22,000. She is built with all the depth and capacity you see here, combined with a sound structure. She is out of a dam with an MPPA of 102.6 on five calves. The Brunswick calf on board should be a powerhouse, with over half of the projected EPDs in the top 30% of the breed or higher.



Lot 165



DKK MATTELINE 6147

Birth Date:
2/21/16

Reg. #
3533328

Category:
100% 1A

C-T DKK DUKE 1100
DKK CAPTAIN 434
DKK RAMBLIN RUBY 028

FRITZ JUSTICE 8013
GMRA ANGIE ROSE 944

RED FINE LINE MULBERRY 26P
DKK RAMBLIN RUBY 601

5L NORSEMAN KING 2291
DKK MATTELINE 104
DKK MATTELINE 8033

VGW KING OF THE WEST
NORSEMAN 1312 PJM

C-T WILDFIRE 0515
DKK MATTELINE P10

HB	GM	CED	BW	WW	YW	M	ME	HPG	CEM	ST	MARB	YG	CW	REA	FAT
98	50	6	-2.7	50	84	29	1	11	5	9	0.45	-0.01	17	0.38	0.03

Bred to: **FRITZ AMBUSH 12D (#3543988)**

Due Date: 3/12/18

Soft-made and classy, DKK Matteline 6147 is moderate framed with a broody body type — she has a look of a great mama cow.



Lot 166



CK CHRIS 6165

Birth Date:
3/5/16

Reg. #
3533346

Category:
100% 1A

BROWN JYJ REDEMPTION Y1334
DKK C-T REDEEM 402
BROWN MS ABIGRACE Z7908

BECKTON EPIC R397 K
C-T CHRIS 4102
C-T CHRIS 426

BECKTON NEBULA P P707
JYJ MS JOLENE W16
LCS X2
BROWN MS ABIGRACE L7730
BECKTON EPIC K F075
BECKTON KIT F468 JL
FCC RAMBO 502
LARSON CRIS 926

HB	GM	CED	BW	WW	YW	M	ME	HPG	CEM	ST	MARB	YG	CW	REA	FAT
124	51	8	-1.8	66	104	24	-5	13	6	10	0.62	0.02	29	0.18	-0.01

Bred to: **LOOSLI RIGHT ON 423 (#1714264)**

Due Date: 1/27/18

Look at the pedigree on this heifer. On the top side she goes back to Brown Redemption and the great Brown Abigrace cow. And on the bottom side, back to the gorgeous C-T Chris 426 cow. With 10 EPDs in the top 30%, you can't go wrong with this bred heifer with a heart-stopping pedigree. She is ultra-sounded safe in calf with a Loosli Right On heifer calf inside.



Taryn DeBoer



C-T MISS PAN 6013

Birth Date:
1/22/16

Reg. #
3535296

Category:
100% 1A

BROWN JYJ REDEMPTION Y1334
DKK C-T REDEEM 402
BROWN MS ABIGRACE Z7908

C-T GRAND STATEMENT 1025
C-T MISS PAN 4023
C-T MISS PAN 1044

BECKTON NEBULA P P707
JYJ MS JOLENE W16
LCS X2
BROWN MS ABIGRACE L7730
LJC MISSION STATEMENT P27
C-T MISS PAN 0760
5L NORSEMAN KING 2291
C-T MISS PAN 0627

HB	GM	CED	BW	WW	YW	M	ME	HPG	CEM	ST	MARB	YG	CW	REA	FAT
108	52	8	-1.7	64	103	24	1	12	6	9	0.71	0.01	29	0.11	-0.01

Bred to: **FEDDES EPIC C401 (#1742994)**

Due Date: 4/20/18

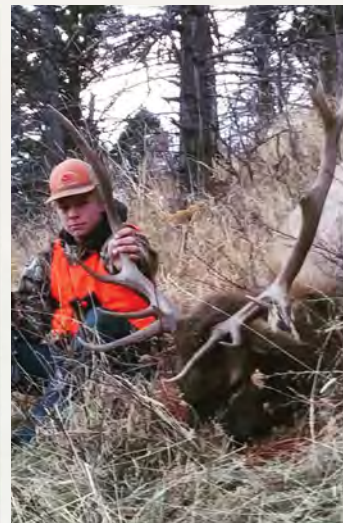
Nice Redeem daughter with a powerful Grand Statement mother to back her up. Solid EPDs with GM top 12%, Marb top 11%.



Craig DeBoer



Traig DeBoer



Cayl DeBoer



Trac DeBoer

Big Sky Elite Female Sale
Bob & Julie Morton
2435 Logan Trident Road
Three Forks, MT 59752

FIRST CLASS
US POSTAGE
PAID
MONTEZUMA, IA
PERMIT #30

**TIME-DATED MATERIAL
DO NOT DELAY!**

BIG SKY ELITE

GREEN MOUNTAIN RED ANGUS • C-T RED ANGUS
FEDDES RED ANGUS • KLOMPIEN RED ANGUS

Female Sale

Wednesday,
December 6, 2017

Lunch at noon • Sale at 1 p.m. MST
Green Mountain Red Angus • Logan, MT

